

# Roose + Partners

## Casualty Newsletter 127

3rd September 2015

### FEATURE CASUALTY

## CS Jaden/Paros Wind

*CS Jaden* - Bulk carrier, IMO 9660061, Built 2012, 38,101 dwt

*Paros Wind* - Combined chemical and oil tanker, IMO 8517059, Built 1998, 17,060 dwt

**Date of Casualty** 31 August 2015

**Voyage** Taman, Russia to Port Said, Egypt / Tuapse, Russia to Durres, Albania

**Cargo** Wheat / Fuel oil

**Type of Casualty** Collision

**Type of Claim** Collision damage claim

**P&I** Gard / London Club

In the late evening at 2330 hours on 31 August 2015 the combined chemical and oil tanker *Paros Wind*, which was on a voyage from Tuapse in Russia to Durres in Albania loaded with a cargo of 12,732 m/t of fuel oil, was in collision with the *CS Jaden*, a bulk carrier which was heading for Port Said, Egypt and possibly then on to Mombasa laden with a cargo of 36,000 m/t of wheat. The collision took place in the Black Sea eight miles from the Northern entrance to the Bosphorus Strait. It is reported that the collision occurred when

the *Paros Wind* attempted to overtake the *CS Jaden*. Click [here](#) for video track of the collision.

Both vessels suffered structural damage. The *CS Jaden* is reported to have a breach in her cargo holds Nos. 1 & 2 and damage to her ballast tanks and was taking on water albeit she was said to be in a stable condition. The *Paros Wind* sustained damage to her starboard bow, forecastle deck with heavy deformation and holes all above the waterline. There are no reports of any injuries to the crews of either vessel.

Coastal Safety tugs, their fast rescue boats and technical teams initially attended at the site of the collision and both vessels were subsequently towed to an anchorage just off Kumkoy, north of Istanbul, where they anchored for inspection. Class, State, H&M and P&I surveyors are all in attendance. The tug *Kurtama 10* was also tasked to stand by.



### NEW CASUALTIES

#### Mineral Faith

Bulk carrier, IMO 9575668, Built 2012, 175,620 dwt

**Date of Casualty** 25 August 2015 - Late Notification

**Voyage** Narvik, Norway to Abu Dhabi, UAE

**Cargo** Iron ore

**Type of Casualty** Grounding in the Suez Canal. The vessel was refloated by SCA tugs and anchored for inspection on 31 August. It is the first grounding since the new section of the waterway opened.

**Type of Claim** Possible hull damage, salvage claim and/or General Average declaration

**P&I** Gard

#### Ms Kerci

Supply vessel, IMO 8968179, Built 2001, 96 gt

**Date of Casualty** 26 August 2015

**Type of Casualty** A natural gas pipeline ruptured about 25 miles south of Marsh Island causing a fire and injuring two crew members.

**Type of Claim** Fire damage and crew claims

#### MSC Ajaccio

Fully cellular containership, IMO 9605267, Built 2014, 112,230 dwt

**Date of Casualty** 26 August 2015

**Voyage** Las Palmas, Canary Islands to Rotterdam, Netherlands

**Cargo** General containerised cargo

**Type of Casualty** Disabled off the Spanish Coast. Spanish salvors



Salvamento Marítimo were requested to assist and the vessel was towed by tug *Don Inda* and assisted by tugs *Ibaizabal Nueve* and *Sertosa Veintiocho* into La Corunna.

**Type of Claim** Possible salvage type claim and/or General Average declaration

**P&I** Swedish Club



#### Mys Elizavety

Fish factory, IMO 7717016, Built 1978, 1,376 dwt

**Date of Casualty** 27 August 2015

**Type of Casualty** Fire in the fish processing workshop whilst at Sovetskaya Gavan Port. The vessel was towed to Byaude Bay about a mile from port where the fire was extinguished by tugs.

**Type of Claim** Fire damage claim

#### Green Egersund

Reefer, IMO 8804567, Built 1990, 6,120 dwt

**Date of Casualty** 27 August 2015

**Voyage** Dakar, Senegal to Gdynia, Poland

**Cargo** Reefer cargo

**Type of Casualty** Allided with a floating dock at the Naval Shipyard in Gdynia breaching the hull and leading to a leak of oil.

**Type of Claim** Allision damage claim  
**P&I** Skuld

#### Voorwaarts Voorwaarts

Passenger sailing ship, No other details

**Date of Casualty** 27 August 2015

**Type of Casualty** Allision with the Noorder bridge in Leeuwarden causing damage to the vessel's masts and injuries to the Master. The vessel returned to Groningen where the masts will be removed. She will be repaired later this year.

**Type of Claim** Allision damage claim

#### Eminence

Cement carrier, IMO 9152492, Built 1997, 20,872 dwt

**Date of Casualty** 28 August 2015

**Voyage** Nghi Son to Ho Chi Minh City, Vietnam

**Cargo** Cement

**Type of Casualty** Ran aground off Dong Thap, Vietnam.

**Type of Claim** Possible hull damage and salvage claim

**P&I** Japan Shipowners

#### Nathalie

General cargo vessel, IMO 8505939, Built 1985, 1,529 dwt

**Date of Casualty** 28 August 2015

**Voyage** Antwerp to Ghent, Belgium

**Cargo** No details

**Type of Casualty** Ran aground at Bath in South Beveland on the Wester Scheldt. The vessel was refloated with tug assistance.

**Type of Claim** Possible hull damage and salvage claim

Further casualties overleaf



#### Alula

Containership, IMO 9525883, Built 2012, 145,528 dwt

**Date of Casualty** 28 August 2015

**Voyage** Rotterdam, Netherlands to Hamburg, Germany

**Cargo** General containerised cargo

**Type of Casualty** Fire in a container carrying pressed cardboard whilst at the Eurogate Terminal in Hamburg. Thirty containers had to be unloaded to get access to the container.

**Type of Claim** Fire damage claim

**P&I** Standard Club

#### Seaspan 183

Barge, No other details

**Date of Casualty** 28 August 2015

**Voyage** No details

**Cargo** Scrap cars

**Type of Casualty** Capsized and lost her





# Roose + Partners

## NEW CASUALTIES - Continued - edition 127

100 cars in Victoria's inner harbour. All fuel had been removed from the vehicles but there is some pollution residue.

**Type of Claim** Wreck removal and clean-up operations

### Yu Jin Ho

Tanker, Built 1989, 2,780 dwt

**Date of Casualty** 28 August 2015

**Voyage** Gwangyang to Pyeongtaek Port, South Korea

**Cargo** 900 m<sup>3</sup> of fuel oil

**Type of Casualty** Ran aground in Pyeongtaek Port, South Korea. The vessel was refloated with a tug at high tide.

**Type of Claim** Possible hull damage, salvage claim and/or General Average declaration

### Okskiy-62

General cargo vessel, Built 1981

**Date of Casualty** 29 August 2015

**Voyage** Rop-Ruchey to Murzha, Russia

**Cargo** 1,985 m<sup>3</sup> of building materials

**Type of Casualty** Ran aground on the river Volga. A tug attended to assist.

**Type of Claim** Possible salvage type claim

### Erin Wood/Daroja

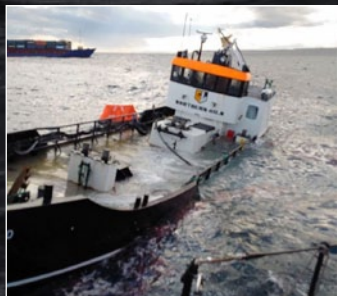
*Erin Wood* - Fueling vessel, No other details  
*Daroja* - General cargo vessel with container capacity, IMO 9148221, Built 1997, 4,155 dwt

**Date of Casualty** 29 August 2015

**Voyage** Tyne to Scrabster, UK / Aberdeen to Lerwick, UK

**Cargo** 130,000 litres of marine diesel /

**Type of Casualty** Collision off Peterhead, Aberdeen. The *Erin Wood* was holed and had to be towed into Peterhead. The



MAIB are conducting an investigation into the collision.

**Type of Claim** Collision damage claim

**P&I** n/a / Lodestar Marine

### Kyra Panaghia

Bulk carrier, IMO 9647277, Built 2012, 63,500 dwt

**Date of Casualty** 29 August 2015

**Voyage** San Lorenzo, Argentina to Ilychevsk, Ukraine

**Cargo** No details

**Type of Casualty** Engine failure in the Black Sea about 70 mm North East of the Bosphorus.

**Type of Claim** Possible salvage claim and/or General Average declaration

**P&I** West of England

### Kizlyar

General cargo vessel, Built 1964, 2,129 dwt

**Date of Casualty** 29 August 2015

**Voyage** Rostov to Berezniiki, Russia

**Cargo** 1,770 m<sup>3</sup> of mineral concentrates

**Type of Casualty** Grounding on the River Kama. The vessel was refloated with the assistance of tugs.

**Type of Claim** Possible salvage type claim



### Mareno

Containership, IMO 9175717, Built 2000, 17,500 dwt

**Date of Casualty** 30 August 2015

**Voyage** Walvis Bay, Namibia to Cape Town, South Africa

**Cargo** General containerised cargo

**Type of Casualty** Fire in deck containers. The vessel called at Luderitz, Namibia so that the fire could be extinguished and the affected containers removed.

**Type of Claim** Fire damage claim and possible General Average declaration

**P&I** Gard

### Thai Binh Bay/Marine 1

Thai Binh Bay - General cargo vessel, IMO 9573309, Built 2010, 12,843 dwt

Marine 1 - Ro-ro, IMO 9039559, Built 1992, 5,260 dwt

**Date of Casualty** 30 August 2015

**Voyage** Port Klang, Malaysia to Chittagong, Bangladesh

**Cargo** No details

**Type of Casualty** The *Thai Binh Bay* was discharging its cargo at Chittagong when it was struck by the ro-ro which was being beached for demolition. Both vessels were damaged.

**Type of Claim** Collision damage claim

**P&I** West of England / None

### Sinn

Self-propelled barge, 1,935 dwt

**Date of Casualty** 30 August 2015

**Voyage** No details

**Cargo** No details

**Type of Casualty** Ran aground on a gravel bar on the Danube near Straubing-Hofstetten.

**Type of Claim** Possible hull damage and salvage claim

### Nordic Hong Kong

Fully cellular containership, IMO 9509152, Built 2013, 46,580 dr

**Date of Casualty** 30 August 2015

**Voyage** Port Mohammed Bin Qasim, Pakistan to Salalah, Oman

**Cargo** General containerised cargo

**Type of Casualty** Ran aground whilst leaving Port Qasim. The vessel was refloated with tug assistance and has since proceeded.

**Type of Claim** Possible hull damage and General Average declaration

**P&I** Skuld

### Hansa Magdeburg

Fully cellular containership, IMO 9256377, Built 2003, 23,454 dwt

**Date of Casualty** 2 September 2015

**Voyage** Qingdao, China to Busan, South Korea

**Cargo** General containerised cargo

**Type of Casualty** Suspected of being in collision with an unnamed fishing vessel north of Jeju Island. The fishing vessel is thought to have sunk.

**Type of Claim** Collision damage claim.

**P&I** Hanseatic



### Liverpool Seaways

Passenger ro-ro, IMO 9136034, Built 1997, 7,115 dwt

**Date of Casualty** 2 September 2015

**Type of Casualty** Allided with a pontoon on its way into Kapellskär port during poor weather. The ferry suffered a seven metre breach and an excavator on the pontoon was damaged.

**Type of Claim** Allision damage claim

**P&I** West of England

### Okskiy 37

Tug, Built 1973, 2,129 dwt

**Date of Casualty** 2 September 2015

**Voyage** Yumatihra to Naberezhnye Chelny, Russia

**Cargo** Aluminium oxide

**Type of Casualty** In collision with a fishing vessel which sank with the loss of one crew member.

**Type of Claim** Collision and loss of life claims



### Meratus Banjar 2

Fully cellular containership, IMO 9163556, Built 1997, 7,734 dwt

**Date of Casualty** 2 September 2015

**Voyage** Surabaya to Makasaar, Indonesia

**Cargo** General containerised cargo

**Type of Casualty** Suffered water ingress and sank off Surabaya.

**Type of Claim** Total loss claim

**P&I** Shipowners



### Topkapi/Kaunas Seaways

*Topkapi* - Ro-ro, IMO 7022837, Built 1970, 1,077 gt

*Kaunas Seaways* - Passenger ro-ro, IMO 8311924, Built 1989, 7,664 dwt

**Date of Casualty** 2 September 2015

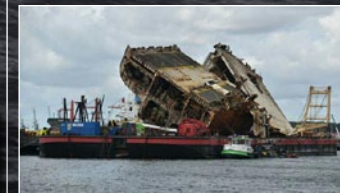
**Type of Casualty** Collision following engine failure at Haydarpasa port. The *Topkapi* struck the *Kaunas Seaways* and the anchor cable became entangled. Coastal Safety tugs are in attendance.

**Type of Claim** Collision damage claim

**P&I** RaetsMarine / West of England

Access all our previous casualty newsletters here

## CASUALTY FOLLOW-UP



**Baltic Ace** - Prior to issues & edition 49 - the further sections of the car carrier arrived in the Waal Port of Rotterdam on 26 August aboard Smit Barge 2 which was towed by the tugs Viking and Smit Bronco.

**Orkim Harmony** - editions 116 & 117 - the Indonesian Navy have arrested the man they believe to be responsible for the hijacking drama of the Malaysian-flagged vessel.

**Norman Atlantic** - editions 92, 93, 109 & 104 - the investigation into the cause of the fire aboard the ferry has been extended another six months. The fire led to 11 confirmed deaths with a further 18 missing.

## LOF NEWS

### Pebble Beach

Bulk carrier, IMO 9595979, Built 2013, 37,003 dwt

**Date of Casualty** 26 August 2015

**Voyage** Rio Grande to Porto Alegre

**Cargo** No details

**Type of Casualty** Ran aground entering Lago Guaiba whilst under control of a local pilot. The vessel was refloated with the assistance of local tugs subcontracted under an LOF Salvage Agreement with Greek salvor's Five Oceans Salvage.

**Type of Claim** Possible hull damage, salvage claim and/or General Average declaration

**P&I** Gard



**Bulk Jupiter** - edition 93 - the Bahamas Maritime Authority has published its report into the sinking of the bulk carrier off Vietnam on 2 January 2015. They have concluded that the normally dry bauxite cargo was so humid that it was floating and made the ship unstable. They believe high fluid levels in the load changed the initially dry character of the load and it liquefied causing the ship to heel so much that it capsized.

**Costa Mediterranea** - edition 126 - was able to resume her voyage on 26 August after the floating crane Teg 25 assisted by the tug Vruijica secured the crashed tender back in position.

