

FEATURE CASUALTY

Flinterstar/Al-Oraiq

Flinterstar – General cargo vessel with container capacity, IMO 9243758, Built 2002, 8,850 dwt

Al-Oraiq – LNG tanker, IMO 9360790, Built 2008, 122,079 dwt

Date of Casualty 6 October 2015

Voyage Antwerp, Belgium to Bilbao, Spain / Ras Laffan, Qatar to Zeebrugge, Belgium

Cargo Steel / Marsh gas

Type of Casualty Collision

Type of Claim Collision damage claim

P&I QBE / Japan Shipowners

On Tuesday morning at 0400 hours the general cargo vessel *Flinterstar* was in collision with the Marshall Islands-flagged LNG carrier *Al-Oraiq* in the North Sea off Belgium, 6 miles from the port of Zeebrugge. The *Flinterstar*, which was proceeding from Antwerp for Bilbao, was loaded with crane components, steel and iron and had 427 m³ of heavy-fuel and 135 m³ of gasoil on board. The collision caused significant damage to the stern of the smaller vessel, rupturing the *Flinterstar's* fuel tanks and leading to a loss of heavy fuel oil into the sea. The vessel began to sink and her crew of 11 were forced to jump into the oily waters becoming covered in the oil which had escaped from the bunker tanks. They were all safely rescued by tugs which were operating in the area. The crew of the LNG tanker also rescued 3 men. The Master had to be hospitalised suffering from hypothermia.

Traffic on the Western Scheldt was halted in the aftermath of the

collision but resumed at 0700 hours. Flinter, the owners and operators of the *Flinterstar* which has an estimated value of Eur14million, immediately sought the assistance of Smit Salvage, Multiship and URS, all of whom operate locally and the vessel, which was only partially sunk, was brought to rest on a sandbank in the Western Scheldt estuary where she has been secured with anchors. She is reported to be stable although she is listing to port side and her cranes, bow and superstructure are still visible above water. It is possible the salvage assistance may be provided under an LOF Salvage Contract with SCOPIC incorporated and invoked although a decision on this has yet to be taken. Two oil slicks were noted and late yesterday the Belgian authorities began constructing a sand dam in order to protect the nature reserve Zwin and the local beaches from any ensuing pollution. An aerial inspection will be completed today to assess the movement of the oil.

The *Al-Oraiq*, which was proceeding to Zeebrugge, was slightly damaged, suffering a small leak. She was towed to Zeebrugge where she berthed shortly after 0800 hours. Her owner K-Line LNG Shipping (UK) Limited reported that all her crew were safe and that there was no damage to her cargo tanks although they had nevertheless mobilised their emergency response team. Investigations are underway into the cause of the collision. Both vessels had pilots on board at the time. A track of collision has already been uploaded on YouTube and can be viewed by clicking [here](#).

NEW CASUALTIES



Vladimir Brodyuk ▣

Fishing factory, IMO 8116295, Built 1982, 1,796 dwt

Date of Casualty 29 September 2015
– Late Notification

Type of Casualty Disabled. Reefer *Kapitan Kirichenko* responded and towed the vessel to Petropavlovsk-Kamchatskiy.

Type of Claim Possible salvage type claim

P&I Hanseatic

Lena J.

General cargo vessel with container capacity, IMO 9147693, Built 1998, 9,928 dwt

Date of Casualty 30 September 2015

Voyage Montreal to Colborne, Canada

Cargo No details

Type of Casualty Allided with a bridge in Port Colborne. Both suffered damage. Navigation on the Welland Canal was suspended for an inspection of the bridge structure.

Type of Claim Allision damage claim

P&I North of England

Cosmos

Ferry, IMO 7375911, Built 1990, 220 dwt

Date of Casualty 30 September 2015

Type of Casualty Sinking whilst under tow from Incheon to Manila. 12 of the 13 crew were unharmed but one was reported dead.

Type of Claim Total loss and loss of life claims

Grona Aalsum/Kosterberg/Prince of Seas ▣

Grona Aalsum - General cargo vessel with container capacity, IMO

9551662, Built 2010, 5,134 dwt

Kosterberg - Product tanker, IMO 9184677, Built 1998, 3,271 dwt

Prince of Seas - Reefer, IMO 9014444, Built 1993, 7,387 dwt

Date of Casualty 30 September 2015

Voyage Tornio, Finland to Flushing, Netherlands / Bremerhaven, Germany to Aarhus, Denmark / St Petersburg, Russia to Flushing, Netherlands

Cargo No details

Type of Casualty Collision on the Kiel Canal during dense fog. The *Kosterberg* was pushed into the embankment and destroyed several dolphins. All the vessels were able to proceed.

Type of Claim Collision/Allision damage claim

P&I Britannia / Skuld / Skuld



El Faro ▣

Ro-ro/containership, IMO 7395351, Built 1975, 14,971 dwt

Date of Casualty 1 October 2015

Voyage Jacksonville, USA to San Juan, Puerto Rico

Cargo General containerised cargo

Type of Casualty Sinking during hurricane Joaquin near Crooked Island, Bahamas with the loss of all 33 crew. Responders have found one body and debris including a heavily damaged life boat and



container shells.

Type of Claim Total loss and loss of life claims

P&I Steamship Mutual



CV24 - LMAX ▣

Clipper Racing yacht, Built 2013

Date of Casualty 1 October 2015

Type of Casualty Ran aground near Rio de Janeiro, Brazil. The yacht was refloated on 4 October and is undergoing repairs.

Type of Claim Possible damage and salvage type claim

Minouche

General cargo vessel with container capacity, IMO 7930553, Built 1980, 1,525 dwt

Date of Casualty 1 October 2015

Voyage Miami, USA to Port de Paix, Haiti

Cargo No details

Type of Casualty Sinking North West of Haiti having been caught in Hurricane Joaquin. Her 12 crew members abandoned the vessel into a life raft after she began listing 30° and they were later rescued by a Coast Guard helicopter.

Type of Claim Total loss claim

Hignya/Turubong 3

Hignya - Bulk carrier, IMO 8060668, Built 1986, 40,016 dwt

Turubong 3 - Fishing vessel, No other details

Date of Casualty 1 October 2015

Voyage Kholmsk, Russia to Kaohsiung, Taiwan

Cargo No details

Further casualties overleaf ▣



Roose + Partners

NEW CASUALTIES - Continued - edition 132

Type of Casualty The bulk carrier allegedly collided with the fishing vessel causing damage and departed the scene.

Type of Claim Collision damage claim
P&I Korea Shipowners

Global Gold

Bulk carrier, IMO9614359, Built 2012, 33,562 dwt

Date of Casualty 2 October 2015

Voyage Manzanillo, Mexico to Astoria, USA

Cargo In ballast

Type of Casualty Allided with pier 1 in Astoria whilst carrying out berthing

LOF NEWS

Kapitan Yakovlev ▣

General cargo with container capacity, IMO 9077575, Built 1996, 4,618 dwt

Date of Casualty 1 October 2015

Voyage Hull, UK to Antwerp, Belgium

Cargo No details

Type of Casualty Ran aground near Dow Scheldjettje, Terneuzen. The vessel was refloated the same day under the terms of an LOF Salvage Contract with Multirash Salvage BV and URS Salvage.

Type of Claim LOF Salvage Claim
P&I UK Club



New Hunter

Bulk carrier, IMO 9296781, Built 2002, 46,412 dwt

Date of Casualty 6 October 2015

Voyage Paramaribo, Suriname to Baltimore, USA

Cargo 20,125 m³ of alumina

Type of Casualty Aground on the Suriname River. Tsaviris Salvage have been appointed to provide salvage assistance on LOF terms.

Type of Claim LOF salvage claim

manoeuvres. The pier was damaged and the bulker was holed leading to a spill of over 1,100 gallons of diesel. The vessel was scheduled to load lumber.

Type of Claim Allision damage claim and clean-up operations

P&I Japan Shipowners

Ilmamui ▣

General cargo vessel, IMO 7607077, Built 1978, 950 dwt

Date of Casualty 2 October 2015

Type of Casualty Sank whilst at the Port of Perkasa, Bangka island, Indonesia. The vessel has been in lay-up for three years.

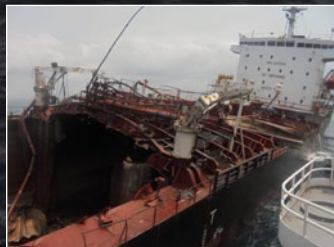
Type of Claim Total loss claim



CASUALTY FOLLOW-UP

Maersk Karachi – editions 112, 113, 115, 116, 117, 118 & 122 – on 2 October 2015 the containership was towed out of the port of Bremerhaven to the New Weser Roads where she anchored.

Abis Esbjerg – edition 116 – the trawler, *Trui van Hinte*, which was seriously damaged by the *Abis Esbjerg* in June has completed repairs in Harlingen.



Fair Afroditi ▣ – edition 125 – the LOF salvage services were completed by Tsaviris on 8 September but a skeleton

Silver Spirit

Passenger cruise ship, IMO 9437866, Built 2009, 4,000 dwt

Date of Casualty 3 October 2015

Type of Casualty Fire in the air conditioning system on deck 3 whilst underway from Agios Nikalao, Crete to Thira. The fire was extinguished by the crew using CO₂. No one was injured.

Type of Claim Fire damage claim

P&I Skuld

Lovund

Passenger ro-ro, IMO 9664471, Built 2013, 360 dwt

Date of Casualty 4 October 2015

Type of Casualty Grounded off Sleneset whilst departing for Onoya after rudder failure. The vessel was refloated by express boat Helgeland and returned to Slenese where her passengers disembarked.

Type of Claim Hull damage claim

Karinya - FR 699

Trawler, No other details

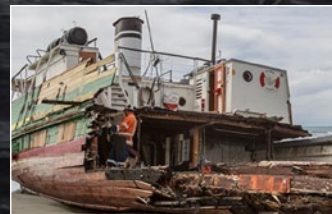
Date of Casualty 4 October 2015

Type of Casualty Fire and subsequent

salvage team and the tug *Guardian* will remain in attendance providing basic essential services until the vessel's final disposal.

Azurit – edition 131 – was refloated at high tide on 1 October 2015 and towed into the port of Båtsfjord. She has since proceeded.

Tuhoe ▣ – edition 131 – the two-masted schooner which ran aground near the entrance of the Waimakariri River near Christchurch, New Zealand last week suffered significant damage whilst aground and broke up.



sinking 40 nm from Fraserburgh. All five crew abandoned the vessel into the life-raft and were later picked up by a nearby trawler.

Type of Claim Total loss claim

Romi

General cargo vessel with container capacity, IMO 8922266, Built 1992, 4,220 dwt

Date of Casualty 4 October 2015

Voyage Szczecin, Poland to Orehoved, Denmark

Cargo No details

Type of Casualty Allided with a bridge pylon near the port of Orehoved, Denmark. Both the vessel and bridge were damaged.

Type of Claim Allision damage claim

P&I Gard

Yan Da 668

General cargo vessel, No other details

Date of Casualty 4 October 2015

Voyage No details

Cargo No details

Type of Casualty Draggd at anchor on Zhanjiang roads, ran aground and sank during a typhoon. The superstructure remained above the water. All seven crew jumped into the water and all but one reached the shore safely.

Type of Claim Wreck removal operations and loss of life claim

Marstal

Ro-ro, IMO 9199074, Built 1999, 490 dwt

Date of Casualty 5 October 2015

Type of Casualty Allided with the Svendborg Bridge during fog.

Type of Claim Allision damage claim
P&I Shipowners Club



Tripoli ▣

Inland cargo vessel, IMO 9540546, Built 2008, 5,524 dwt

Date of Casualty 5 October 2015

Voyage Rotterdam, Netherlands to Duisburg,

Cargo Empty containers

Type of Casualty Allided with the Merwede bridge between Dordrecht and Papendrecht. One container was damaged and one lost overboard.

Type of Claim Allision damage claim

Haidar ▣

Fully cellular containership, IMO 9083067, Built 1994, 6,419 dwt

Date of Casualty 6 October 2015

Voyage Vila do Conde, Brazil to Cartagena, Colombia

Cargo 5,000 cattle

Type of Casualty Capsized whilst loading cargo at Vila do Conde Port. An awful casualty.

Type of Claim Total loss, cargo loss and wreck removal

Apollon Hellas

Ro-ro ferry, IMO 8807105, Built 1990, 1,032 dwt

Date of Casualty 6 October 2015

Type of Casualty Fire in one of the vehicle decks whilst undergoing repairs at Drapetozona port.

Type of Claim Fire damage claims

FESCO Posyet

General cargo vessel with container capacity, IMO 9004516, Built 1992, 9,597 dwt

Date of Casualty 6 October 2015

Voyage Incheon, South Korea to Pohang, North Korea

Cargo No details

Type of Casualty In collision with an unnamed fishing vessel off Pohang. All six crew member were safe and despite damage the fishing vessel remained afloat.

Type of Claim Collision damage claim

P&I UK Club

Christiane ▣

Inland cargo vessel, Built 1957, 1,202 dwt

Date of Casualty 6 October 2015

Voyage Passau, Germany to Budapest, Hungary

Cargo No details

Type of Casualty Allided with a retaining wall whilst transiting the Danube causing damage to both the vessel and the wall.

Type of Claim Allision damage claim

