

FEATURE CASUALTY

Ems Majestic

General cargo vessel with container capacity, IMO 9148104, Built 1996, 3,420 dwt

Date of Casualty 6 December 2015

Voyage Rotterdam, Netherlands to St. Malo, France

Cargo Grain

Type of Casualty Water ingress with risk of sinking

Type of Claim General Average declaration

P&I Hanseatic

In the evening of 6 December 2015 whilst the Antigua-Barbuda-flagged general cargo vessel *Ems Majestic* was transiting the Dover Strait in the traffic separation scheme of Pas-de-Calais and some 13 miles south east of Eastbourne, UK she began taking on water into her engine room. Unable to control the water ingress and fearing that the vessel would sink the Master issued a Mayday alert at 7.09 pm. The Eastbourne RNLI lifeboat and coastguard helicopters from Lee on Solent in Hampshire and Lydd, Kent were sent to the vessel's location and a number of commercial vessels also diverted to provide assistance. Two of

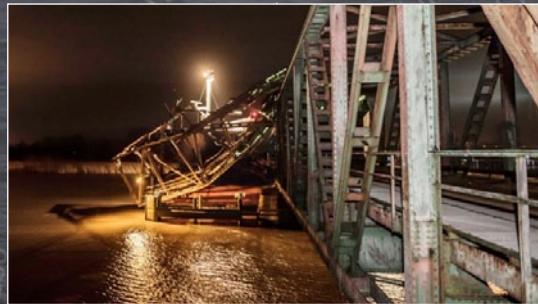
the crew were airlifted from the vessel and five remained on board. A short video filmed by RNLI volunteer Alex Emberley shows the conditions rescuers faced during their efforts to assist the vessel can be viewed by clicking [here](#).

The seismic research vessel *Thor Frigg* also proceeded to the casualty's location and was able to pass a line to the *Ems Majestic* and began towing the vessel towards Portsmouth. *Thor Frigg* is owned by Thor Offshore and was completed and delivered in August 2015. In the meantime by 11 pm the crew reported that they had been able to bring the water ingress under control. The tug *Abeille Languedoc* was also sent from Boulogne to standby near the Greenwich buoy, west of the traffic separation zone. Two tugs were later contracted to tow the vessel to Southampton where she arrived at 1200 hours on 7 December 2015.

The *Ems Majestic* was built in the Netherlands in 1999 by Harlingen Scheepswerf & Reparatiebedrijf and is owned and managed by German company Fehn Shipmanagement. She had sailed from Rotterdam with a cargo of grain and was bound for St. Malo in France.



NEW CASUALTIES



Emsmoon

General cargo vessel with container capacity, IMO 9213894, Built 2000, 6,335 dwt

Date of Casualty 3 December 2015

Voyage Papenburg, Germany to unknown destination

Cargo No details

Type of Casualty Allided with the Friesen Bridge in Weener on the Ems causing considerable damage to the railway bridge. The vessel was separated from the structure in the evening and towed back to Papenburg.

Type of Claim Allision damage claim

P&I Britannia

Amur 36

General cargo vessel with container capacity, IMO 8837966, Built 1990, 3,332 dwt

Date of Casualty 3 December 2015

Voyage Plastun to Svetlaya, Russia

Cargo In ballast

Type of Casualty Dragged at anchor and ran aground in stormy weather in Zolotaya Bay. The hull was breached in her steering compartment and ballast tanks. Salvage tug

Rubin was dispatched to assist from Nevelsk where she had been engaged in the operations to the *Nadezhda* (our feature last week).

Type of Claim Hull damage and salvage claim

Primula Seaways/ City of Rotterdam

Primula Seaways - Ro-ro, IMO 9259513, Built 2004, 11,598 dwt

City of Rotterdam - Vehicle carrier, IMO 9473468, Built 2011, 5,000 dwt

Date of Casualty 3 December 2015

Voyage Skaw, Denmark to Immingham, UK / Immingham, UK to Emden, Germany

Cargo n/a / No details

Type of Casualty Collision near

Cleanness buoy on the Humber estuary. The *City of Rotterdam* suffered heavy damage.

Type of Claim Collision damage claim

P&I West of England / Japan shipowners

Magritte

Yacht, No other details

Date of Casualty 3 December 2015

Type of Casualty Abandoned near the Cape Verde Islands following water ingress. Cargo vessel *SCL Basilea* diverted to provide assistance to the crew. The yacht, which later sank, was taking part in the Atlantic Rally for Cruisers and was heading for St Lucia.

Type of Claim Total loss claim



Nyffjell

General cargo vessel, IMO 7602584, Built 1977, 1,261 dwt

Date of Casualty 4 December 2015

Voyage Floro to Nordfjordeid, Norway

Cargo Gravel

Type of Casualty Grounded in



Bremanger east of Risoya, Norway. The vessel was lightened (suggestions it was dumped) to assist with the refloating.

Type of Claim Possible hull damage and cargo loss

P&I Skuld

Atlantic Conveyor

Ro-ro with container capacity, IMO 8215534, Built 1985, 51,648 dwt

Date of Casualty 4 December 2015

Voyage Liverpool, UK to Baltimore, USA

Cargo No details

Type of Casualty Ran aground. The vessel was refloated and anchored in Moelfre Roads. She has since proceeded.

Type of Claim Possible hull damage claim

P&I North of England



Victoria 1

Ferry, IMO 9281281, Built 2003, 9,000 dwt

Date of Casualty 4 December 2015

Type of Casualty Suffered storm damage and some flooding whilst enroute to Stockholm from Tallinn. The vessel was forced to return to Tallinn.

Type of Claim Damage claim

P&I Gard

Dialog

Tanker, Built 1978, 65 dwt

Date of Casualty 4 December 2015

Voyage No details

Cargo No details

Type of Casualty Struck an underwater object whilst departing Astrakhan. The vessel was holed amidships and suffered water ingress. Tugs are assisting.

Type of Claim Hull damage and possible salvage claim



Hanjin Aqua

Fully cellular containership, IMO 9632480, Built 2013, 62,448 dwt

Date of Casualty 4 December 2015

Voyage Brisbane, Sydney, Melbourne and Adelaide, Australia to Jakarta, Indonesia, Port Klang, Malaysia and Singapore

Cargo General containerised cargo

Type of Casualty Ran aground off Sangiang Island in the Sunda Strait with 2,303 containers on board. The hull was breached and one of her ballast tanks flooded with the vessel developing a portside list of 3°. The vessel remains aground and news is awaiting regarding salvage arrangements.

Type of Claim Hull damage, possible salvage claim and/or General Average declaration

P&I Korea Shipowners

Carolyn G.

General cargo with container capacity, IM 09462500, Built 2008, 3,850 dwt

Further casualties overleaf

Roose + Partners

NEW CASUALTIES - Continued - edition (141)

Date of Casualty 5 December 2015

Voyage Brunsbüttel, Germany to Swinoujscie, Poland

Cargo No details

Type of Casualty Allided with and damaged the Navy Piling at the South Quay in Brunsbüttel after an engine malfunction.

Type of Claim Allision damage claim



Goudvis 2 ▣

Self-propelled barge, Built 1995, 3,125 dwt

Date of Casualty 5 December 2015

Voyage No details

Cargo In ballast

Type of Casualty Engine room fire and disabled on the Outer Maas near Barendrecht

Type of Claim Fire damage claim

Gunashli Platform No. 10

Oil platform, No other details

Date of Casualty 5 December 2015

Type of Casualty Explosion and fire following damage to gas pipelines during bad weather. The Socar platform is in the

Azerbaijani section of the Caspian Sea. Of the 63 people on the platform only 33 were rescued, while 23 are still regarded missing with seven dead.

Type of Claim Fire damage and crew claims



Columbia Elizabeth/Capt Latham ▣

Columbia Elizabeth - Barge, IMO 8639132, Built 1999, 4,649 gt

Capt Latham - Tug, IMO 8109735, Built 1982, 815 gt

Date of Casualty 6 December 2015

Voyage Port Everglades, USA to San Juan, Puerto Rico

Cargo General containerised cargo

Type of Casualty Loss of at least 25 containers off the coast between Port Canaveral and West Palm Beach. The barge was under tow of the *Capt. Latham* which diverted to Palm Beach for further investigation and to re-stow the containers.

Type of Claim Cargo & container loss/damage

P&I Steamship

Wadi Safaga ▣

Bulk carrier, IMO 9460734, Built 2010, 80,443 dwt

Date of Casualty 6 December 2015

Voyage Istanbul, Turkey to Alexandria, Egypt

Cargo 57,500 m³ of wheat

Type of Casualty Grounded near Istanbul off Zeytinburnu. Coastal safety tugs are attending.

Type of Claim Possible hull damage and salvage claim and/or General Average declaration.

P&I North of England

Ionic Spirit

Bulk carrier, IMO 9514200, Built 2010, 56,108 dwt

Date of Casualty 6 December 2015

Voyage Barcelona, Spain to Manaus, Brazil

Cargo Slag

Type of Casualty A floating pier at Chibatao Terminal, Manaus sank whilst the bulk carrier was discharging a cargo of slag. Two cranes and three platforms fell onto the vessel causing damage.

Type of Claim Hull damage claim

P&I Britannia

Gitta Gas

LPG carrier, MO 8817693, Built 1990, 4,811 dwt

Date of Casualty 6 December 2015

Voyage Tripoli, Lebanon to Temryuk, Russia

Cargo In ballast

Type of Casualty Engine failure in the Istanbul Strait. Coastal safety tugs attended and the vessel was taken to Büyükdere area and anchored.

Type of Claim Possible salvage type claim

Cembalo

Bulk cement carrier, IMO 7231191, Built 1973, 4,101 dwt

Date of Casualty 7 December 2015

Voyage Kolding, Denmark to Rostock, Germany

Cargo Cement

Type of Casualty Fire in the accommodation block whilst alongside at Rostock.

Type of Claim Fire damage claim

P&I Gard

Maersk Saigon

Fully cellular containership, IMO 9303534, Built 2006, 108,251 dwt

Date of Casualty 7 December 2015

Voyage Santos, Brazil to Port Elizabeth, South Africa

Cargo General containerised cargo

Type of Casualty Ran aground whilst departing Santos, Brazil. The vessel grounded 30m off the fairway. She was later refloated by tugs and moved to the outer anchorage to undergo surveys but apparently also ran aground whilst enroute to the anchorage. Video of the vessel's departure can be viewed by clicking [here](#).

Type of Claim Possible hull damage, salvage type claim and General Average declaration

P&I Gard

Xin Shen Gang

General cargo vessel, IMO 8651398, 2009, 5,297 dwt

Date of Casualty 8 December 2015

Voyage Yosu, South Korea to Sakaide, Japan

Cargo No details

Type of Casualty Ran aground whilst entering Sakaide port. She was able to refloat under her own power and proceeded.

Type of Claim Possible hull damage claim

P&I Hanseatic

Heung A Jakarta

Fully cellular containership, IMO 9146297, Built 1997, 10,209 dwt

Date of Casualty 8 December 2015

Voyage Yokohama to Nagoya, Japan

Cargo General containerised cargo

Type of Casualty Engine problems. The vessel is being towed to Yokohama.

Type of Claim General Average

P&I Korea Shipowners

Asakaze

General cargo vessel, IMO 9691187, Built 2014, 11,382 dwt

Date of Casualty 8 December 2015

Voyage Bangkok, Thailand to Kinoura, Japan

Cargo 10,000 m³ of raw sugar

Type of Casualty Ran aground off Minamichita, Aichi Prefecture, Japan. Tug *Aichi Maru* attended and the vessel was refloated earlier today.

Type of Claim Possible hull damage and

CASUALTY FOLLOW-UP



Angelika ▣ - GRE 16 - edition 139 - the wreck of the fishing vessel was raised off Eemshaven by the sheerleg *Triton* on 5 December. She was placed onto a barge and taken to the port of Delfzijl.

Skog - edition 139 - the general cargo vessel departed Orkney bound for Clydeport in the early hours of 3 December following the completion of repairs.

Suilven - edition 139 - Fiji's Ministry of Infrastructure and Transport (MIT) says that inspection dives have shown that there is no fuel leakage from the ro-ro which sunk in Suva Harbour on 24 November 2015. Some 3,000 litres of light diesel fuel remains in its.



Szafir ▣ - edition 139 - after 12 days in captivity the five kidnapped crew have been released after negotiations with the Nigerian pirates were successful.

Navios Sagittarius - edition 140 - the bulk carrier which grounded on the Paraná river on 30 November 2015 has been refloated by the Argentine tug *Ranquel*, the *Tifon* from San Lorenzo and the *Remolcador Tifon*. The bulker has since proceeded.

Nadezhda ▣ - edition 140 - More oil products have been pumped from chemical tanker following an improvement in the weather. An Mi 8 helicopter delivered a generator onto the tanker to speed up the work. Work has also continued to clean up the coastline and collect contaminated soil. The vessel remains aground.



salvage claim
P&I Japan Shipowners

Eurocargo Patrasso/Dinah Borchard

Eurocargo Patrasso - Ro-ro, IMO, 9131527 Built 1998, 11,600 dwt

Dinah Borchard - Fully cellular containership, IMO 9318929, Built 2004, 8,223 dwt

Date of Casualty 9 December 2015

Access all our previous casualty newsletters [here](#)

Voyage Venice to Ravenna, Italy / Venice, Italy to Limassol, Cyprus

Cargo General cargo

Type of Casualty Collision whilst departing Venice. Both vessels were damaged.

Type of Claim Collision damage claim

P&I North of England / Hydor AS