

FEATURE CASUALTY

Platinum

General cargo vessel, IMO 8649814, Built 2010, 2,528 dwt

Date of Casualty 16 December 2015

Voyage Nagoya, Japana to Haimen, China

Cargo 1,700 m/t of steel

Type of Casualty Fire

Type of Claim Fire damage claim

At 7am this morning, the Cambodian flagged general cargo vessel *Platinum* reported a fire on board whilst in a position six miles south of Seogwipo, South Korea in the East China Sea.

The 2010 built vessel was en route from Nagoya to Haimen loaded with a cargo of steel when the fire erupted in the superstructure where the crew accommodation is located. It extended throughout the crew accommodation, bathroom, mess-room and laundry room with almost all of the crew compartments on the main deck being affected. The duty officers took steps to turn off the engine and diesel generators shutting

off all power in attempt to stem the further spread of the fire. The eleven strong crew started direct firefighting and after six hours they succeeded in fully extinguishing the fire. No injuries were reported.

No outside intervention was required although the local authorities were monitoring the ship throughout and were ready to dispatch a firefighting tug to assist should it be required. After the fire was brought under control the crew were able to restart the engines and the *Platinum* continued with her voyage to China under her own power. Reports suggest the fire was caused by a short circuit of personal appliances. The local authority did not require the vessel to remain for inspection and a full investigation into the cause of the fire will take place once the vessel reaches China.

The ship was built in 2010 by Zhejiang Donghong Shipyard in Xiangshan, China and is managed by Zhongyu Ocean Group Company Limited.



NEW CASUALTIES



Girolando Express ▣

Livestock carrier, IMO 9640750, Built 2014, 5,488 dwt

Date of Casualty 6 December 2015 - Late Notification

Voyage Geelong, Australia for Huanghua, China

Cargo 4245 cattle on board

Type of Casualty Engine breakdown and steering issues. The vessel sought refuge in Port Phillip.

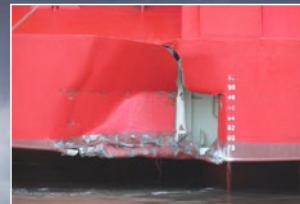
Type of Claim Possible General Average declaration

P&I North of England

Thames Highway ▣

Vehicle carrier, IMO 9316294, Built 2005, 7,750 dwt

Date of Casualty 8 December 2015



Late Notification

Voyage Uusikaupunki, Finland to Bremerhaven, Germany

Cargo Vehicles

Type of Casualty Allided with a quay in Bremerhaven. Both the vessel and quay suffered damage.

Type of Claim Allision damage claim

P&I West of England

Nazmehr ▣

General cargo vessel, IMO 8876522, Built 1998, 2,755 dwt

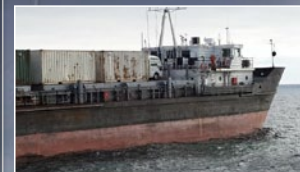
Date of Casualty 9 December 2015

Voyage Iran to Aktau, Kazakhstan

Cargo Containerised cargo, a bus and cars

Type of Casualty Dragged at anchor and ran aground off Kuryk port, south of Aktau in the Caspian Sea. The hull sustained multiple breaches from the rocky seabed. Salvors lightered of all the cargo to barges. Patching and dewatering operations are underway.

Type of Claim Hull damage, salvage claim and/or General Average declaration



Ela S ▣

General cargo with container capacity, IMO 8409654, Built 1984, 2,311 dwt

Date of Casualty 9 December 2015

Voyage Nikolayev, Ukraine to Amfilochia, Greece

Cargo No details

Type of Casualty Technical failure whilst transiting the Istanbul Strait. Coastal safety tugs attended.

Type of Claim Possible salvage fine/claim

P&I Hanseatic



Neptun Khan ▣

Hopper barge, IMO 8955134, Built 1999, 268 gt

Date of Casualty 9 December 2015

Type of Casualty Pushed aground by the currents and winds on Rincollio Beach. The vessel was working off Isla Verde and Campamento.

Type of Claim Possible hull damage and salvage type claim



Heilhorn ▣

Ro-ro, IMO 7814333, Built 1978, 336 dwt

Date of Casualty 10 December 2015

Type of Casualty Ran aground shortly after the departing Sandvikvåg in Fitjarg. 13 passengers were evacuated and the ferry was refloated and towed to Sandvivaag.

Type of Claim Hull damage claim

P&I Gard

Hang Bo 3001

Dredger, IMO 9644926, Built 2013, 3,363 dwt

Date of Casualty 11 December 2015

Voyage Ashdod to Haifa, Israel

Type of Casualty Caught fire at Haifa Port whilst undergoing repairs.

Type of Claim Fire damage claim

P&I UK Club

[Further casualties overleaf](#)



Roose + Partners

NEW CASUALTIES - Continued - edition (142)



Mona ▣

Hopper barge, IMO 8857124, Built 1985, 674 dwt

Date of Casualty 11 December 2015

Type of Casualty Grounding on a sandbank off Harstad, Norway. The vessel was transporting rocks to Sandsoy Sound which were to be used in the construction of a bridge.

Type of Claim Possible hull damage

P&I Shipowners Club

Talis

Training ship, IMO 7609180, Built 1976, 853 dwt

Date of Casualty 11 December 2015

Type of Casualty Suffered water ingress and began sinking whilst alongside a berth in the Port of Korsakov. Sakhalin rescue authorities assisted with the salvage operation.

Type of Claim Salvage and damage claim



Alpena ▣

Bulk cement carrier, IMO 5206362, Built 1942, 19,419 dwt

Date of Casualty 11 December 2015

Type of Casualty Caught fire whilst in Sturgeon Bay for a five year inspection. The ship was severely damaged.

Type of Claim Fire damage claim

P&I North of England

Manoa

Fully cellular containership, IMO 7907984, Built 1982, 30,825 dwt

Date of Casualty 11 December 2015

Voyage San Francisco to Seattle, USA

Cargo General cargo and containers

Type of Casualty Lost 12 containers off San Francisco Bay. Clean-up operations are underway as containers and cargo are washing up on local beaches.

Type of Claim Container and cargo loss

Cape Horn I

Tug, IMO 9414852, Built 2006, 257 dwt

Date of Casualty 12 December 2015

Voyage Shanghai, China to Singapore

Cargo Barges

Type of Casualty Lost one of two unmanned barges in the East China Sea in rough weather. The salvage tug *Dong Hai Jiu 131* located the barge and assisted in re-fixing the tow enabling the tug to resume the voyage.

Type of Claim Possible salvage type claim

P&I Shipowners Club

Royal 16

General cargo vessel, IMO 9600011, Built 2011, 2,999 dwt

Date of Casualty 13 December 2015

Voyage Ho Chi Minh City, Vietnam to Legazpi, Philippines

Cargo No details

Type of Casualty Ran aground on a coral reef near Legazpi in southeast Luzon during a storm from typhoon Nona.

Type of Claim Reef damage, hull damage claim

P&I West of England

Spence

Tug, IMO 7506780, Built 1974, 129 dwt

Date of Casualty 14 December 2015

Type of Casualty Disabled, adrift and taking on water whilst 85 miles north of Barranquilla in the Caribbean Sea. A rescue tug proceeded and the tug is now under tow to Columbia whilst efforts continue to keep her afloat.

Type of Claim Damage and salvage type claim

Fenja

Passenger ro-ro, IMO , Built 1998, 250 dwt

Date of Casualty 15 December 2015

Type of Casualty Ran aground during the crossing from Fano to Esbjerg. The ferry had 63 passengers on board who had to

be evacuated onto a smaller passenger ferry. The ferry also ran aground on 6 November 2015 (edition 137).

Type of Claim Possible hull damage

P&I Skuld

Samudra Jaya I

Tug, IMO 9532238, Built 2008, 203 dwt

Date of Casualty 14 December 2015

Type of Casualty Suffered water ingress during storms which caused the engine to fail and the tug then sank off Indonesia. All crew members are reported to have been rescued.

Type of Claim Total loss claim



Navigator Europa ▣

LPG carrier, IMO 9661807, Built 2014, 17,005 dwt

Date of Casualty 14 December 2015

Voyage At Houston, USA

Cargo Ethylene

Type of Casualty Caught fire whilst loading a cargo of ethylene at the Targa LPG export terminal, Houston. The fire was extinguished after 90 minutes but led to the closure of the Houston Ship Channel for three hours whilst firefighters monitored the air for toxic fumes. Investigations into the fire are ongoing.

Type of Claim Fire damage claim and possible cargo loss

P&I Britannia

Margaret Ann/William E Strait ▣

Margaret Ann - Tug, Built 1954, 120 gt

William E Strait - Tug, Built 2012, No other details

LOF NEWS

Hanjin Aqua - edition 141 - we understand Smit Salvage have been appointed to provide salvage assistance under an LOF Salvage contract to the containership which remains aground. The vessel has water ingress into her forepeak and No. 1 cargo hold. Roose+Partners are appointed to protect the interests of part cargo on board the vessel.

Access all our previous casualty newsletters here

Date of Casualty 14 December 2015

Type of Casualty Collision on the Mississippi causing the *William E. Strait* to sink. Two of the asphalt barges under tow and a dry cargo barge also sustained damage.

Type of Claim Collision damage claim, salvage and clean-up operations

Jin Long 7

General cargo vessel, IMO 8682402, Built 2006, 3,500 dwt

Date of Casualty 15 December 2015

Voyage Russia to Shanghai, China

Cargo 1,200 m³ of timber

Type of Casualty Engine room fire whilst 12 miles northwest of Jeju in the East China Sea. A fire-fighting team was dispatched by helicopter and controlled the fire. The vessel was then to be towed to Seogwipo.

Type of Claim Fire damage claim

Calypso

General cargo vessel, IMO 7614824, Built 1977, 1,580 dwt

CASUALTY FOLLOW-UP

Ever Smart and Alexandra 1 ▣ - edition 99 - the MAIB has concluded that the collision in the Jebel Ali approach channel in February 2015 was in large part caused by inadequate watch-keeping on both vessels. In addition, the MAIB have found that the traffic management system at Jebel Ali, as well as its pilotage services, did nothing to prevent the collision.

Al Oraiq - edition 132, 133 & 134 - repairs to the vessel which was damaged following the collision with the *Flinterstar* were completed on 12 December at the Harland & Wolff yard in Belfast. The ship left the port around noon bound for Port Said, with an eta of 22 December.

Le Boreal - editions 138 & 139 - is being towed to Punta Arenas for repairs by Ultatug.

Angelika - editions 139 & 141 - investigations into the sudden water ingress and capsizing have commenced at a local yard Delfzijl.

Suilven - editions 139 & 141 - a formal order has been issued to Venu Shipping to remove the wreck from waters within the Suva Harbour by the Fiji Ports Corporation Ltd. FPCL will continue to monitor the vessel and coordinate the salvage/recovery operation, which must be completed within 21 days albeit an extension of time is likely to be granted given the complexity of the operation which is expected to take three months.



Date of Casualty 16 December 2015

Voyage Thessaloniki to Larymna, Greece

Cargo Minerals

Type of Casualty Ran aground on rocks northwest of Edipsos, Evia. A tug has been sent to assist.

Type of Claim Hull damage and possible salvage claim

Xiangjing Express

General cargo vessel, IMO 8662933, Built 2001, 1,904 gt

Date of Casualty 16 December 2015

Voyage Pontianak, Indonesia to Yakkaicha, Japan

Cargo No details

Type of Casualty Adrift with engine trouble.

Type of Claim Possible salvage claim and/or General Average declaration

Stolt Commitment/Thorco Cloud

Stolt Commitment - Chemical tanker, IMO 9168647, Built 2000, 37,438 dwt

Thorco Cloud - General cargo vessel with container capacity, IMO 9290050, Built 2004, 10,386 dwt

Date of Casualty 16 December 2015

Voyage Singapore to Kaohsiung, Taiwan / Batu Ampar, Indonesia to Durban, South Africa

Cargo No details / General containerised cargo

Type of Casualty In collision in the Singapore Straits. The *Thorco Cloud* sank. Six crew members are missing.

Type of Claim Collision damage claim, cargo loss and loss of life claims

P&I Gard / Standard Club

