

Roose + Partners

Casualty Newsletter 149

3rd February 2016

FEATURE CASUALTY

Modern Express

Vehicle carrier, IMO 9231688, Built 2001, 10,817 dwt

Date of Casualty 26 January 2016

Voyage Libreville, Gabon to Le Havre, France and Antwerp, Belgium

Cargo Trucks, trailers, timber, heavy plant and containers

Type of Casualty Engine breakdown and abandoned with a significant list

Type of Claim LOF salvage claim, cargo damage and possible General Average declaration

P&I Gard

The vehicle carrier *Modern Express*, which was our Feature Casualty last week, has been taken in tow and yesterday the vessel arrived off Cape Matxitxako. The vessel was being held by tugs *Alice One*, *Centaurus*, *Ibaizabal Once* and *Maria De Maeztu* in a sheltered position 20 nm north of Bilbao whilst arrangements to take her into Bilbao are finalised between Smit Salvage and the Bilbao Port Authority. She is expected to be brought into Bilbao today.

Bad weather and rough seas have hampered the efforts of the salvors to attach a line to the stricken carrier over the past week and the vessel has been drifting in the Bay of

Biscay since 26 January after she developed a significant list. French authorities reported in a press conference that the vessel was some 50 nm west off Arcachon, France. They advised she was drifting close to a sandy shallow and that there was some concern that she would run aground. The car carrier was reported to have some 300 m/t of oil on board and whilst there was no particular danger from oil leaks anti-pollution measures were being undertaken. The vessel has endured poor weather for the last week but despite this she appeared to have stabilised with her list being held at 50°. With efforts to attach a line initially failing due to the poor weather, salvors were reported to be considering trying to push the vessel towards the coast.

The LOF salvors finally succeeded in establishing the towage connection to the vessel on 1 February. A four man team from Smit Salvage boarded the casualty and fixed the line to the Spanish salvage tug *Centaurus*. At the time the connection was made the vessel was 25 nm from the coast.

Reports suggest that the vessel may have been carrying an illegal cargo of logs. It is unlawful to export logs from Gabon and any wood being exported must be in the form of sawn timber. Gabon's Economy Minister said that the vessel's manifest showed the vessel to be carrying 4,089 m/t of sawn timber and not logs as has been reported. The remaining cargo on board was used construction vehicles and equipment.

NEW CASUALTIES

Rak 1

General cargo vessel, IMO 8010946, Built 1980, 2,996 dwt

Date of Casualty 25 January 2016
- Late Notification

Voyage Mina Saqr, UAE to Kuwait

Cargo No details

Type of Casualty Sank in a position lat 26 03.7N, long 50 39.9E. All crew were rescued.

Type of Claim Total loss claim

Golden Ruby/Frontier Island

Golden Ruby - Bulk carrier, IMO 9470399, Built 2014, 74,052 dwt

Frontier Island - Bulk carrier, IMO 9573749, Built 2011, 18,135 dwt

Date of Casualty 26 January 2016
- Late Notification

Voyage Mo i Rana, Norway to Ymuiden, Netherlands / Sepetiba, Brazil to Ymuiden, Netherlands

Cargo No details

Type of Casualty The *Golden Ruby* collided with the *Frontier*



Island which was berthed in Ijmuiden at Tata Steel Works causing a breach in the hull above the water line.

Type of Claim Collision damage claim

P&I North of England / Gard



Sea Worker

Drill Platform, IMO 8769705, Built 2008, 1,815 dwt

Date of Casualty 26 January 2016
- Late Notification

Voyage Esbjerg to Frederikshavn, Denmark

Cargo n/a

Type of Casualty Broke free during a tow and subsequently ran aground off Denmark near Nymindegab. Smit Salvage are appointed as LOF salvors.

Type of Claim LOF Salvage claim

P&I Standard Club

Miss Lynn

Fishing vessel, No other details

Date of Casualty 28 January 2016

Type of Casualty Sank off Port Clyde, Maine following an engine room fire. The crew were

rescued from the sea.

Type of Claim Total loss claim

Elbe Highway

Vehicle carrier, IMO 9316282, Built 2005, 7,750 dwt

Date of Casualty 28 January 2016

Voyage Emden to Cuxhaven, Germany

Cargo Vehicles

Type of Casualty Allided with the quay of the inner basin of Emden whilst departing the port.

Type of Claim Allision damage claim

P&I Gard

Hua Dong 808

General cargo vessel, No other details

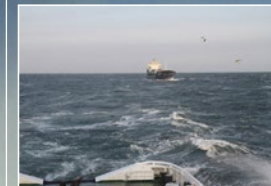
Date of Casualty 28 January 2016

Voyage Bayuquan to Dalian, China

Cargo 396 containers of general cargo

Type of Casualty Engine failure south of Dalian. The vessel was taken in tow to Dalian.

Type of Claim Possible salvage claim



Further casualties overleaf ▶

Leon Dias

Tanker, IMO 9279927, Built 2003, 9,055 dwt

Date of Casualty 29 January 2016

Voyage Lome, Togo to Bata, Equatorial Guinea

Cargo No details

Type of Casualty Attacked in the Gulf of Guinea. Five crew members have been taken hostage and the chief officer seriously injured.



Verity

General cargo vessel, IMO 9229178, Built 2001, 3,330 dwt

Date of Casualty 29 January 2016

Voyage Dublin, Ireland to Ferrol, Spain

Cargo 3,000 m/t of scrap steel

Type of Casualty Suffered engine failure off Hartland Point during gales. The vessel was towed to Swansea for repairs by the tug *Bremen Fighter*.

Type of Claim Possible salvage claim and/or General Average declaration

P&I North of England

Type of Claim Piracy

P&I UK Club

Delta Sailor/Gottskar

Delta Sailor - Crude oil tanker, IMO 9288722, Built 2005, 111,004 dwt

Gottskar - Fishing vessel, No other details



Roose + Partners

NEW CASUALTIES - Continued - edition (149)

Date of Casualty 28 January 2016

Voyage Brofjorden, Sweden to Primorsk, Russia

Cargo No details

Type of Casualty In collision south-west of Gothenburg causing damage to the fishing vessel. The *Delta Sailor* continued her voyage.

Type of Claim Collision damage claim
P&I West of England

SBI Flamenco

Bulk carrier, IMO 9710579, Built 2015, 81,800 dwt

Date of Casualty 29 January 2016

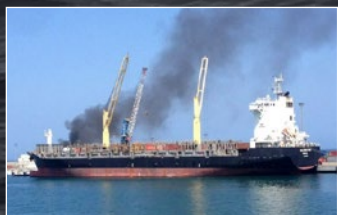
Voyage Riga, Latvia to Praia Mole, Brazil

Cargo 76,000 m/t of coal

Type of Casualty Engine failure 35 nm north-west of Cherbourg. Salvage tug *Abeille Liberté* was dispatched and towed the vessel into Le Havre.

Type of Claim Possible salvage claim and/or General Average declaration

P&I Steamship Mutual



Melbourne Strait

Fully cellular containership, IMO 9362736, Built 2008, 25,849 dwt

Date of Casualty 29 January 2016

Voyage Willemstad, Curaçao to La Guaira, Venezuela

Cargo General containerised cargo

Type of Casualty Fire in the cargo hold whilst docked in the port of La Guaira

Type of Claim Fire damage claims

P&I Gard

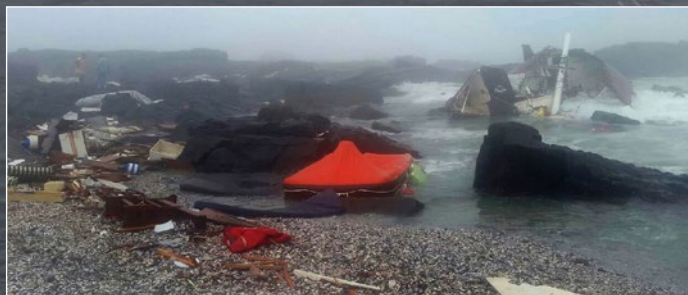
Marmaui

General cargo vessel with container capacity, IMO 9438573, Built 2008, 11084 dwt

Date of Casualty 30 January 2016

Voyage Iceland to Rotterdam, Netherlands

Cargo General containerised cargo



Type of Casualty Loss of empty containers overboard.

Type of Claim Container loss

P&I Swedish Club

Afalina

General cargo vessel with container capacity, IMO 8820092, Built 1989, 4,535 dwt

Date of Casualty 30 January 2016

Voyage Ventspils, Latvia to Rostock, Germany

Cargo Wood

Type of Casualty Lost deck cargo during a storm of the Latvian coast.

Type of Claim Cargo loss

P&I Shipowners



Nina Bres

General cargo vessel with container capacity, IMO 9394260, Built 2007, 3,740 dwt

Date of Casualty 31 January 2016

Voyage Antwerp, Belgium to Halmstad, Sweden

Cargo No details

Type of Casualty Suffered engine failure whilst transiting the Kiel Canal at Rendsburg. The vessel drifted towards the ferry port and stopped across the canal blocking it temporarily. Tug *Nok 1* assisted.

Type of Claim Possible assistance claim

Tara

Yacht, No other details

Date of Casualty 1 February 2016

Type of Casualty Capsized and struck rocks near Bokpunt, west coast of South Africa. Two of those aboard died.

Type of Claim Total loss and loss of life claims

Tulum

Product tanker, IMO 9222560, Built 2000, 47,131 dwt

Date of Casualty 31 January 2016

Voyage Havana, Cuba to Falmouth, UK

Cargo Naphtha

Type of Casualty Suffered main engine turbocharger failure. The vessel is now in Bermuda for repairs.

Type of Claim Possible General Average declaration

P&I UK Club

Avocet Arrow

Bulk carrier, IMO 9448255, Built 2015, 62,823 dwt

Date of Casualty 31 January 2016

Voyage Atucha to Campana, Argentina

Cargo No details

Type of Casualty Suffered a blackout and ran aground on the Parana River. The vessel was refloated the following day with the help of two tugs.

Type of Claim Possible salvage claim and/or General Average declaration

P&I Gard

Aasvik

General cargo vessel with container capacity, IMO 8500898, Built 1986, 4,319 dwt

IN OTHER NEWS

Multraship Ocean Towage BV has taken over the contract to operate the new Netherlands Coastguard's Emergency Towing Vessel (ETV) from Svitzer Towage. Terneuzen-based Multraship will operate the 2013 built anchor-handling tug *levoli Amaranth*, which will be renamed *Guardian*, for a period of 10 years. The tug will remain based in Dan Helder and will respond to assist vessels when weather reaches Beaufort force five. The 65m long, 15.5m beam tug is powered by two MAK main engines developing 8,000kW and a maximum bollard pull of 149t. Propulsion is via conventional twin controllable pitch propellers.

Nick Sloane has joined Resolve Marine Group as the firm's new director. Nick has over thirty years of experience in the salvage industry as a salvage master and project manager and is perhaps most well known for leading the salvage of the *Costa Concordia*.

Date of Casualty 1 February 2016

Voyage Belfast to Cardiff, UK

Cargo 4,450 m/t of stone

Type of Casualty Engine failure in the Bristol Channel. The vessel was caught in bad weather and had to drop her anchor near Swansea to prevent grounding. She will be towed to Cardiff.

Type of Claim Possible General Average declaration

P&I Gard

South Star

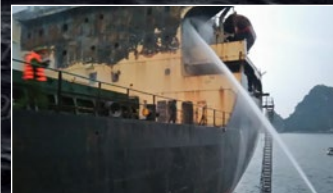
Bulk carrier, IMO 8400517, Built 1985, 27,652 dwt

Date of Casualty 2 February 2016

Voyage Ho Chi Minh City to Cam Pha, Vietnam

Cargo No details

Type of Casualty Fire in the



CASUALTY FOLLOW-UP

Sewol - editions 113, 117, 120, 123, 125 & 131 - almost every single step of the salvage operation has been delayed primarily due to unfavourable weather conditions and the strong currents in the area where the wreck is located. It

reportedly took nearly double the expected time to remove the residual oil and triple the time to install netting on the windows and doors which is aimed to ensure that the contents of the ship, including any of the nine unaccounted bodies, were not lost.

Los Llanitos - editions 135, 136 & 145 - after reviewing a structural report on the grounded bulk carrier, the Mexican government have ordered, subject to an environmental assessment, that the bulk carrier should be dismantled in situ, rather than trying to refloat the vessel in one or two pieces.



accommodation block whilst anchored at Cam Pha, Tonkin Bay awaiting unloading operations.

Type of Claim Fire damage claim

Volgo-Balt 236

General cargo vessel, IMO 8230508, Built 1982, 3,209 dwt

Date of Casualty 2 February 2016

Voyage Azov, Russia to Ambarli, Turkey

Cargo Peas

Type of Casualty Ran aground on the River Don.

Type of Claim Possible hull damage and salvage claim

Damiano/Veerhaven III

Damiano - Inland tanker, 1568 ts

Veerhaven III - Inland pusher tug, No other details

Date of Casualty 2 February 2016

Voyage Antwerp, Belgium to Moredijk, Netherlands

Cargo 1,000 m/t of benzene

Type of Casualty The vessels were in collision on the Waal near Zuilichem. The tanker suffered severe damage.

Access all our previous casualty newsletters here



Type of Claim Collision damage and possible salvage and/or General Average declaration

Nordbay

Crude oil tanker, IMO 9319870, Built 2007, 116,104 dwt

Date of Casualty 2 February 2016

Voyage Puerto Jose Terminal, Venezuela to Sabine, USA

Cargo Crude oil

Type of Casualty Holed when she struck the Jefferson Parish water intake near New Orleans on the Mississippi River

Type of Claim Allision damage claim

P&I Gard

Sabuk Nusantara 55

Ferry, IMO 9787663, Built 2015, 446 dwt

Date of Casualty 2 February 2016

Type of Casualty Grounded on reef off Pulau Pamalikan Island in Java Sea.

Type of Claim Hull damage and possible salvage claim