

FEATURE CASUALTY

Celebrity Infinity

Passenger cruise ship, IMO 9189421, Built 2001, 11,778 dwt

Date of Casualty 3 June 2016

Voyage Juneau to Ketchikan, Alaska, USA

Cargo n/a

Type of Casualty Allision in Alaska

Type of Claim Allision damage claim

P&I UK Club

At 14.15 hours on 3 June 2016 the cruise ship *Celebrity Infinity* allided with berth No. 3 as she was arriving at Ketchikan Harbour in Alaska, USA. The cruise ship was arriving from Juneau and manoeuvring towards the berth when she crashed sideways into the dock and hit a dolphin. The gangplank on the dock crashed into the water. The vessel was under the control of a local pilot at the time. For video of the incident click [here](#).

Onlookers, longshoremens, port security personnel and *Celebrity* employees waiting at the dock realised there was a problem with the ships approach and moved so were not caught by the vessel and structure. There was a suggestion that the vessel was caught

by a sudden gust of wind or that there was a malfunction of the bow thrusters. Owners have blamed the winds which were reported to be gusting at 45 mph as the vessel made her approach. Berth No. 3 suffered serious damage. Initial estimates put the costs to repair the facility between USD2 to 3 million. However since then Turnagain Marine Construction have been contracted to repair the damage for USD928,580. With additional costs the total costs are likely to be approximately USD2million. Repairs have already commenced.

There are no reports of any injuries to passengers on board. The vessel did not appear to suffer any significant damage. She suffered some scraping and a small hole in her hull. These were quickly repaired and the vessel was able to depart Ketchikan on schedule.

The Coast Guard Marine Safety Detachment in Ketchikan is investigating the cause of the allision.



NEW CASUALTIES

Kelud

Passenger ro-ro, IMO 9139684, Built 1998, 3,537 dwt

Date of Casualty 1 June 2016

Type of Casualty Grounded on the approach to Sekupang port, Batam, Riau Islands, Indonesia. The vessel was carrying 714 passengers. The vessel refloated on the high tide.

Type of Claim Possible hull damage



Ara Espora/Saturn

Ara Espora - Argentinian Naval Corvette, 1,790 displacement tons

Saturn - Chemical tanker, IMO 9400851, Built 2009, 13,052 dwt

Date of Casualty 1 June 2016

Voyage No details / San Lorenzo to Campana, Argentina

Cargo n/a / No details

Type of Casualty The navy vessel dragged at anchor and collided with the *Saturn* in the Bahia Blanca estuary, south of Buenos Aires, Argentina. The *Ara Espora* suffered serious damage

Type of Claim Collision damage claim.
P&I n/a / Steamship Mutual

Lené D

General cargo vessel, IMO 8611013, Built 1987, 1,900 dwt

Date of Casualty 1 June 2016

Voyage Lübeck, Germany to Szczecin, Poland

Cargo No details

Type of Casualty Ran aground departing Lübeck. The vessel was refloated by the tug *Simson*.

Type of Claim Possible salvage type claim

Ever Prosper/Ever Dignity

Ever Prosper - Tug, Built 2015, 126 gt

Ever Dignity - Barge, 2,104 gt

Date of Casualty 2 June 2016

Voyage No details

Cargo Crude palm kernel oil

Type of Casualty Hijacked and stolen cargo off Kalimantan, Malaysia.

Type of Claim Cargo loss

Uilenspiegel

Hopper dredger, IMO 9247467, Built 2002, 21,968 dwt

Date of Casualty 2 June 2016

Type of Casualty Engine room fire off the Wester Scheldt 10 miles into the North Sea. The crew extinguished the fire and the tug *Odin* towed the dredger to the Damen ship repair yard.

Type of Claim Fire damage claim

P&I Shipowners Club



Rix Emerald/Arklow Breeze

Rix Emerald - General cargo with container capacity, IMO 9116802, Built 1995, 3,001 dwt

Arklow Breeze - General cargo vessel, IMO 9638812, Built 2015, 8,660 dwt

Date of Casualty 2 June 2016

Voyage Brunsbüttel, Germany to Thyboren, Denmark / Brunsbüttel, Germany to Dunkirk, France

Cargo No details

Type of Casualty Allided with the moored *Arklow Breeze* in Brunsbüttel during manoeuvres. Both the *Arklow Breeze* and the pier suffered damage. The Master of the *Rix Emerald* was found to be intoxicated.

Type of Claim Allision damage claim

P&I No details / North of England



Miracle

Yacht, No other details

Date of Casualty 2 June 2016

Type of Casualty Suffered an explosion and fire 50 miles off Shetland. The crew of nine abandoned the vessel and were rescued by the offshore vessel *REM Gambler*.

Type of Claim Total loss claim

[Further casualties overleaf](#)

Lady Adèle

General cargo vessel, IMO 9624859, Built 2015, 3,694 dwt

Date of Casualty 2 June 2016

Voyage Loviisa, Finland to Nantes, France

Cargo Sawn timber

Type of Casualty Suffered mechanical problems off Brest. Tug *Abeille Bourbon* was dispatched to assist and took the vessel in tow.

Type of Claim Possible salvage claim and/or General Average declaration

P&I No details



Calumet

Bulk carrier, IMO 7329314, Built 1973, 19,800 dwt

Date of Casualty 3 June 2016

Voyage Cleveland to Toledo, USA

Cargo No details

Type of Casualty Allided with a dock on the Cuyahoga river, Cleveland, Lake Erie

Type of Claim Allision damage claim

P&I North of England

Roose + Partners

NEW CASUALTIES - Continued - edition 167

Urbegi

Fishing vessel, No other details

Date of Casualty 3 June 2016

Type of Casualty Suffered water ingress 43 nm off the Spanish Atlantic coast. The crew were evacuated and salvors tried to tow the vessel into the port of Camariñas but she sank 15 nm off Finisterre.

Type of Claim Total loss claim



Bukit Raya

Passenger cruise vessel, IMO 9032173, Built 1994, 1,408 dwt

Date of Casualty 3 June 2016

Type of Casualty Ran aground off Jungkat, Pontianak in Indonesia. The vessel was refloated on 6 June.

Type of Claim Hull damage and salvage claim

Ortelius

Passenger cruise ship, IMO 8509181, Built 1989, 804 dwt

Date of Casualty 3 June 2016

Type of Casualty Suffered engine failure whilst near the Svalbard Archipelago, Norway. The vessel had 146 people on board. A tug was dispatched to assist.

Type of Claim Possible salvage type claim
P&I Shipowners Club

Slingeborg

Ro-ro, IMO 9188245, Built 2000, 13,000 dwt

Date of Casualty 4 June 2016

Voyage Zeebrugge, Belgium to Gothenburg, Sweden

Cargo No details

Type of Casualty Loss of rudder. Vessel was towed back to Zeebrugge.

Type of Claim Possible General Average declaration

P&I Standard Club

Kompozitor Rakhmaninov

Ro-ro, IMO 8606616, Built 1986, 4,673 dwt

Date of Casualty 4 June 2016

Voyage Olya, Russia to Bandar Anzali, Iran
Cargo 500 m/t of general cargo

Type of Casualty Ran aground on the Volga-Caspian Sea Canal. The vessel was refloated and resumed her voyage.

Type of Claim Possible hull damage and salvage claim

Volgoneft 247

Product tanker, IMO 8727991, Built 1975, 4,743 dwt

Date of Casualty 5 June 2016

Voyage Volgograd to Kavkaz, Russia

Cargo 4,500 tons of heavy fuel

Type of Casualty Suffered cracks in her hull and water ingress whilst on the river Don.

Type of Claim Possible General Average declaration

Kolin 7

Bunkering tanker, IMO 9083366, Built 1994, 3,857 dwt

Date of Casualty 5 June 2016

Voyage Bozcaada to Kepez, Turkey

Cargo 3,000 m/t waste fuel



Burnu, Bozcaada, Turkey. The vessel was refloated with tug assistance.

Type of Claim Possible hull damage and salvage type claim

P&I Standard Club

Vilyuchinskiy

Fish factory, IMO 8901444, Built 1990, 1,074 dwt

Date of Casualty 6 June 2016

Type of Casualty Suffered an explosion whilst in Avacha Bay, Kamchatka Peninsula. One crew member died.

Type of Claim Damage and loss of life claim

Insel Hiddensee

River cruise ship

Date of Casualty 6 June 2016

Type of Casualty Suffered an engine failure whilst mooring in Neuendorf. The vessel slammed into the quay and 9 of the 130 passengers on board were injured.

Type of Claim Allision damage and passenger claims

Brienersee

Tank barge, Built 1970, 2,489 gt

Date of Casualty 6 June 2016

Voyage Millingen to Rotterdam, Netherlands

Cargo 2,354 m/s of gas oil

Type of Casualty Disabled and grounded on the Rhine at St Goar. The vessel was refloated by tugs and towed into Loreley Port.

Type of Claim Possible salvage claim and/or General Average declaration

Bannweide

Self-propelled barge, Built 1926, 1,175 gt

Date of Casualty 6 June 2016

Voyage No details

Cargo Gravel

Type of Casualty Caught fire on the Rhine.

Type of Claim Fire damage claim


Jörn - H 4038/Irma II - 8H 3055

Jörn - H 4038 - Tug, Built 1926

Irma II - 8H 3055 - Launch, Built 1959

Date of Casualty 7 June 2016

Type of Casualty The tug collided with the launch which was carrying 50 passengers, 15 of who were injured. The

Access all our previous casualty newsletters here 

LOF NEWS

Johannes Wuulf - edition 166 - T&T Salvage LLC and Raul A Negro & Cia SA were contracted to salvage the vessel and her sloyd bean meal cargo under the Lloyd's Open Form contract.

collision was on the Elbe in Hamburg.

Type of Claim Collision damage and passenger claims

Corentine

Fishing vessel, No other details

Date of Casualty 7 June 2016

Type of Casualty Ran aground near Fleetwood Docks. The master was found to be intoxicated.

Type of Claim Possible damage and salvage claim

Heji 609

Ro-ro, No other details

Date of Casualty 6 June 2016

Type of Casualty Struck a rock near Chongqing on the Yangtze River. The vessel, carrying 40 vehicles, 68 passengers and 20 crew members, suffered water ingress.

Type of Claim Hull damage and salvage claim

Zeytinburnu

Ro-ro, IMO 8619857, Built 1989, 376 dwt

Date of Casualty 7 June 2016

Type of Casualty Allided with Sirkeci ferry terminal. The vessel was damaged and two passengers injured.

Type of Claim Allision damage and passenger claims

P&I RaetsMarine BV

Mellum

Support vessel, IMO 8301981, Built 1984, 1,332 dwt

Date of Casualty 7 June 2016

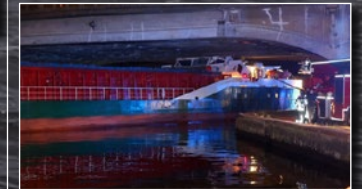
Type of Casualty Fire during welding works caused significant damage to the accommodation.

Type of Claim Fire damage claim

CASUALTY FOLLOW-UP



Noorderlicht - edition 166 - the sailing clipping was refloated with the high tide on 1 June 2016 by salvors. The proceeded to Harlingen arriving the same evening. Her passengers, 26 children and three teachers continued their voyage on another ship.



Safmarine Meru - editions 163 & 164 - we understand that property owners are facing a salvage claim by Donghai Rescue Bureau and are now required to provide salvage security in addition to the General Average security required by the vessel owners. Richards Hogg Lindley have been appointed to collect the salvage security and are in the process of notifying all property interests in respect of this new development. Roose+Partners are representing part cargo interests in this matter. Reports advise that the damage to the vessel is considerable and that repairs are not economically feasible. As such owners are looking at scrapping ports.

Siteam Anja - editions 165 & 166 - was refloated on 5 June and towed to an anchorage in the Delta area south of Piräpolis. Salvors are waiting for the weather to improve to transfer the remaining 20,000 m/t of soybean oil.

Amadeus Amethyst - edition 166 - reports suggest the vessel suffered a technical malfunction which caused the allision.

Roger Blough - edition 166 - the bulk carrier was refloated on 4 June after partial lightening of cargo. She proceeded under her own power to Waiska Bay anchorage in the afternoon where her remaining iron ore cargo was offloaded onto the Philip R. Clarke and Arthur M. Anderson which will take the cargo to destination. A detailed damage assessment of the *Roger Blough* will be conducted once weather conditions improve.

