

Roose + Partners

Casualty Newsletter 188

2nd November 2016

FEATURE CASUALTY

Australis/Zhelingyou 91002

Australis - Crude oil tanker, IMO9284946, Built 2003, 299,095 dwt

Zhelingyou 91002 - Fishing vessel, **Date of Casualty** 28 October 2016

Voyage Ningbo, China to Singapore

Cargo Crude oil

Type of Casualty Collision

Type of Claim Collision damage and loss of life claims

P&I UK Club

At around 2200 hours on 28 October 2016, the 2003 built crude oil tanker *Australis* collided with the Chinese fishing vessel *Zhelingyou 91002* in the East China Sea some 50 nm south of Zhoushan, China.

The very large crude carrier had departed the port of Ningbo bound for Singapore and was off the coast of Taizhou when the fishing vessel crossed her route. At the time of the collision there was a moderate sea and the

visibility was described as bad. The tanker was unable to manoeuvre to avoid the trawler and the two vessels collided. The *Zhelingyou 91002* suffered water ingress, capsized and sank. Her crew of six were reported to have fallen into the sea and are missing.

The Taizhou city Maritime Rescue Centre immediately organized a large scale search and rescue operation. Navy ships were deployed along with helicopters and other merchant vessels in the vicinity were asked to divert to assist with the search and rescue. Strong winds and poor visibility hampered the rescue efforts. A team of divers were later sent to search the wreck of the *Zhelingyou 91002* in an effort to try and locate the bodies of the crew and also to assist with the investigation into the accident.

The VLCC *Australis* is reported to have continued sailing south but then proceeded to Wenzhou. She was subsequently detained at the Yu Huan Anchorage off Wenzhou pending completion of the investigation.

NEW CASUALTIES

CPO England

Combined chemical and oil tanker, IMO 9353149, Built 2009, 37,296 dwt
Date of Casualty 25 October 2016 - Late notification

Voyage Origin: Antwerp, Belgium to Ust-Luga, Russia

Cargo Oil

Type of Casualty Suffered a rudder failure whilst transiting the Kiel Canal and ran into the embankment and a berth causing a passenger to overboard.

Type of Claim Allision damage and passenger claims

P&I Steamship Mutual



Ocean Ranger

Tug, IMO 9010656, Built 1990, 333 dwt
Date of Casualty 26 October 2016

Voyage Seattle, USA to Mexico, Mexico
Cargo Floating dock

Type of Casualty A floating dock under tow of the tug suffered water

ingress and sank 40 nm west of San Francisco, USA.

Type of Claim Total loss claim



Mira Daruda

Self-propelled barge, 1,153 ts

Date of Casualty 27 October 2016

Voyage Driel to Hengelo, Netherlands

Cargo No details

Type of Casualty Collided with cable of the Culemborg-Schalkwyk ferry.

Type of Claim Collision damage claim

Alaad

General cargo vessel, IMO 9574999, Built 2010, 9,000 dwt

Date of Casualty 27 October 2016

Voyage Jeddah, Saudi Arabia to Liepaja, Latvia

Cargo No details

Type of Casualty Suffered an engine breakdown when entering the Kiel Canal locks at Holttenau and allided with the lock pier.

Type of Claim Allision damage claim
P&I Hydor AS



Yu Feng 32

Fishing vessel, 23 gt

Date of Casualty 28 October 2016

Type of Casualty Caught fire 2 nm off New Taipei, Taiwan. The crew evacuated safely to another fishing vessel. The Coast Guard attended, extinguished the fire and towed the vessel to New Taipei.

Type of Claim Fire damage and salvage claim

Further casualties overleaf ▶

Pavino

Combined chemical and oil tanker, IMO 9310381, Built 2005, 5,706 dwt

Date of Casualty 28 October 2016

Voyage Bering Sea to Vladivostok, Russia
Cargo In ballast

Type of Casualty Suffered a loss of propulsion in the Sea of Okhotsk. Salvage tug Atlas was dispatched to tow the vessel to the Port of Korsakov.

Type of Claim Salvage claim

Victoria 1

Fishing vessel, IMO 8901559, Built 1992, 1,258 dwt

Date of Casualty 28 October 2016

Type of Casualty Ran aground entering Mar del Plata port, Argentina. The trawler was refloated with tug assistance.

Type of Claim Possible hull damage and salvage claim



Roose + Partners

NEW CASUALTIES - Continued - edition 188

Almak

Trawler, IMO 9214410, Built 2001, 1,100 dwt

Date of Casualty 28 October 2016

Type of Casualty Ran aground at Tomasjordnes in Tromsø. The trawler was refloated with tug assistance.

Type of Claim Possible hull damage and salvage claim



Strand

Passenger ro-ro, IMO 8112639, Built 1982, 446 dwt

Date of Casualty 29 October 2016

Type of Casualty Suffered a fire whilst in dry-dock Rubbestadneset, Bomlo, Norway. The vessel suffered considerable damage and is likely to be a constructive total loss.

Type of Claim Fire damage/possible total loss

Rhino

General cargo vessel, IMO 7616860, Built 1979, 3,340 dwt

Date of Casualty 29 October 2016

Voyage Perama to Nisyros, Greece

Cargo No details

Type of Casualty Suffered engine failure 1nm off Piraeus. Tug *Armadores* towed the vessel back to Piraeus.

Type of Claim Possible salvage claim and/or General Average declaration

P&I Lodestar Marine

BBC Asia

General cargo vessel, IMO 9266310, Built 2003, 7,541 dwt

Date of Casualty 30 October 2016

Voyage At Kobe

Cargo Pipes

Type of Casualty The cargo shifted during loading operations and two crew members were killed, one seriously injured.

Type of Claim Loss of life/crew claims

P&I Gard

Bratsk/Suadiye

Bratsk - General cargo vessel, IMO 8888070, Built 1981, 3,233 dwt

Suadiye - General cargo vessel, IMO 8955524, Built 1983, 319 dwt

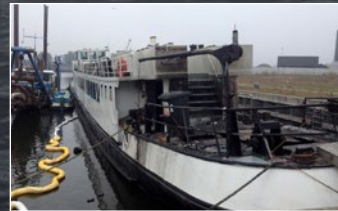
Date of Casualty 30 October 2016

Voyage Trabzon, Turkey to Azov, Russia / Rostov to Azov, Russia

Cargo No details

Type of Casualty The *Suadiye* contacted the *Bratsk* during berthing operations at Azov.

Type of Claim Collision damage claim



MPS Element

Accommodation ship, Built 1902, 141 gt

Date of Casualty 31 October 2016

Type of Casualty Suffered a fire whilst at Lorentz port, Netherlands. The ship was heavily damaged.

Type of Claim Fire damage and passenger claims

Maersk Patras

Fully cellular containership, IMO 9168221, Built 1998, 37,842 dwt

Date of Casualty 1 November 2016



Voyage Algeciras, Spain to Conakry, Ireland

Cargo General containerised cargo

Type of Casualty Suffered an engine fire which disabled the vessel.

Tug *Salvanguard* has been contracted to assist. The towage connection was made fast in the early hours of this morning and the tow is proceeding to Las Palmas.

Type of Claim Fire damage, possible salvage claim and/or General Average declaration

P&I Britannia Club



Dewaruci Perkasa/Dolphin Nusantara 2/ Trijaya

Dewaruci Perkasa - General cargo vessel, IMO 8624967, Built 1985, 688 dwt

Dolphin Nusantara 2 - General cargo vessel, IMO 9114012, Built 1995, 1,300 dwt

Trijaya - General cargo vessel, No other details

Date of Casualty 1 November 2016

Voyage Gresik, Indonesia to unknown destination / No details for the other vessels

Cargo 1,000 m/t of cement / No details for the other vessels


Type of Casualty The *KM Dewaruci Perkasa* struck the two anchored vessels whilst departing Gresik and sank with the loss of four of her crew.

Type of Claim Total loss, wreck removal and loss of life claims

Trans Future 1

Vehicle carrier, IMO 9176216, Built 1998, 9,287 dwt



Access all our previous casualty newsletters here 

LOF NEWS

United Ocean

General cargo with container capacity, IMO 9071052, Built 1994, 4,766 dwt

Date of Casualty 30 October 2016

Voyage Misurata, Libya to Algiers, Algeria

Cargo 3,075 m/t scrap metal

Type of Casualty Suffered a fire in her engine-room and accommodation block in the Mediterranean Sea about 100 miles northeast of Misurata. An Italian Naval vessel provided assistance with the extinguishing efforts. A LOF salvage contract has been agreed with Slem Meling Offshore DA who operate the *PSV Slem Pilot* which was engaged in Frontex operations in the area. The *United Ocean* is now at anchor in Malta.

Type of Claim Fire damage and LOF salvage claim

Date of Casualty 1 November 2016

Voyage Hakata, Japan to Pyeongtaek, South Korea

Cargo No details

Type of Casualty Collided with a trawler west of Pyeongtaek in the Yellow Sea. The trawler capsized and sank. Her crew were rescued by another fishing vessel.

Type of Claim Collision claim

P&I Japan Shipowners



Bakul

Tourist fishing boat, No other details

Date of Casualty 1 November 2016

Type of Casualty Ran aground on rocks off near Cape Školjić, Croatia. Two people on board were injured.

Type of Claim Hull damage and injury claims

CASUALTY FOLLOW-UP



Waasmunster - edition 173 - repairs of damage suffered in the collision with the fishing vessel *Gros Lolou CN 721860* have been completed in Flushing. The vessel departed for Karsto on 29 October 2016.

Saffet Bey - editions 180 & 181 - repairs to the grounding damage have been completed in Tuzla.

Nathan E. Stewart - editions 186 & 187 - Members of the Heiltsuk First Nation have expressed concern regarding the environmental damage caused by the bunkers from the grounded articulated tug. Some 105,000 litres of fuel and nearly 5,000 litres of lubricants are estimated to have leaked from the tug. According to the Heiltsuk First Nation community representative a dead humpback whale,

seals, crabs, and a sea otter have been reported to have been found dead over the last week in the area. Poor weather conditions continue to hamper the containment operation with booms being blown out of position. Another storm is forecast for the area which is expected to delay the salvage operation.

Silver Sky - edition 187 - the vessel is expected to be declared a total loss following the fire which occurred at the port of Antwerp on 20 October 2016.

KM Lambelu - edition 187 - was refloated on 26 October by the Indonesian National Shipping (Pelni) authority jointly with the Port of Tarakan authorities. The vessel was inspected and no grounding damage was found.