

FEATURE CASUALTY

Navemar-XII

General cargo vessel, 150 gt, No other details

Date of Casualty 12 November 2016

Voyage Recife to Fernando de Noronha, Brazil

Cargo Construction materials and a vehicle

Type of Casualty Sinking

Type of Claim Total loss and cargo loss

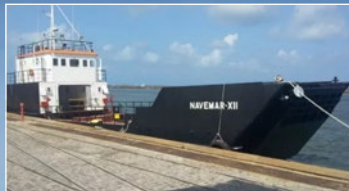
Shortly after departing the port of Recife on 12 November 2016 the general cargo vessel *Navemar-XII* struck a reef near the Lighthouse at Olinda, Brazil and later sank. According to local reports there are several reefs in the area which are as yet uncharted.

The *Navemar-XII* was en route to the Brazilian island of Fernando de Noronha loaded with a cargo of construction materials and a police department vehicle. The vessel had just left the traffic separation scheme when she contacted the underwater reef in a position some seven miles from Recife. The vessel suffered significant damage to her hull in the accident and began taking on water. The crew were unable to control the water ingress and the coastal freighter began to lose stability.

The Master was able to send a distress signal before the vessel capsized. Her keel remained above the water. A local rescue boat was dispatched and picked up the six man crew from the sea.

The wreck is being monitored by the local authorities and a salvage/wreck removal operation is being contemplated. An investigation into the accident is being conducted by the Brazilian Navy.

The vessel had only recently been purchased at a cost of three million Reals (USD875,000). It has capacity to carry 150 m/t of cargo. Her owners Universo are responsible for urban cleaning on the island of Fernando de Noronha and are contracted to complete a series of works for the State Government. Much of the cargo was construction material for the renovations of the Family Health Post, Bem-Me-Quer Integrated Centre and Archipelago School block. Fernando de Noronha is an archipelago of 21 islands and islets in the Atlantic Ocean located 354 km from the Brazilian mainland.



NEW CASUALTIES



New Lucky III

General cargo vessel, IMO 9228277, Built 2000, 7,716 dwt

Date of Casualty 8 November 2016 – Late Notification

Voyage Osaka, Japan to Zhangjiagang, China

Cargo No details

Type of Casualty Suffered engine failure in the Yellow Sea southeast of Shanghai, China. East China Sea Rescue ship *Donghaiju 102* towed the vessel to an anchorage south off Zhoushan for repairs.

Type of Claim Possible salvage claim and/or General Average declaration

P&I Japan Shipowners

Maersk Newhaven

Fully cellular containership, IMO 9215880, Built 2001, 34,677 dwt

Date of Casualty 8 November 2016 – Late Notification

Voyage Bremerhaven, Germany to Mariel, Cuba

Cargo General containerised cargo

Type of Casualty Suffered flooding into No. 3 cargo hold.

Type of Claim Cargo damage

P&I Britannia Club



Victory Prima/Jaya II

Victory Prima – Edible oil tanker, IMO 8126082, Built 1982, 5,989 dwt

Jaya II – Fishing vessel, No other details

Date of Casualty 9 November 2016

Voyage Belawan to Dumai, India

Cargo In ballast

Type of Casualty Collision in the Malacca Strait. The *Jaya II* sank and one of her four crew on board was lost. The fishermen advised later their vessel suffered rudder failure.

Type of Claim Collision and loss of life claims

Mina 1

General cargo vessel, IMO 8951229, Built 1970, 2,182 dwt

Date of Casualty 9 November 2016

Voyage In lay up

Cargo In ballast

Type of Casualty Dragged at anchor and grounded at Maltepe port, Turkey. Coastal Safety tugs refloated the vessel. Click [here](#) for video.

Type of Claim Hull damage and salvage claim

P&I RaetsMarine BV

Cap Salines

Fishing vessel, Built 2001, 103 gt

Date of Casualty 9 November 2016

Type of Casualty Disabled in stormy weather 12 miles south of Cala Figuera lighthouse. The *Salvamar Acrux* towed the vessel into Palma.

Type of Claim Possible salvage claim

Adnan H/Tanais Dream

Adnan H – General cargo vessel with container capacity, IMO 8215649, Built 1983, 2,852 dwt

Tanais Dream – Bulk carrier, IMO 9283899, Built 2003, 28,611

Date of Casualty 10 November 2016

Voyage Tekirdag, Turkey to Constantza, Romania / Koper, Slovenia to Berdiansk, Ukraine

Cargo Both in ballast

Type of Casualty Collision at the Istanbul anchorage.

Type of Claim Collision damage claim

P&I Lodestar Marine / West of England

M-27-H

Fishing vessel, No other details

Date of Casualty 10 November 2016

Type of Casualty Caught fire off Dryna, Norway

Type of Claim Fire damage claim



[Further casualties overleaf](#)

Sormovskiy 3058

General cargo vessel, IMO 8419647, Built 1987, 3,853 dwt

Date of Casualty 10 November 2016

Voyage Laptevskina, Russia to Bremerhaven, Germany

Cargo 2,249 m/t of timber

Type of Casualty Ran aground whilst transiting the Volgo-Balt Canal. The vessel was refloated with tug assistance.

Type of Claim Possible salvage claim and/or General Average declaration

P&I Standard Club



Grip Solar

Water tanker, IMO 8985414, Built 1965, 79 dwt

Date of Casualty 10 November 2016

Voyage Tromso to Harstad, Norway

Cargo No details

Type of Casualty Ran aground on rocks between Bjarkoy and Sandsoya.

Type of Claim Possible salvage claim

Midvolga-3

Chemical/oil tanker, IMO 9735141, Built 2014, 6,573 dwt

Date of Casualty 10 November 2016

Voyage Vysotsk to Kaliningrad, Russia

Cargo 3,400 m/t of heavy fuel

Type of Casualty Sustained an engine blackout in the Kaliningrad Sea Canal and grounded. The vessel refloated by her own means but was found to have sustained water ingress on arrival at Kaliningrad.

Type of Claim Hull damage claim

Roose + Partners

NEW CASUALTIES - Continued - edition (190)

Hayat S

Water tanker, 141 gt, No other details

Date of Casualty 10 November 2016

Voyage Yalova Kirazlı to Ekihisar Demir Bölgesi, Turkey

Cargo In ballast

Type of Casualty Suffered engine failure off Darica, Istanbul and was drifting close to shore. Coastal Safety tugs assisted.

Type of Claim Salvage fine and claim

Top Trader

Bulk carrier, IMO 9216963, Built 2001, 52,403 dwt

Date of Casualty 11 November 2016

Voyage Puerto La Cruz, Venezuela to Europe

Cargo Petroleum

Type of Casualty Fire in the cargo holds during loading operations at Jose Terminal in Puerto La Cruz, Venezuela.

Type of Claim Fire damage claim and possible General Average declaration

P&I Standard Club



Royal 16

General cargo vessel, IMO 9600011, Built 2011, 5,610 dwt

Date of Casualty 11 November 2016

Voyage Hai Phong, Vietnam to Indonesia

Cargo Cement

Type of Casualty Attacked by Abu Sayyaf terrorists off Sibago Island, Philippines. Six of the crew were kidnapped.

Type of Claim Kidnap & ransom

P&I West of England

Baraka

Fishing vessel, IMO 8103107, Built 1982, 1,200 dwt

Date of Casualty 11 November 2016

Type of Casualty Suffered water ingress and began sinking in the Atlantic Ocean off Western Africa. Tanker *Leonid Loza* (IMO 9412347) diverted and rescued the crew.

Type of Claim Total loss claim

P&I Britannia

Bonay

General cargo vessel, IMO 9033878, Built 1991, 1,891 dwt

Date of Casualty 12 November 2016

Voyage Portbury, UK to Rotterdam, Netherlands

Cargo In ballast

Type of Casualty Suffered technical failure 28 nm off St. Catherine's Point. A tug was contracted to assist the vessel.

Type of Claim Possible salvage type claim

P&I Standard Club

Heinrich Ehler

Fully cellular containership, IMO 9372200, Built 2008, 17,819 dwt

Date of Casualty 12 November 2016

Voyage Riga, Latvia to Hamburg, Germany

Cargo General containerised cargo

Type of Casualty Allided with a dolphin on the approach to the Kiel-Holtenua Lock in Germany.

Type of Claim Allision damage claim

P&I Hanseatic

Georgios Alexios/Antaeus

Georgios Alexios – General cargo vessel, IMO 9192624, Built 1999, 4,439 dwt

Antaeus – Fishing vessel, Built 1989, 74 gt

Date of Casualty 12 November 2016

Voyage Drogheda, Ireland to Antwerp, Belgium / n/a

Cargo No details

Type of Casualty Collision in the Saint-Georges Canal between the UK and Ireland. The fishing vessel suffered serious damage.

Type of Claim Collision damage claim

Nordic

General cargo vessel, IMO 9663001, Built 2013, 3,000 dwt

Date of Casualty 12 November 2016



Voyage Rostock to Bremen, Germany

Cargo No details

Type of Casualty Allided with a lock gate on the Kiel Canal.

Type of Claim Allision damage claim

P&I RaetsMarine BV



Krabben

Dive vessel, No other details

Date of Casualty 12 November 2016

Type of Casualty Suffered water ingress and sank north of Thyborøn. A fishing vessel rescued the crew.

Type of Claim Total loss claim



X-Press Etna

Fully cellular containership, IMO 9354349, Built 2006, 11,257 dwt

Date of Casualty 13 November 2016


Voyage Rotterdam, Netherlands to St Petersburg, Russia

Cargo General containerised cargo

Type of Casualty Ran aground in Rotterdam after suffering engine failure. The tugs *Multratug 16* and *Fairplay 23* attended and refloated the vessel with the rising tide.

Type of Claim Possible salvage claim and/or General Average declaration

P&I West of England

Access all our previous casualty newsletters here 

Taiko Maru/Asakaze No 5

Taiko Maru – Oil products tanker, IMO 9251119, Built 2001, 2,118 dwt

Asakaze No 5 – Ferry, IMO 9178692, Built 1998, 1,379 dwt

Date of Casualty 13 November 2016

Voyage Hakodate to Osaka, Japan

Cargo No details

Type of Casualty Collision in Hakodate Harbour, Japan.

Type of Claim Collision damage claim

Carnaby/Orca 2

Carnaby – General cargo vessel, IMO 8725644, Built 1985, 3,346 dwt

Orca 2 - Fully cellular containership, IMO, 8914544 Built 1991, 8,635 dwt

Date of Casualty 13 November 2016

Voyage Abu Kir, Egypt to Odessa, Ukraine / Alexandria, Egypt to Novorossiysk, Russia

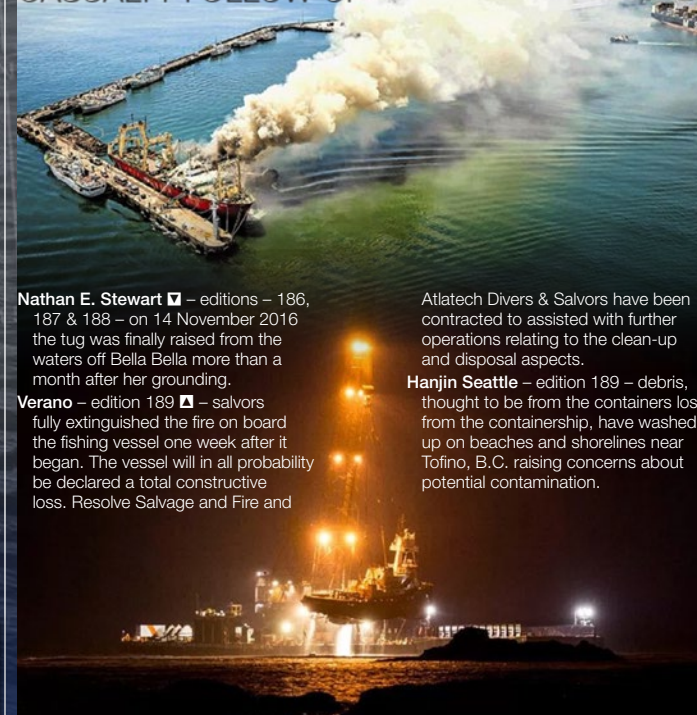
Cargo Both in ballast

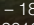
Type of Casualty Collision during manoeuvres at Istanbul anchorage.

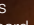
Type of Claim Collision damage claim



CASUALTY FOLLOW-UP



Nathan E. Stewart  – editions – 186, 187 & 188 – on 14 November 2016 the tug was finally raised from the waters off Bella Bella more than a month after her grounding.

Verano – edition 189  – salvors fully extinguished the fire on board the fishing vessel one week after it began. The vessel will in all probability be declared a total constructive loss. Resolve Salvage and Fire and

Atlatche Divers & Salvors have been contracted to assist with further operations relating to the clean-up and disposal aspects.

Hanjin Seattle – edition 189 – debris, thought to be from the containers lost from the containership, have washed up on beaches and shorelines near Tofino, B.C. raising concerns about potential contamination.

Casanova

General cargo vessel, IMO 7420948, Built 1975, 1,450 dwt

Date of Casualty 14 November 2016

Voyage In lay-up at Barranquilla, Colombia

Cargo None

Type of Casualty Suffered a fire in her engine room which spread to and engulfed the superstructure.

Type of Claim Fire damage claim

Dumai Line 3

Ferry, IMO 9724908, Built 2013, 259 gt

Date of Casualty 15 November 2016

Type of Casualty Ran aground on a beach of Pulau Pedang Island in the Malacca Strait. All passengers were evacuated.

Type of Claim Salvage claim

LOF NEWS

Minoan Courage

Bulk carrier, IMO 9288526, Built 2006, 76,801 dwt

Date of Casualty 18 October 2016 – Late Notification

Voyage Singapore to China

Cargo Soya beans

Type of Casualty Engine breakdown in the South China Sea. Tsaviris Salvage were contracted under an LOF Salvage Agreement. They dispatched a tug from Kaohsiung, Taiwan for escort/towage services but the casualty restored power and proceeded under her own power.

Type of Claim LOF salvage claim

P&I Gard