

### FEATURE CASUALTY

## Harvest Sky

Bulk carrier, IMO 9667332, Built 2013, 95,717 dwt

**Date of Casualty** 14 October 2017

**Voyage** Kaohsiung to Linkou, Taiwan

**Cargo** 19,068 m/t of coal

**Type of Casualty** Grounding

**Type of Claim** Hull damage and salvage claim

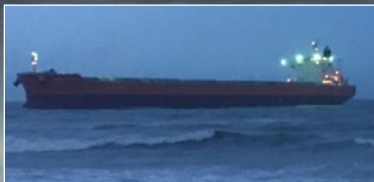
**P&I** Japan Club

At 0700 hours in the morning of 14 October 2017, the 2013 built bulk carrier *Harvest Sky* ran aground off the coast from the Linkou coal terminal in north west Taiwan.

The *Harvest Sky* had arrived at Linkou from Kaohsiung with a cargo of coal and was in the process of discharging its cargo when the weather at the port deteriorated. Concerned terminal operators ordered the Master to suspend the cargo discharge operation and leave the berth. The vessel left her berth in the evening of 13 October 2017 at 2058 hours with a local pilot on board. At 2155 her rudder and propeller became fouled by fishing nets

causing a loss of manoeuvrability. Her engine then overheated and failed leaving the bulk carrier without power. In the gales and strong currents the *Harvest Sky* was pushed aground in a position 1.9 nm from the terminal. At the time of the grounding the vessel was carrying 19,068 m/t of coal, as well as 1,377 m/t of fuel oil and 184 m/t of diesel.

The owners of the vessel appointed Nippon Salvage to assist in refloating the vessel. The salvage team arrived on site on 15 October 2017 but were prevented from carrying out a survey of the vessel due to the continuing bad weather. The salvors tug *Koyo Maru* arrived at Linkou in the evening of 16 October 2017. Weather conditions remain poor and have hampered the salvors efforts to connect a line to the *Harvest Sky*. Refloating operations will commence when the weather has improved.



### NEW CASUALTIES



#### Eden Bay/Mazury

*Eden Bay* - Bulk carrier, IMO 9445203, Built 2008, 28,342 dwt

*Mazury* - Bulk carrier, IMO 9285122, Built 2005, 37,715 dwt

**Date of Casualty** 11 October 2017

**Voyage** Macapa to Manaus, Brazil / Macapa to Itacoatiara, Brazil

**Cargo** Wheat / Fertilizer

**Type of Casualty** The vessels were in collision on the Amazon river of Fazendinha beach, Macapa. Click [here](#) for video.

**Type of Claim** Collision damage claim

**P&I** West of England / Gard

#### SBI Carioca

Bulk carrier, IMO 9719549, Built 2015, 81,262 dwt

**Date of Casualty** 11 October 2017

**Voyage** Norfolk, USA to Belledune, Canada

**Cargo** 65,000 m/t of petroleum coke

**Type of Casualty** Grounded in the Gulf of St. Lawrence near Belledune, New Brunswick. The vessel was refloated with assistance on the same day.

**Type of Claim** Possible hull damage and salvage type claim

**P&I** Steamship Mutual

#### Conquistador

Bulk carrier, IMO 9724635, Built 2016, 107,665 dwt

**Date of Casualty** 12 October 2017

**Voyage** Roberts Bank, Canada to Yuzhnyi Port, Ukraine

**Cargo** Coal

**Type of Casualty** Allided with a berth at Yuzhnyi during mooring operations.

**Type of Claim** Allision damage claim

**P&I** Gard



#### Moon Dance

Yacht, No other details

**Date of Casualty** 12 October 2017

**Type of Casualty** Stranded off Monterey.

The *MSC Julie* diverted and stood by until the arrival of the Coast Guard. The vessel was then towed closer to shore and handed over to a tug from Vessel Assist.

**Type of Claim** Possible salvage claim

#### Maersk Enshi

Fully cellular containership, IMO 9502946, Built 2012, 140,973 dwt

**Date of Casualty** 12 October 2017

**Voyage** Shanghai, China to Oakland, USA

**Cargo** General containerised cargo

**Type of Casualty** Collided with an unnamed fishing vessel south of Shanghai, near Taizhou. The vessel was sailing on the transpacific portion of the 2M Alliance TP2 service. Four of the fishing crew were reported missing.

**Type of Claim** Collision damage claim

**P&I** Japan Club

#### Pacific Paradise

Fishing vessel, No other details

**Date of Casualty** 13 October 2017

**Type of Casualty** Grounded on a reef off Kaimana Beach in Waikiki. During salvage operations a fire broke out when fuel from a dewatering pump splashed onto the leaked onto hot surfaces.

**Type of Claim** Hull damage, fire damage and salvage claim



Further casualties overleaf



#### Emerald Star

Bulk carrier, IMO 9449261, Built 2010, 57,367 dwt

**Date of Casualty** 13 October 2017

**Voyage** Buli, Indonesia to Lianyungang, China

**Cargo** Nickel ore

**Type of Casualty** Sank off the Philippine coast east of the Luzon Strait during poor weather during tropical storm Odette. 16 crew members were rescued but 10 remain unaccounted for.

**Type of Claim** Total loss and loss of life claims

**P&I** North of England

#### Sabuk Nusantara 33

Passenger vessel, IMO 9675028, Built 2013, 446 dwt

**Date of Casualty** 13 October 2017

**Type of Casualty** Collided with four patrol boats of the Indonesian National Armed Forces off Slamet Riyadi Port, Indonesia following a loss of steering.

**Type of Claim** Collision damage claim

# Roose + Partners

NEW CASUALTIES - Continued - edition (238)



## Lienhe 36 ▣

General cargo vessel, 499 gt

**Date of Casualty** 13 October 2017

**Voyage** No details

**Cargo** In ballast

**Type of Casualty** Drifted into a breakwater near the fishing port Changhuaime, Taipei during storms. The following day diesel and oil residues were drained from the vessel. On 15 October 2017 a fire broke out in the accommodation block.

**Type of Claim** Salvage/wreck removal operation



## Poolzee ▣

Self-propelled barge, 3,517 ts

**Date of Casualty** 15 October 2017

**Voyage** Nieuwegein to Amsterdam, Netherlands

**Cargo** No details

**Type of Casualty** The barge struck the moored passenger vessels *Angela Esmee* and *Anna Maria Agnes* which were moored alongside at the Sumatra Quay in Amsterdam

**Type of Claim** Collision damage claim

## Oliver Hazard Perry ▣

Tall ship, IMO 8775560, Built 2015, 550 dwt

**Date of Casualty** 15 October 2017

**Type of Casualty** Lost power and drifted into a number of recreational vessels before running aground in Newport Harbour, Rhode Island, USA. The three masted tall ship is the largest civilian Sailing School Vessel in the United States.

**Type of Claim** Collision and hull damage claim



## Bornholm ▣

General cargo vessel, IMO 9350460, Built 2007, 2,443 dwt

**Date of Casualty** 15 October 2017

**Voyage** Liepaja, Latvia Norway to Randers, Denmark

**Cargo** Rocks

**Type of Casualty** Ran aground approaching Randers at the entrance of the Kareholm canal. After a diving inspection the vessel was refloated with the assistance of the Danish naval vessel *MHV Saboteuren* and towed into Randers.

**Type of Claim** Possible hull damage and salvage claim

**P&I** Hanseatic

## Pilatus 44 ▣

LPG carrier, IMO 9066502, Built 1993, 948 dwt

**Date of Casualty** 15 October 2017

**Voyage** Bangkok to Sriracha, Thailand

**Cargo** No details

**Type of Casualty** Collided with a unnamed fishing vessel in the Gulf of Siam, Thailand. The fishing vessel capsized but stayed afloat and was later towed to the coast. All her crew were rescued.

**Type of Claim** Collision damage claim

**P&I** Carina

## Mt. Guraab

Product tanker, IMO 8221961, Built 1983, 1,907 dwt

**Date of Casualty** 16 October 2017

**Voyage** Sh. Milandhoo to Male

**Cargo** Petroleum

**Type of Casualty** Ran aground on a reef near Felivaru island in the Lhaviyani Atoll, Maldives.

**Type of Claim** Possible hull damage, salvage claim and/or General Average declaration

## Ostborg

General cargo vessel with container capacity, IMO 9196216, Built 2001, 3,780 dwt

**Date of Casualty** 16 October 2017

**Voyage** Brunsbuttel, Germany to Nantes, France

**Cargo** 2,000 m<sup>3</sup> of wood

**Type of Casualty** Suffered turbocharger issues 40nm off Ymuiden. A tug was dispatched from Rotterdam to tow the vessel to a port of refuge.

**Type of Claim** Salvage claim and/or General Average declaration

**P&I** Lodestar Marine



## Quan Hai 88 ▣

General cargo vessel, 5,393 gt

**Date of Casualty** 16 October 2017

**Voyage** Dongguan to Jiaxing, China

**Cargo** No details

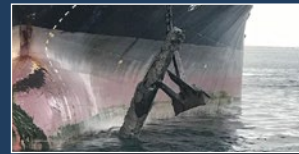
**Type of Casualty** Struck rocks in the Taiwan Strait and began sinking. The crew were rescued.

**Type of Claim** Hull damage and salvage claim

Access all our previous casualty newsletters here

## IN OTHER NEWS

On 14 October 2017 the crew of the tanker *Skaw Provider* hauled up the vessel's anchor only to find they had hooked a torpedo. The vessel had been anchored off Portland, UK. Navy divers were called to assist in removing the missile. Most of the crew were evacuated from the vessel before the operation commenced and cargo was transferred further aft to reduce any risk of explosion. The operation was completed after seven hours when the torpedo was destroyed.



## Wendy Dua

Self-propelled barge, 1,932 ts

**Date of Casualty** 17 October 2017

**Voyage** Emden, Germany to Zwartsluis, Netherlands

**Cargo** None

**Type of Casualty** Allided with the Tafel Bridge between Noordhorn and Zuidhorn on the Van Starckenborgh canal.

**Type of Claim** Allision damage claim

## Shin Hwa

General cargo vessel, No other details

**Date of Casualty** 17 October 2017

**Voyage** No details

**Cargo** No details

**Type of Casualty** Suffered engine failure in the Taiwan Strait, 60 nm northwest of Taipei, Taiwan.

**Type of Claim** Possible salvage claim

## Ming An

General cargo vessel, IMO 8787446, Built 2003, 3,500 dwt

**Date of Casualty** 18 October 2017

**Voyage** Kaohsiung, Taiwan to Vietnam

**Cargo** General containerised cargo

**Type of Casualty** Reported to be sinking in the Taiwan Strait 36 nm west of Kaohsiung, Taiwan. The crew abandoned the vessel into life rafts.

**Type of Claim** Total loss claim

## CASUALTY FOLLOW-UP



**Panagia Parou** ▣ - edition 213 - on 12 October 2017 salvors Ardentia Marine refloated the vessel which sank in April 2017 whilst at berth 9 in the Port of Algeiras. The vessel had been at the port since March 2013 having been abandoned by its owner.

**Melite** - editions 226 - the bulk carrier which ran aground off Pulau Laut on 21 July 2017 and was the subject of LOF salvage services is to be sold for demolition on an 'as is, where is' basis. The vessel owners have submitted a notice of abandonment to the hull and machinery underwriters.

**Maritime Newanda** - editions 237 - the vessel, which broke from her mooring in strong winds at the port of Durban, South Africa on 10 October 2017 was recovered by port tugs before running aground, contrary to earlier reports.

**MSC Ines** ▣ - edition 237 - the containership's voyage will be delayed after the vessel suffered serious damage to her rudder after coming free from her moorings during storms in Durban last week.



**Goeast** ▣ - edition 237 - the tanker is reported to be safe at anchor in Malta and did not sink after coming under shell fire from the Libyan Coast Guard.

