

### FEATURE CASUALTY

## Akacia

Fully cellular containership, IMO 9315020, Built 2004, 13,713 dwt

**Date of Casualty** 19 February 2018

**Voyage** Bremerhaven, Germany to St. Petersburg, Russia

**Cargo** General containerised cargo

**Type of Casualty** Allision

**Type of Claim** Allision damage and possible General Average declaration

**P&I** Skuld

The 2004 built containership *Akacia* allided with the Great Northern Lock of the Kiel Canal in Kiel-Holtenau, Germany on 19 February 2018 causing extensive damage to the structure and the vessel.

The *Akacia*, which was en route from Bremerhaven loaded with containerised cargo bound for St Petersburg, was proceeding at 10 knots, which is over the maximum allowable speed on the Canal, and was in the final leg of her transit of the Kiel Canal when she rammed into the lock gate at shortly before midnight on 19 February 2018. She had a river pilot on

board. It is thought she suffered a technical failure with her pitch propeller. The Master and Pilot are reported to have released both anchors in an effort to slow the vessel down but they were unable to prevent the *Akacia* striking the lock gate causing considerable damage to the structure, partially severing the gate from the lock wall. Her bow came to rest on the gate and the vessel began taking on water forward.

Representatives of the Kiel-Holtenau Waterway and Shipping Authority carried out an inspection of the gate shortly after dawn on 20 February 2018 and a diving inspection of the lock chamber was also carried out. The shipowners contracted a team from T&T Salvage to assist with recovery of the vessel from the chamber. At midday the tug *Wolf* arrived on site and divers began searching for the vessel's anchors. The vessel was pulled from the lock at 1530 hours on 20 February 2018 after de-ballasting. The cost of repairing damage to the lock is estimated to be several million Euros.

It is thought the cargo will have to be transhipped.

### NEW CASUALTIES

#### Century/Century II

*Century* – Self-propelled barge, 3,055 ts

*Century II* – Self-propelled barge, 2,439 ts

**Date of Casualty** 13 February 2018 – Late Notification

**Voyage** No details

**Cargo** Coal

**Type of Casualty** The *Century*, pushing the *Century II*, grounded on the Rhine at Gernersheim. The *Century II* required tug assistance to refloat the vessel.

**Type of Claim** Possible salvage claim

#### Delfi

Oil products tanker, IMO 8866266, Built 1977, 1,634 dwt

**Date of Casualty** 13 February 2018 – Late Notification

**Voyage** Russia, Ukraine to Moldova

**Cargo** Diesel

**Type of Casualty** Suffered water ingress into her engine room during poor weather 16 nm off Constanta in the Black Sea. The crew were unable to control the water ingress and the tanker was towed into Constanta.

**Type of Claim** Possible salvage claim and/or General Average declaration

#### Sharden

Passenger ro-ro, IMO 9305269, Built 2005, 7,031 dwt

**Date of Casualty** 14 February 2018

**Type of Casualty** Allided with the Colombo pier at Genoa during berthing manoeuvres. Both the ferry and pier suffered significant damage.

**Type of Claim** Allision damage claim  
**P&I** Standard Club

#### Blue Fish

Tug, IMO 8742094, Built 2005, 166 gt

**Date of Casualty** 14 February 2018

**Type of Casualty** Sank off Batakana,

Indonesia during poor weather. The tug was heading to Taboneo and was towing a barge which subsequently ran aground.

**Type of Claim** Total loss and salvage claim



#### Joseph Roty II

Fish factory, IMO 7362500, Built 1974, 1,595 dwt

**Date of Casualty** 15 February 2018

**Type of Casualty** Suffered engine failure 240 nm west of Killybeg. The vessel was taken in tow by the tug *Ocean Challenger* on 18 February 2018.

**Type of Claim** Salvage claim

#### Drujba/Dvadesetprvi Maj

*Drujba* – Passenger and cargo ro-ro, IMO 9031698, Built 1994, 7,330 dwt

*Dvadesetprvi Maj* – Bulk carrier, IMO 9582427, Built 2012, 34,987 dwt

**Date of Casualty** 15 February 2018

**Voyage** Batumi, Georgia to Bourgas, Bulgaria / Bourgas, Bulgaria to Tekirdag, Turkey

**Cargo** No details

**Type of Casualty** Collision at Bourgas.

**Type of Claim** Possible collision damage claim

**P&I** Shipowners Club / Gard

#### Ever Prosperity/Ef Elena

*Ever Prosperity* – General cargo vessel, IMO 9163520, Built 1997, 2,100 dwt

*Ef Elena* – Fully cellular containership, IMO 9368730, Built 2007, 17,350 dwt

**Date of Casualty** 15 February 2018

**Voyage** Gwangyang, South Korea to Oita, Japan / Tanoura, Japan to Busan, South Korea

**Cargo** No details

**Type of Casualty** Collision in Suo-Nada in the Seto Inland Sea. Both vessels proceeded to Oita for survey and investigation.

**Type of Claim** Collision damage claim

**P&I** No Details/ Steamship Mutual

#### Marshal Shaposhnikov

Russian Naval destroyer, Built 1985, 7,900 disp/t

**Date of Casualty** 16 February 2018

**Type of Casualty** Suffered a fire whilst in Vladivostok.

**Type of Claim** Fire damage claim

Further casualties overleaf ▶

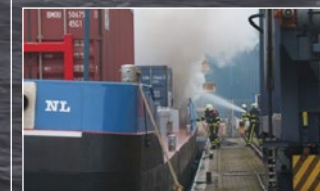
#### Danko

Fish factory, IMO 6929337, Built 1967, 1,460 dwt

**Date of Casualty** 16 February 2018

**Type of Casualty** Suffered a fire whilst under repair at Nakhodka.

**Type of Claim** Fire damage claim



#### Martie

Inland containership, No other details

**Date of Casualty** 17 February 2018

**Voyage** Overslagbedrijf to Waalwijk, Netherlands

**Cargo** Empty containers

**Type of Casualty** Suffered a fire in the accommodation whilst moored in Waalwijk.

**Type of Claim** Fire damage claim

#### Anthrazit

Self-propelled barge, 1,868 ts

**Date of Casualty** 17 February 2018

**Type of Casualty** Grounded on the Rhine near Duisburg. The vessel was unloaded.

**Type of Claim** Possible hull damage and salvage claim



# Roose + Partners

## NEW CASUALTIES - Continued - edition (256)

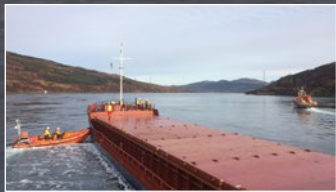
### Kristine Bonnevie

Research vessel, IMO 9062934, Built 1993, 500 dwt

**Date of Casualty** 17 February 2018

**Type of Casualty** Suffered engine failure 17 nm south of Fair Isle. The vessel was initially towed to Sletta off Haugesund by the Norwegian Coast Guard vessel *Bergen*.

**Type of Claim** Possible salvage claim



### CEG Universe

General cargo vessel, IMO 8709767, Built 1988, 1,275 dwt

**Date of Casualty** 18 February 2018

**Voyage** Unknown to Kyle, UK

**Cargo** Rock salt

**Type of Casualty** Suffered steering failure in the Kyle Rhea Strait between the Isle of Skye and Scottish mainland. The vessel tried to anchor but began dragging under the influence of the current. The Mallaig and Kyle lifeboats held the vessel until the tug *SD Kyle of Lochalsh* arrived and towed the vessel to Kyle Harbour with the assistance of the lifeboat.

**Type of Claim** Possible salvage claim

### Orca

General cargo vessel, IMO 8693097, Built 2008, 310 gt

**Date of Casualty** 18 February 2018

**Voyage** Guayaquil, Ecuador to Itabaca airport, Galapagos

**Cargo** Stones and asphalt

**Type of Casualty** Capsized during loading operations at the Caraguay Market Wharf,

Guayaquil. One crew member was trapped inside the vessel.

**Type of Claim** Salvage and loss of life claim

### Arklow Rival

General cargo vessel, IMO 9344514, Built 2006, 4,933 dwt

**Date of Casualty** 18 February 2018

**Voyage** Lisbon, Portugal to Sunderland, UK

**Cargo** 4,569 m<sup>3</sup> of cement

**Type of Casualty** Suffered gearbox failure in the English Channel 70 nm west of Guernsey. A sister ship *Arklow Rainbow* diverted and was able to move the vessel away from the heavily trafficked area whilst awaiting the arrival of a tug, the *Cannis*, which towed the vessel to Fowey. The tug *Abelle Bourbon*, based in Brest, was also sent by the French authorities.

**Type of Claim** Possible General Average claim

**P&I** North of England

### Robijn

General cargo vessel with container capacity, IMO 9423669, Built 2008, 3,619 dwt

**Date of Casualty** 18 February 2018

**Voyage** Hamina, Finland to Terneuzen, Netherlands

**Cargo** No details

**Type of Casualty** Suffered engine damage and was towed to the Lindenau-Yard in Kie-Friedrichsort for repairs.

**Type of Claim** Possible General Average declaration

### Passero

Vehicle carrier, IMO 9491886, Built 2012, 12,755 dwt

**Date of Casualty** 18 February 2018

**Voyage** Taicang, China to Yokohama, Japan

**Cargo** Vehicles

**Type of Casualty** Allied with structures arriving at Yokohama.

**Type of Claim** Possible allision damage claim  
**P&I** UK Club

### DD Vanguard

Bulk carrier, IMO 9357420, Built 2007, 26,479 dwt

**Date of Casualty** 18 February 2018

**Voyage** Tianjin, China to Wakayama, Japan

**Cargo** No details

**Type of Casualty** Suffered engine trouble and was adrift south of Shiono Misaki, in the Philippine Sea.

**Type of Claim** Possible salvage claim

**P&I** Japan Shipowners



### Hollandia

General cargo vessel, IMO 9374973, Built 2007, 12,016 dwt

**Date of Casualty** 19 February 2018

**Voyage** Oranjestad, Aruba to Mariel, St Maarten

**Cargo** General cargo

**Type of Casualty** A mobile crane fell into the vessel's hold piercing the tween deck.

**Type of Claim** Hull damage claim

**P&I** Standard Club

### KS - LS.289472

Fishing vessel, 10 gt

**Date of Casualty** 19 February 2018

**Type of Casualty** Suffered water ingress and sank 38 km southeast of the Sables-d'Olonne. The crew of two were rescued.


**Type of Claim** Total loss claim

### Carrier Express

Offshore supply tug, IMO 9134531, Built 1996, 4,250 dwt

**Date of Casualty** 20 February 2018

**Type of Casualty** Allied with the Great Sea

Access all our previous casualty newsletters here 

## LOF NEWS

**Skylark** – edition 255 – services to the vessel were carried out by Spanopoulos Tugs under an LOF salvage contract.

### Glovis Spring

Vehicle carrier, IMO 9749594, Built 2016, 19,638 dwt

**Date of Casualty** 15 February 2018

**Voyage** Singapore to Hong Kong

**Cargo** Vehicles

**Type of Casualty** Ran aground off Paracel Islands in the South China sea. Ardent Maritime Netherlands BV and Guangzhou Salvage have been contracted to save the vessel under an LOF contract.

**Type of Claim** Possible hull damage and LOF salvage claim

**P&I** Steamship Mutual

Lock's wall while leaving Emden, Germany heading to Merkur Offshore Wind Farm, north of Borkum.

**Type of Claim** Allision damage claim

### Kayong Utara

Passenger ro-ro, IMO 8656946, Built 2007, 150 dwt

**Date of Casualty** 20 February 2018

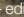
**Type of Casualty** Sank off south Sumatra, Indonesia. All passengers were rescued. One crew member is missing.

**Type of Claim** Total loss claim




## CASUALTY FOLLOW-UP




**Glory Amsterdam**  – edition

& 241 – has completed repairs to the grounding damage which occurred in November 2017.

The vessel left the repair yard in Bremerhaven bound for Puerto Bolivar.


**Diana**  – editions 252, 253 & 255 – the vessel has left the port of Haifa under tow by the tug *Stratis Z*, bound for the port of Tuzia, Turkey, where she will undergo repairs.

**Berg**  – edition 254 – the Novorossiysk Rescue Team has been appointed to carrying out the salvage of the vessel. Work has commenced and will include pumping out the fuel oil and other contaminants, as well as ballast water.

**Nas Pathfinder** – edition 255 – the tug, which got into distress in the Bay of Biscay whilst



towing the decommissioned tug *Marechiaro* bound for Messina, had already been identified as having 17 deficiencies by the Dover Maritime Coastguard Agency after suffering problems and calling at Dover in January. However the tugs were authorised to proceed on 26 January 2018.

**Hephaestus**  – edition 255 – aerial photographs taken during the morning of 17 February 2018 have shown a sheen of oil coming from the wreck of the bunkering tanker off Cawra Point. It is hoped most of the diesel oil remains on board and the sheen is just residue and will evaporate slowly.

