

# Roose + Partners

## Casualty Newsletter 268

16th May 2018

### FEATURE CASUALTY

## Ince Inebolu

Bulk carrier, IMO 9254472, Built 2002, 52,376 dwt

**Date of Casualty** 10 May 2018

**Voyage** Novorossiysk, Russia to Saleef, Yemen

**Cargo** 49,770 m/t of wheat

**Type of Casualty** Explosion

**Type of Claim** Hull damage and possible cargo damage

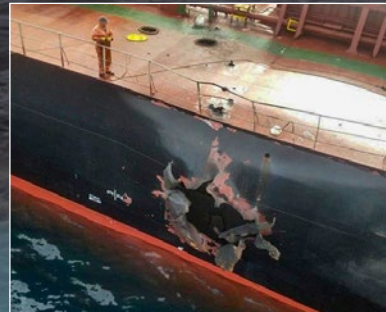
**P&I** London Club

The bulk carrier *Ince Inebolu* was towed into the port of Jizan in Saudi Arabia on 13 May 2018 after she suffered an explosion and damage to her port side.

The vessel had loaded 49,770 m/t of wheat at the Black Sea port of Novorossiysk, Russia and was bound for Saleef in the Yemen. She was anchored 70 miles off Saleef, north of the port of Hodeidah on the Red Sea, and was awaiting permission from the United Nations Verification and Inspection Mechanism (for Yemen) to proceed into the Houthi-controlled port of Saleef when the explosion occurred.

Initial reports suggested the vessel had been the subject of a missile attack but this has yet to be confirmed. Coalition Forces carried out an inspection of the damage which is along her port side above the waterline and on deck. Following the inspection the *Ince Inebolu* was ordered to be taken into Jizan where a detailed investigation into the cause of the explosion and the damage will be carried out.

The United Nations Verification and Inspection Mechanism (UNVIM) carries out screening of cargo vessels bound for Yemen to ensure that no military items are being smuggled into the Country and to facilitate the passage of humanitarian aid.



### NEW CASUALTIES



#### SITC Osaka/NYK Venus ▣

*SITC Osaka* – Fully cellular containership, IMO 9638329, Built 2012, 11,913 dwt

*NYK Venus* – Fully cellular containership, IMO 9312793, Built 2007, 103207 dwt

**Date of Casualty** 4 & 10 May 2018

**Voyage** Kobe to Shidao, Japan / Kobe to Nagoya, Japan & Singapore

**Cargo** General containerised cargo /

**Type of Casualty** The two vessels were in collision at the port of Kobe on 4 May 2018. The *NYK Venus* was permitted to sail on the evening of 4 May 2018. On or around 10 May 2018 the *SITC Osaka*, which was berthed at the Rokko Island container terminal, was reported to have experienced a fire in her aft section. It is not clear if the two incidents are related.

**Type of Claim** Collision damage, fire damage and possible salvage claim and/or General Average declaration

**P&I** London Club / UK Club

#### Nero ▣

Self-propelled barge, Built 2013, 3,576 t

**Date of Casualty** 8 May 2018 – Late Notification

**Voyage** No details

**Cargo** Empty containers

**Type of Casualty** Allided with the Lillo Bridge in Berendrecht. 15 empty containers fell into the water which caused the closure of the canal dock. The containers were recovered by tugs



and pulled to shore where they were lifted from the water from a crane.

**Type of Claim** Allision damage and recovery operations

#### Sinokor Qingdao

Fully cellular containership, IMO 9160906, Built 1999, 11,031 dwt

**Date of Casualty** 8 May 2018 – Late Notification

**Voyage** Gwangyang, China to Hong Kong

**Cargo** General containerised cargo

**Type of Casualty** Suffered a fire on board in the South China Sea.

**Type of Claim** Fire damage claim

**P&I** Standard Club

#### Abenaki

Motor yacht, No other details

**Date of Casualty** 9 May 2018

**Type of Casualty** Sank off the port of Charlottetown near the Blockhouse Lighthouse off Canada's Prince Edward Island. The 15 people on board were rescued from the upturned hull and the water. The wreck was recovered.

**Type of Claim** Damage claim

#### Ardent ▣

Fishing vessel, IMO 7922893, Built 1981, 136 gt

**Date of Casualty** 10 May 2018

**Type of Casualty** Suffered an engine room fire whilst 20 miles north east of Dunkirk. Two crew members suffered smoke inhalation and were evacuated. The vessel proceeded to Rasmgate under escort after the fire was extinguished.

**Type of Claim** Fire damage and crew claims



#### Manuela Hauswald ▣

Fishing vessel, No other details

**Date of Casualty** 10 May 2018

**Type of Casualty** Suffered an engine room fire off Grömitz in the Baltic Sea.

**Type of Claim** Fire damage claim



#### Reyes del Mar 2 ▣

Fish factory, No other details

**Date of Casualty** 10 May 2018

**Type of Casualty** Capsized and sank whilst docked at the port of Concepción, Uruguay. In November 2011 the ship caught fire in the port and has remained at the quay since. Click [here](#) for video.

**Type of Claim** Salvage and/or wreck removal operations

#### Marietje Nora

General cargo vessel, IMO 9481609, Built 2015, 9,068 dwt

**Date of Casualty** 12 May 2018

**Voyage** Frederikshavn, Denmark to Ravenna, Italy

**Cargo** No details

**Type of Casualty** Disabled in the Ionian Sea. The ship was towed to Corfu, Greece where departure permission was refused pending a certificate of seaworthiness.

**Type of Claim** Possible salvage claim

**P&I** North of England

Further casualties overleaf ▸

#### Frankfurt Express

Fully cellular containership, IMO 9450442, Built 2010, 103,994 dwt

**Date of Casualty** 12 May 2018

**Voyage** Damietta, Egypt to Barcelona, Spain

**Cargo** General containerised cargo

**Type of Casualty** Suffered engine failure whilst manoeuvring to depart the port of Damietta. The vessel, which temporarily blocked the port, was assisted by tugs.

**Type of Claim** Possible salvage claim

**P&I** Britannia

#### MCC Seoul/KSL Gladiator

*MCC Seoul* – Fully cellular containership, IMO 9357535, Built 2008, 22,314 dwt

*KSL Gladiator* – Fully cellular containership, IMO 8677237, Built 2008, 2,650 dwt

**Date of Casualty** 12 May 2018

**Voyage** Chittagong, Bangladesh to Penang, Malaysia / Moored at Chittagong

**Cargo** General containerised cargo / No details

**Type of Casualty** Collision at Chittagong.

**Type of Claim** Collision damage claim

**P&I** Skuld / Shipowners Club

#### Tofteviken/Polaris ▣

*Tofteviken* – Crude oil tanker, IMO 9285847, Built 2005, 115,340 dwt

*Polaris* – Fishing vessel, No details

**Date of Casualty** 12 May 2018

**Voyage** Philadelphia to New York, USA

**Cargo** Loaded, no details

**Type of Casualty** Collision 30 miles southeast of Bridgehampton, New York.

**Type of Claim** Collision damage claim

**P&I** Skuld / No info



# Roose + Partners

NEW CASUALTIES - Continued - edition (268)

## Jan Molsen

Ferry, No other details

**Date of Casualty** 13 May 2018

**Type of Casualty** Suffered an engine room fire whilst on the Elbe with 23 passengers on board.

**Type of Claim** Fire damage claim



## Gouwenaar II

Self-propelled barge, 1,937 ts

**Date of Casualty** 13 May 2018

**Voyage** Alphen to Gouda, Netherlands

**Cargo** General containerised cargo

**Type of Casualty** Allided with the Gouda-Waddinxveen Railway bridge at Alphen whilst transiting the Rhine. The bridge shifted on its foundation and two containers on the barge were damaged.

**Type of Claim** Allision damage claim

## Grace Sulphur

Combined chemical and oil tanker, IMO 9552678, Built 2010, 2,999 dwt

**Date of Casualty** 13 May 2018

**Voyage** Zhenjiang, China to Sakai, Japan

**Cargo** No details

**Type of Casualty** Collided with an unnamed fishing boat in the Kanmon Strait. The vessel berthed in Moji for investigation.

**Type of Claim** Collision damage claim

**P&I** Japan Shipowners



## Kubilai Khan

General cargo vessel, IMO 8913722, Built 1996, 6,886 dwt

**Date of Casualty** 13 May 2018

**Voyage** Las Palmas, Canary Islands to Flushing, Netherlands

**Cargo** No details

**Type of Casualty** Suffered an engine breakdown 20 miles north east of Punta Sardina and was disabled north of Las Palmas. The search and rescue vessel *Miguel de Cervantes* was deployed and towed the vessel to Las Palmas.

**Type of Claim** Possible salvage claim and/or General Average declaration

## Grande Riviere

Chemical tanker, IMO 9733686, Built 2015, 30,732 dwt

**Date of Casualty** 13 May 2018

**Voyage** Aveiro, Portugal to Genoa, Italy

**Cargo** No details

**Type of Casualty** Suffered a fire whilst off Porto Petrolì, Genoa, Italy. The crew were able to extinguish the fire.

**Type of Claim** Fire damage claim

**P&I** Britannia

## Marshal Vasilevskiy

Offshore gas processing vessel, IMO 9778313, Built 2018, 92,800 dwt

**Date of Casualty** 14 March 2018

**Type of Casualty** Suffered an explosion during sea trials off Ulsan.

**Type of Claim** Damage claim

## Angara/Aura

*Angara* - Chemical tanker, IMO 7427647, Built 1977, 3,150 dwt

*Aura* - Bunkering tanker, IMO 8846864, Built 1976, 1,652 dwt

**Date of Casualty** 14 May 2018

**Voyage** St Petersburg to Kronshtadt, Russia / No details

**Cargo** No details

**Type of Casualty** Collision off Kronshtadt.

**Type of Claim** Collision damage claim

## Marella Discovery

Passenger cruise ship, IMO 9070620, Built 1995, 5,200 dwt

**Date of Casualty** 14 May 2018

**Type of Casualty** Suffered engine failure whilst transiting the Guidecca Canal, Venice. Tugs assisted the vessel to berth. The ship had 1,830 passengers and 750 crew members on board.

**Type of Claim** Possible tug claim

**P&I** UK Club

## Noorderhaaks

UK 195 - Fishing vessel, No other details

**Date of Casualty** 14 May 2018

**Type of Casualty** Allided with a windmill at the Eneco Princess Amalia windfarm.

**Type of Claim** Allision damage claim

## IJveer 52

Ferry, No other details

**Date of Casualty** 15 May 2018

**Type of Casualty** Allided with a quay in Amsterdam. One passenger was injured.

**Type of Claim** Allision damage and passenger claims

## Herzogenburg

Self-propelled barge, 1,911 ts

**Date of Casualty** 15 May 2018

**Voyage** Flushing, Netherlands to Frankfurt, Germany

**Cargo** Cellulose

**Type of Casualty** Allided with a quay near the Friedens Bridge in Frankfurt and suffered water ingress.

**Type of Claim** Allision damage claim

## Xinghe 9

General cargo vessel, IMO 9005637, Built 1990, 1,595 dwt

**Date of Casualty** 15 May 2018

**Voyage** Ulsan, South Korea to Kobe, Japan

**Cargo** No details

**Type of Casualty** Collided with an unnamed fishing vessel off Matsuyama, Japan

Access all our previous casualty newsletters here

## IN OTHER NEWS

The International Salvage Union has named Roger Evans as its new Secretary General. He will succeed Mark Hoddinott who is retiring later this year after six years in the post. Roger is a former master mariner who sailed on a variety of vessels including reefers, bulk carriers, container and general cargo ships before working ashore with Smit, where he has been heading their UK office.

**Type of Claim** Collision damage claim

**P&I** American Club

## SMS Swakarya

Landing craft, IMO 8981573, Built 1997, 785 gt

**Date of Casualty** 15 May 2018

**Type of Casualty** Grounded off Gilimanuk, Indonesia.

**Type of Claim** Hull damage and salvage claim



## CASUALTY FOLLOW-UP



**Mestre Simao** - editions 250, 251 & 263 - the tugs *R.Hercules* and *Resolve Commander* together with the platform *RMG 280*, all owned by *Resolve Salvage & Fire*, arrived at Horta on 12 May 2018 to begin the work of dismantling the wreck of the ferry which grounded on the rocks at the port of Madalena on Pico island on 6 January 2018.

**Hephaestus** - edition 256 - the vessel remains aground in Malta with no date yet fixed for its removal.

**Dong Won 701** - editions 263 & 264 - the burned out wreck of the fishing vessel was pulled to another berth in the port of Timaru on 13 May 2018 to free up space for other vessels. Discussions continue regarding the fate of the vessel.

**Maersk Honam** - editions 258, 259, 260, 261, 262, 263, 264, 265 & 267 - salvors commenced the discharge of extinguishing water yesterday to the vessel *Roma Maersk*. It is hoped the vessel will be permitted to berth to discharge sound cargo within the next 7 days. Salvors have submitted their salvage security demand and steps are now being taken to lodge salvage guarantees in addition to GA security to enable the release of cargo for onwarding by the various lines.

**Finlandia Seaways** - edition 264 - the ferry is expected to be towed to a repair facility today. It is hoped she will be ready to re-enter service in late June.

