

FEATURE CASUALTY

Viking Sky

Passenger cruise ship, IMO 9650420, Built 2017, 47,842 gt

Date of Casualty 23 May 2019

Type of Casualty Breakdown

Type of Claim Possible salvage claim, damage and passenger claims

P&I Steamship Mutual

The cruise ship *Viking Sky* has been the subject of intense media interest over the last few days after she suffered a loss of power whilst off the coast of Norway near Farstad.

The 2017 built vessel had departed Tromsø for Stavanger when she encountered engine problems during heavy storms with waves reported to be in excess of 10 metres. She had a total of 1,373 people on board of which 915 were passengers, many of whom were elderly, when power to the vessel's four engines was lost and the cruise ship began to drift towards the rocky shore. The crew were able to anchor just off Hustadvika, which is situated between the Norwegian cities of Alesund and Trondheim, but in the heavy seas and high winds the anchored *Viking Sky* was rolling considerably causing furniture and fittings on board to shift, with ceilings videoed collapsing onto passengers. Conditions were too severe to consider launching the vessel's lifeboats.

The Captain issued a distress message requesting immediate assistance with possible evacuation. Tugs and helicopters were dispatched to the area whilst passengers were gathered for emergency evacuation.

Sea King helicopters from Ørland, Super Puma helicopters from Florø and offshore industry emergency response helicopters responded. Despite the testing conditions 460 passengers were winched off the anchored vessel by the rescue helicopters. Twenty eight people were reported to have been injured. Nine remained in hospital and a 90 year old female passenger suffered multiple fractures and was in a critical condition but is now reported to be recovering.

Tugs eventually took the *Viking Sky* under tow and she was brought into Molde by four tugs on 24 March at 1620 hours. Before the tow one of the *Viking Sky*'s anchors had to be cut as crews were unable to raise it. Norwegian Authorities have launched an investigation into the casualty. Focus will be on the decision to set sail despite the weather, why all four of the MAN engines which are located in two separate areas could have failed at once and how the rescue was handled. Criticism has been made of the Captain's decision to depart from Tromsø with the storm already in progress. The area off Hustadvika is considered to be one of the most dangerous areas along the Norwegian coast and local ferry services, which rarely stop, had already been cancelled due to the conditions. The *Viking Sky* was on a 12-day cruise along Norway's coast visiting the cities of Narvik, Alta, Tromsø, Bodø and Stavanger before proceeding to Tilbury, UK.

The *Viking Sky* departed Molde early this morning under her own power but with the Norwegian offshore tug *Normand Ranger* connected as a precaution due to the missing and damaged anchors. She is due in Kristiansund later this evening where repairs and further investigations will be completed.



NEW CASUALTIES

Federal Hunter

Bulk carrier, IMO 9205938, Built 2001, 36,563 dwt

Date of Casualty 20 March 2019

Voyage Rio Grande to Sao Francisco Do Sul, Brazil

Cargo No details

Type of Casualty Allided with a channel fairway buoy at Sao Francisco Do Sul, Brazil

Type of Claim Allision damage claim

P&I Standard Club

for repairs by the tug *Lois M.* Click [here](#) for video.

Type of Claim Possible salvage claim and/or General Average declaration

P&I Steamship Mutual



Sonja S

Self-propelled barge, 1,759 ts

Date of Casualty 20 March 2019

Voyage Passau to Regensburg, Germany

Cargo No details

Type of Casualty Allided with the railway bridge at Bogen whilst transiting the Danube. The wheelhouse and navigational equipment was destroyed.

Type of Claim Allision damage claim

Jana Desgagnes

Combined chemical and oil tanker, IMO 9046564, Built 1993, 10,511 dwt

Date of Casualty 21 March 2019

Voyage Toronto to Come By Chance, Newfoundland, Canada

Cargo 8000 m³ of oil products

Type of Casualty Disabled and trapped by ice in the Cabot Strait off the southwestern coast of Newfoundland and Labrador. The vessel, whose rudder was damaged, was assisted by the Canadian Coast Guard vessel and icebreaker *Captain Molly Kool* who pulled her away from the shore. She was then towed to Sydney in Nova Scotia

Carnival Triumph

Passenger cruise ship, IMO 9138850, Built 1999, 10,984 dwt

Date of Casualty 21 March 2019

Type of Casualty Caught fire during refurbishment works at Cadiz, Spain.

Type of Claim Fire damage claim

P&I Steamship Mutual



Marcliff/APL Guam/Hansa Steinburg

Marcliff - Fully cellular containership, IMO 9343663, Built 2007, 12,780 dwt

APL Guam - Fully cellular containership, IMO 9229609, Built 2001, 16,742 dwt

Hansa Steinburg - Fully cellular containership, IMO 9436094, Built 2010, 23,286 dwt

[Further casualties overleaf](#)

Date of Casualty 21 March 2019

Voyage Yokohama to Nagoya, Japan / Yokohama to Guam / Yokohama to Nagoya

Cargo All carrying general containerised cargo

Type of Casualty The vessels were involved in a collision at the Yokohama Anchorage off Nonmoku Terminal.

Type of Claim Collision damage claim

P&I Swedish Club / North of England / Gard



Sir John Franklin

Coast guard vessel, Built 2017, 3,212 dwt

Date of Casualty 22 March 2019

Type of Casualty Allided with the Ogden Point breakwater during manoeuvres.

Type of Claim Allision damage claim

Northsea Alpha

Combined chemical and oil tanker, IMO 9547764, Built 2010, 8,615 dwt

Date of Casualty 22 May 2019

Voyage Eastham, UK to Frederica, Denmark

Cargo No details

Type of Casualty Grounded on the embankment whilst transiting the Kiel Canal. The vessel was refloated by tugs and berthed at the Voith Quay in Kiel for survey.

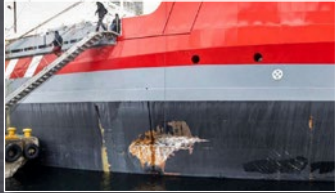


Roose + Partners

NEW CASUALTIES - Continued - edition 313

Type of Claim Possible hull damage and salvage claim

P&I Britannia



Egbert Wagenborg ▽

General cargo vessel, IMO 9802695, Built 2017, 14,330 dwt

Date of Casualty 23 March 2019

Voyage to Ålesund, Norway

Cargo In ballast

Type of Casualty Allided with a pier at Ålesund, during berthing operations. The vessel suffered a four metre breach in a forward starboard ballast tank and the pier was damaged.

Type of Claim Allision damage claim

P&I Standard Club

Hagland Captain ▽

General cargo vessel, IMO 9521356, Built 2012, 4,699 dwt

Date of Casualty 23 March 2019

Voyage Sandane to Skogn, Norway

Cargo Timber

Type of Casualty Suffered engine failure whilst off Hustadvika, Norway during storms. The vessel began rolling severely and developed a port list losing part of her deck cargo. She was reported to be drifting towards the coast. After deploying the anchor to prevent

the vessel closing the coast, the nine man crew abandoned the vessel by jumping into the sea. They were picked up by rescue helicopters which had initially responded to assist the *Viking Sky* (today's feature). The abandoned vessel was later taken in tow to Averøy by the offshore tug *Boa Balder*.

Type of Claim Cargo loss, possible salvage claim and/or General Average declaration

P&I Gard

Bei You 25

Passenger cruise ship, No other details

Date of Casualty 23 March 2019

Type of Casualty Ran aground on the western coast of Weizhou Island, China in the Gulf of Tonkin. The vessel, which had 770 passengers on board, was refloated the following morning. No passengers were evacuated during the operation.

Type of Claim Possible hull damage and salvage claim

Aseem/Shinyo Ocean ▽

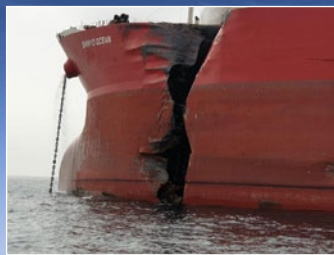
Aseem – LNG carrier, IMO 9377547, Built 2009, 86,655 dwt

Shinyo Ocean – Crude oil tanker, IMO 9197868, Built 2001, 281,395 dwt

Date of Casualty 24 March 2019

Voyage Jamnagar Terminal, India to Al Shaheh Terminal, Qatar / Dahej, India to Ras Laffan, Qatar

Cargo Both vessels in ballast



Type of Casualty The *Aseem* collided with the *Shinyo Ocean* which was anchored at the Fujairah Anchorage, UAE in the Gulf of Oman. The VLCC suffered a breach in her port side and the *Aseem* was severely damaged at her bow.

Type of Claim Collision claim

P&I Standard Club / Gard

Calisto/Interlink Affinity/ Claudia

Calisto – Fully cellular containership, IMO 9306067, Built 2005, 20,615 dwt

Interlink Affinity – Bulk carrier, IMO 9754082, Built 2016, 39,046 dwt

Claudia – Bunker tanker, IMO 9280110, Built 2003, 1,340 dwt

Date of Casualty 24 March 2019

Voyage Hamburg, Germany to Gdynia Poland / Punta Lobitos, Peru to Brunsbüttel, Germany / n/a

Cargo General containerised cargo / No details / fuel oil

Type of Casualty suffered rudder failure and struck the quay at Elbe Port, Brunsbüttel. The vessel also struck the *Interlink Affinity* which was undergoing bunkering operations from the *Claudia*. There was some loss of oil into the Canal. The tanker suffered serious damage.

Type of Claim Collision and allision damage claims

P&I Standard Club / Gard / Gard

Mystic

Bulk carrier, IMO 9421831, Built 2008, 170,039 dwt

Date of Casualty 24 March 2019

Voyage Singapore to Gwangyang, South Korea

Cargo No details

Type of Casualty Suffered a fire in her accommodation whilst off Malaysia. The fire was extinguished by the crew.

Type of Claim Fire damage claim

P&I Gard



KM Awu ▽

Passenger ro-ro, IMO 8915653, Built 1991, 1,405 dwt

Date of Casualty 25 March 2019

Type of Casualty Caught fire at Semarang Port Ship Repair Yard, Indonesia whilst there for annual maintenance.

Type of Claim Fire damage claim

Dewana Dharma

Ferry, IMO 8135629, Built 1982, 560 gt

Date of Casualty 25 March 2019

Type of Casualty Caught fire at the PT Adiluhung Sarana Segara shipyard Indonesia whilst undergoing repairs.

Type of Claim Fire damage claim

NS Pride

General cargo vessel, IMO 8815293, Built 1988, 3,376 dwt

Date of Casualty 25 March 2019

Voyage Ancona, Italy to Agios Nikolaos, Greece

Cargo No details

Type of Casualty Disabled and assisted by the tug *Proteas* into the port of Patras.

Type of Claim Possible salvage claim

Queen of Surrey ▽

Ro-ro, IMO 7902221, Built 1981, 1,099 dwt

Date of Casualty 26 March 2019

Type of Casualty Allided with a dock at the Langdale Terminal during turning manoeuvres.

Type of Claim Allision damage claim

P&I Standard Club

Filia Joy/New Horizon

Filia Joy – Bulk carrier, IMO 9558153, Built 2009, 53,100 dwt

New Horizon – Bulk carrier, IMO 9420318, Built 2010, 55,445 dwt

Date of Casualty 23 March 2019

Voyage At Chittagong anchorage / Singapore



to Chittagong

Cargo No details

Type of Casualty The vessels came into contact at Chittagong.

Type of Claim Possible collision claim

P&I North of England / London Club

CASUALTY FOLLOW-UP

Sincerity Ace – editions 301, 302, 303 & 305 – was towed to Matsuura Port in Japan arriving on 22 March 2019. The damaged cargo remains on board with shipowners yet to decide on disposal of the wreck and cargo.

Cardium – editions 311 & 312 - Multirash and Hebo Maritime have continued their preparations for the lifting of the barge. Numerous craft and salvage equipment, including the *Hebo Lift 6*, *Hebo Lift 7* and *Hebo Lift 8* with a combined lifted capacity of 800 m/t and the sheerleg *Cormorant* with a 600 m/t lifting capacity, have been deployed to the site.

Grande America – editions 311 & 312 – adverse weather at the site of the sinking of the vessel continue to hamper anti-pollution efforts. Weather is forecast to remain unfavourable for the next week.

Forenso & Edelweiss ▽ – edition 312 – the *For enso* was able to resume its voyage to Cologne following the collision on the Waal. The *Edelweiss* remained at the emergency berth in the Weurt West Canal. Passengers were given the option of transferring to the river cruise ship *Oscar Wilde* for the remaining cruise or to abort the trip altogether.



Access all our previous casualty newsletters here 