

FEATURE CASUALTY

Golden Ray

Vehicle carrier, IMO 9775816, Built 2017, 20,995 dwt 2017

Date of Casualty 8 September 2019

Voyage Brunswick to Baltimore, USA

Cargo 4,000 vehicles

Type of Casualty Capsize and fire

Type of Claim LOF salvage and possible General Average declaration

P&I North of England

In the early hours of 8 September 2019 the vehicle carrier *Golden Ray* suffered a loss of stability and capsized as she was departing the port of Brunswick, Georgia, USA.

The two year old vessel had arrived from Jacksonville, Florida in the evening of 7 September 2019 and completed cargo operations at 2300 hours. She left her berth shortly after midnight on 8 September 2019 under the control of a local pilot and was bound to Baltimore. She was loaded with some 4,000 Hyundai vehicles. After being underway for 23 minutes, and as she was proceeding in St. Simon Sound she is reported to have suddenly stopped. She developed a severe almost 90° list to port, eventually ending up on her side. Smoke and flames were later seen coming from the vessel. The weather at the time was clear with calm seas. The Coast Guard and local agencies immediately

deployed rescue craft to the area. Tugs were tasked with towing the vessel close to the shore to prevent her from sinking.

The *Golden Ray* had a crew of 23 on board as well as the local pilot. Twenty people, including the pilot, were initially rescued from the vessel after climbing out of various openings. Some were then airlifted off by helicopter and others were able to clamber down to the various attending craft. The remaining crew were thought to be trapped in the vessel. Rescue teams were alerted to their location when they heard tapping noises on the hull. Coast Guard teams initially determined that it was too dangerous to go on board the vehicle carrier. The remaining crew members have since been rescued after being trapped for over 35 hours. Rescuers had to drill holes in the hull to access the crew and initially provided them with food and water. The final crew member, who had been trapped behind a glass panel in the ship's engineering control room without any access to food or water and in sweltering conditions, was taken off the vessel at

1800 hours local time. All four were sent to hospital for evaluation.

The vessel is owned and operated by Hyundai Glovis and runs a monthly voyage between South Korea and the USA. Salvors Donjon Smit have been contracted to salvage the vessel and her cargo under the terms of a Lloyd's Open Form Salvage Agreement.

Two NTSB inspectors have been sent to Brunswick and an investigation into the casualty is underway. The casualty has led to disruption in the port of Brunswick which is one of the US's busiest ports handling vehicles. The incident is reminiscent of the accident involving the vehicle carrier *Hoegh Osaka* in 2015 which capsized whilst the vessel was departing Southampton. It again highlights the challenges with loading and properly ballasting these vessels whilst having to keep to tight voyage schedules. Roose+Partners represented the cargo owners and underwriters in the salvage defence and recovery proceedings.

Click [here](#) for video, and [here](#) and [here](#).



NEW CASUALTIES

Contship Eco

Fully cellular containership, IMO 9492751, Built 2008, 9,906 dwt

Date of Casualty 2 September 2019 – Late Notification

Voyage Khoms, Libya to Piraeus, Greece

Cargo General containerised cargo

Type of Casualty Disabled in the southern Aegean Sea. Tug *Christos XXII* was deployed to assist and towed the containership to Piraeus.

Type of Claim Towage claim

P&I West of England

Sea Prospect/Sagasbank

Sea Prospect - General cargo vessel with container capacity, IMO 9516143, Built 2012, 9,385 dwt

Sagasbank - General cargo vessel, IMO 9369655, Built 2010, 4,500 dwt

Date of Casualty 3 September 2019 – Late Notification

Voyage Kantvik, Finland to Casablanca, Morocco / Figuiara da Foz, Portugal to Gävle, Sweden

Cargo No details

Type of Casualty The *Sea Prospect* collided with the *Sagasbank* which was moored on the Kiel Canal at Brunsbüttel.

Type of Claim Collision damage claim

P&I Gard / North of England

Playa de Bares

Fishing vessel, No other details

Date of Casualty 4 September 2019

Type of Casualty Disabled in the Bay of Biscay. The vessel was towed into the port of Cariño.

Type of Claim Possible salvage claim



Roose + Partners

NEW CASUALTIES - Continued - edition (337)

Kokusho Maru/Seiyo Maru No.8

Kokusho Maru - Combined chemical and oil tanker, IMO 9544188, Built 2009, 1,311 dwt

Seiyo Maru No.8 - General cargo vessel, IMO 9789178, Built 2016, 850 dwt

Date of Casualty 4 September 2019

Voyage Kinoo to Mizushima, Japan / Hakata to Mizushima, Japan

Cargo No details

Type of Casualty The vessels were in collision near Mizushima, Japan.

Type of Claim Collision damage claim



Sharon Vale

Guard ship, No other details

Date of Casualty 5 September 2019

Type of Casualty Suffered mechanical failure and crashed into six boats and the Camber Docks in Portsmouth, UK.

Type of Claim Collision and allision damage claims

Insomnia

Self-propelled barge, 3,225 ts

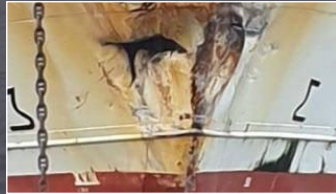
Date of Casualty 5 September 2019

Voyage Mainz to Niehl, Germany

Cargo Scrap iron

Type of Casualty Ran aground whilst transiting the Rhine. The vessel was pulled off with the assistance of the barge *Margreta*.

Type of Claim Possible salvage claim



Pesca Vaqueiro

Trawler, IMO 8521335, Built 1988, 1,886 dwt

Date of Casualty 5 September 2019

Type of Casualty Allided with a dock during berthing operations at Port Stanley, Falkland Islands. The vessel, carrying a cargo of hake, was seriously damaged at her bow.

Type of Claim Allision damage claim



Astor

Passenger cruise ship, IMO 8506373, Built 1987, 20,704 gt

Date of Casualty 5 September 2019

Type of Casualty Allided with a steel pier during manoeuvres at Nantes, France. The vessels port side was breached. She has since proceeded to Saint-Nazaire for repairs.

Type of Claim Allision damage and passenger claims

P&I American Club

Krokolino

Ferry, No others details

Date of Casualty 5 September 2019

Type of Casualty An unnamed barge collided

with the passenger ferry on the Rhine near Cologne. Damage is estimated to be Eur 100,000.

Type of Claim Collision damage claim

Xin Ou 21

Fully cellular containership, IMO 9138317, Built 1999, 34,017 dwt

Date of Casualty 5 September 2019

Voyage Xiamen to Rizhao, China

Cargo General containerised cargo

Type of Casualty Suffered a loss of stability during poor weather whilst off Zhoushan and lost 72 containers overboard. The vessel proceeded to an anchorage north of Zhoushan.

Type of Claim Cargo and container loss and damage, possible General Average declaration and clean-up operation



Kelly

General cargo vessel with container capacity, IMO 9255622, Built 2003, 9,857 dwt

Date of Casualty 6 September 2019

Voyage Rotterdam, Netherlands to Kaliningrad, Russia

Cargo No details

Type of Casualty Caught fire whilst transiting the Elbe river near Brunsbüttel. Local fire-fighters attended. Three crew members were seriously injured and one has subsequently died.

Type of Claim Fire damage and crew injury claims, possible salvage claim



Saba Niaga

General cargo vessel, IMO 8622024, Built 1984, 646 gt

Date of Casualty 6 September 2019

Voyage Martapura Baru to Tanjung Selor, Kalimantan, Indonesia

Cargo Cement in bags

Type of Casualty A fire broke out in the crew accommodation whilst transiting the Barito river, south Kalimantan, Indonesia. The fire was quickly extinguished by the crew.

Type of Claim Fire damage claim

Ji Shun 16

General cargo vessel, IMO 8342349, Built 2003, 3,000 dwt

Date of Casualty 6 September 2019

Voyage No details

Cargo General containerised cargo

Type of Casualty Sank in the East China sea 20 nm north east of Zhoushan, China.

Type of Claim Total loss claim

Nordmed

Fully cellular containership, IMO 9241487, Built 2003, 33,783 dwt

Date of Casualty 7 September 2019

Voyage Khalifa, UAE to Karachi, Pakistan

Cargo General containerised cargo

Type of Casualty Collided with a fishing vessel at the port of Karachi. The fishing vessel capsized but all her crew were rescued.

Type of Claim Collision damage and clean-up operations

P&I Gard



V. de Beijer Sr/V. de Beijer Sr. II/Excelsior

V. de Beijer Sr - Self-propelled barge, 2,607 ts

V. de Beijer Sr. II - Barge, 2,415 ts

Excelsior - Self-propelled barge, 5,149 ts

Date of Casualty 7 September 2019

Voyage Voerde to Dorsten, Germany / Duisburg, Germany to Tolkamer, Netherlands

Cargo No details

Type of Casualty The *V. de Beijer Sr* and pushed barge *V. de Beijer Sr. II* were in collision with the *Excelsior* on the Rhine. The *Excelsior* struck the aft of the *V. de Beijer Sr*.

Type of Claim Collision damage claim

Hafnia Soya/Sønderstrand - S 45

Hafnia Soya - Product tanker, IMO 9729271, Built 2015, 38,667 dwt

Further casualties overleaf

Sønderstrand - S 45 - Fishing vessel, 85 gt

Date of Casualty 7 September 2019

Voyage Terneuzen, Netherlands to Vysotsk, Russia / n/a

Cargo No details / n/a

Type of Casualty The vessels were in collision in the Skagerrak Strait.

Type of Claim Collision damage claim

P&I Skuld / No info

Gunvoor

Yacht, No other details

Date of Casualty 7 September 2019

Type of Casualty Sank off Boulogne, France. The skipper was rescued.

Type of Claim Total loss claim



Koo's 102

Fishing vessel, IMO 9349899, Built 2005, 950 dwt

Date of Casualty 8 September 2019

Type of Casualty Suffered a fire whilst moored at Majuro Lagoon. All the crew were evacuated.

Type of Claim Fire damage claim

P&I MS Amlin

Aqua Kvaloev

Live fish carrier, IMO 9828792, Built 2019, 1,230 dwt 2019

Date of Casualty 8 September 2019

Type of Casualty Ran aground south of



Roose + Partners

NEW CASUALTIES - Continued - edition (337)

Indrøyna, Norway. The unloaded vessel, which suffered some water ingress, was refloated with assistance from the search and rescue vessel *Halvdan Grieg*.

Type of Claim Hull damage and possible salvage claim

P&I Gard



Discover/Ast-1 ▣

Discover – Self-propelled barge, 1,492 ts
Ast-1 – Barge, No other details

Date of Casualty 8 September 2019

Voyage Passau to Straubing, Germany

Cargo Rapeseed

Type of Casualty The *Discover* grounded on the Danube whilst pushing barge *Ast-1*. The *Discover* was holed. Both vessels have been refloated.

Type of Claim Hull damage and possible salvage claim and/or General Average declaration

Lokongbanua

Ferry, Built 2009

Date of Casualty 8 September 2019

Type of Casualty Grounded off Pulau Pasige,

North Sulawesi, Indonesia. All passengers were safely evacuated.

Type of Claim Possible hull damage and salvage claim

Jin Ao/Asian Joy

Jin Ao – Bulk carrier, IMO 9565132, Built 2010, 5,137 dwt

Asian Joy – General cargo vessel, IMO 9409704, Built 2011, 6,814 dwt

Date of Casualty 9 September 2019

Voyage Tomakomai to Kawasaki, Japan / Bayuquan, China to Kawasaki, Japan

Cargo No details

Type of Casualty The vessels were in collision off Yokohama after they dragged their anchors during poor weather.

Type of Claim Collision damage claim

P&I No info / Swedish Club

Sulphur Esperanza

Chemical tanker, IMO 9827346, Built 2018, 3,836 dwt

Date of Casualty 9 September 2019

Voyage Yokohama to Kawasaki, Japan

Cargo No details

Type of Casualty Allided with a facility in Yokohama after suffering a loss of power and being pushed by strong winds towards the pier.

Type of Claim Allision damage claim

P&I Japan Shipowners

Shoyo Maru/No. 36

Oyarikimaru

Shoyo Maru – Training ship, Built 2019

No. 36 Oyarikimaru – Sand carrier,

Date of Casualty 9 September 2019

Voyage n/a /

Cargo n/a / Sand

Type of Casualty The sand carrier dragged at anchor during the poor weather and collided with the training vessel.

Type of Claim Collision damage claim

Bravery Ace

Vehicle carrier, IMO 9207120, Built 1999, 17,686 dwt

Date of Casualty 9 September 2019

Voyage Nagoya, Japan to Kamarajar, India

Cargo Vehicles

Type of Casualty Allided with a wharf whilst departing Nagoya.

Type of Claim Allision damage claim

P&I Japan Shipowners

Bungo Princess ▣

Bulk carrier, IMO 9496654, Built 2009, 10,034 dwt

Date of Casualty 9 September 2019

Voyage Shanghai, China to Yokohama, Japan

Cargo No details

Type of Casualty Draggled at anchor whilst off Yokohama during poor weather and allided with the Harbour road bridge.

Type of Claim Allision damage claim

P&I Japan Shipowners

Michalis


General cargo vessel with container capacity, IMO 7383554, Built 1974, 1,755 dwt

Date of Casualty 10 September 2019

Voyage Lavrio, Greece to Limassol, Cyprus

Cargo Stone

Type of Casualty Disabled off Syros, Greece. A

Access all our previous casualty newsletters here 

LOF NEWS

See today's feature.

Coast Guard vessel and tug were deployed. The vessel was towed into Syros.

Type of Claim Possible salvage claim and/or General Average declaration

Kiran Asya ▣

Bulk carrier, IMO 9040895, Built 2005, 66,533 dwt

Date of Casualty 10 September 2019

Voyage Novorossiysk, Russia for Iskenderun, Turkey

Cargo Wheat

Type of Casualty Suffered a fire during discharge operations at Iskenderun. Local fire-fighters attended and brought the fire under control. The fire's origin was reported to be the boiler room.

Type of Claim Fire damage claim and possible General Average declaration

P&I Skuld



CASUALTY FOLLOW-UP



Nur Allya – editions 335 & 336 – a team of investigators from the Indonesian National Transportation Safety Committee (NTSC) are expected to head to the location where the first distress signal was issued by the vessel. They are hopeful they may be able to locate the vessel using the signal emitted from the Voyage Data Recorder.

Santika Nusantara – edition 335 – the search and rescue efforts for remaining victims from the fire have been officially stopped.

Turia ▣ – editions 335 & 336 – the minesweeper was refloated on 3 September 2019 and pulled into the port of Cartagena by the search and rescue vessel *M. Astelero*.

Conception – edition 336 – the owner of the dive ship, which caught fire last week leading to the loss of 33 passengers and one crew members, has filed a petition

in the US District Court in Los Angeles seeking to limit their liability in respect of the loss. Investigators have been interviewing witnesses and inspecting another similar vessel owned by Truth Aquatics. Their preliminary report is expected to be issued in the next week. It is thought a focus will be the lack of night watchman which is reported to be stipulated as required on the vessel's safety certificate. The *Conception's* crew were tested for alcohol with the results being negative. The vessel has been secured underwater but it is hoped that an improvement in the weather will enable the wreck to be raised today.

Kanuni D.S. ▣ – edition 336 – the vessel was refloated and towed to a safe anchorage south of Bozcaada island by a Coastal Safety on 4 September 2019.

