

Roose + Partners

Casualty Newsletter ⑥1

21st May 2014

FEATURE CASUALTY

Saloos

Ro-ro, Built 1983, 4,403 dwt

Date of Casualty 15 May 2014

Voyage Pointe Noire, Congo to Cabinda, Angola

Cargo General containerised cargo

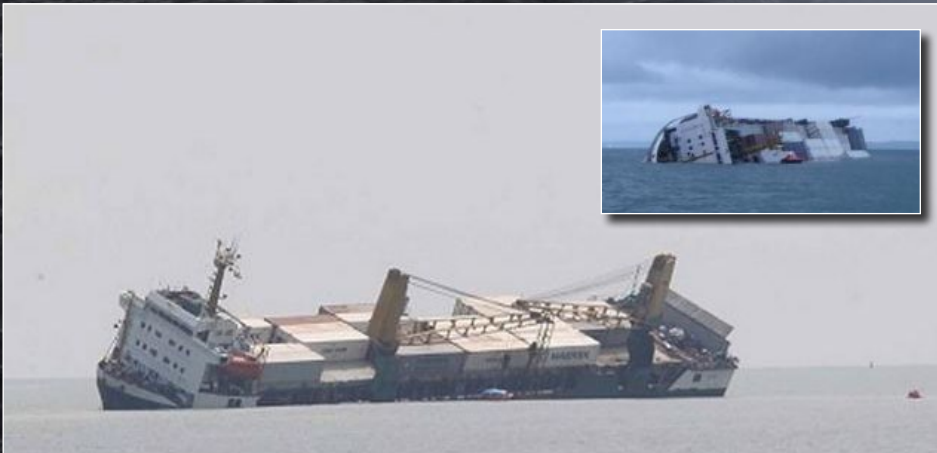
Type of Casualty Capsize off Cabinda

Type of Claim LOF Salvage claim

The ro-ro vessel *Saloos*, which was proceeding from Pointe Noire in the Congo, sunk at the entrance to the Port of Cabinda in Angola on 17 May 2014. The vessel, which was laden with some 155 containers of general cargo, already had issues with water ingress and a port list when she arrived at Cabinda roads on 15 May 2014. Despite the efforts of the crew, they were unable to stop the ingress of water and stabilise the vessel and the vessel developed a port list which could not be righted. When it seemed that capsizing seemed inevitable, the crew members were evacuated from the vessel.

The *Saloos* finally sank overnight between 16 and 17 May 2014. She is now lying on her port side in seven metres of water and many of her containers have fallen into the sea. The authorities have dispatched vessels to the scene to recover as many of the boxes as possible since they will be a danger to other vessels using the port. Some containers have been washed ashore and looted by locals. There is no sign of any leakage from the vessel.

Tsavliris Salvage have been appointed by the shipowners to provide salvage assistance to the *Saloos* under the terms of a Lloyd's Open Form of Salvage contract. The SCOPIC clause has been incorporated into the contract and invoked. As soon as SCOPIC has been invoked, the shipowner is required to provide to the salvors a guarantee for USD3 million. This must be provided within 2 working days and failure to do so entitles the salvors to withdraw from the all the provisions of SCOPIC. The guarantee must be lodged in each case regardless of the total amount of special compensation payable.



NEW CASUALTIES

Eleni K ▣

Bulk carrier, Built 1997, 26,412 dwt

Date of Casualty Before 2 May 2014

Voyage Brazil to London, United Kingdom

Cargo Sugar

Type of Casualty Engine breakdown. The vessel was towed into Las Palmas, Gran Canaria, on 2 May 2014 and is undergoing repairs. She is expected to resume her voyage after repairs are completed next week.

Type of Claim Possible General Average declaration



Hanjin Athens ▣

Fully cellular containership, Built 2000, 68,819 dwt

Date of Casualty 6 May 2014 – Late notification

Voyage Pusan, Shanghai, Ningbo, Hong Kong, Yantian, China and Singapore to Port Said, Egypt and Napoli, Livorno and La Spezia, Italy

Cargo General containerised cargo

Type of Casualty Whilst she was south of Suez, the vessel suffered a fire in her No.2 Hold



which was subsequently extinguished under a commercial contract by Svitzer Salvage. Extinguishing water was pumped into the hold and there is likely to be a considerable amount of cargo sacrifice damage. The shipowners have declared General Average and have appointed Rudek & Cie as GA Adjusters although Albatross Adjusters in Cyprus are assisting with the collection of GA security.

Type of Claim Cargo losses and General Average claim

Elytis

Bulk carrier, Built 2007, 8,152 dwt

Date of Casualty 14 May 2014

Voyage Portimao, Portugal to Cadiz, Spain

Cargo Cement

Type of Casualty Engine problems. The

vessel was towed into Cadiz by the tug *SD Salvor*

Type of Claim Possible Salvage and or General Average claim

Voge Fantasy ▣

General cargo with container capacity, Built 1996, 29,538 dwt

Date of Casualty 14 May 2014

Voyage Nika Tera, Ukraine to Belfast, Northern Ireland

Cargo 7,139 m/t of maize

Type of Casualty Smouldering fire in No.

3 cargo hold which was reportedly extinguished using CO₂. Hold temperatures are being monitored and the vessel is now at anchor in Bangor, where surveys are being undertaken.

Type of Claim Cargo damage

P&I Gard

Princess T/Artemis

Princess T - Passenger ro-ro, Built 1986, 4,000 dwt

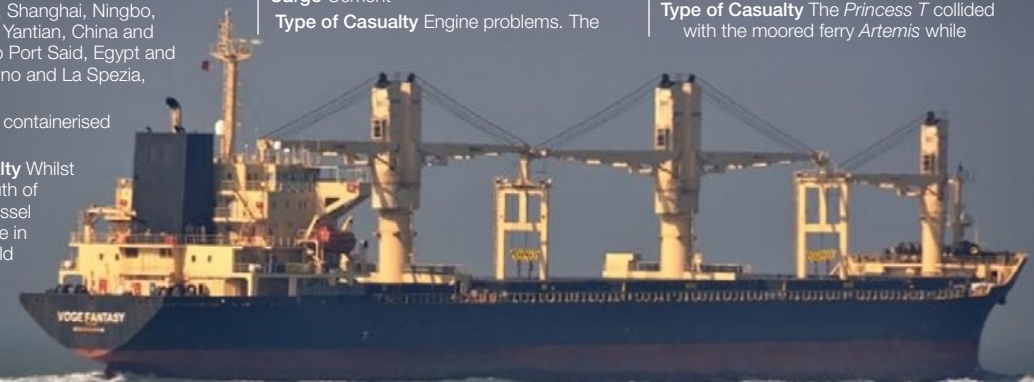
Artemis - Passenger ro-ro, Built 1997, 325 dwt

Date of Casualty 15 May 2014

Voyage In and around Piraeus

Cargo n/a

Type of Casualty The *Princess T* collided with the moored ferry *Artemis* while



Roose + Partners

NEW CASUALTIES - Continued - edition (61)

manoeuvring in Piraeus port.

Type of Claim Collision damage claim
P&I The American Club / Gard

Suat Bey

General cargo with container capacity,
Built 1993, 3,114 dwt

Date of Casualty 15 May 2014

Voyage Abu Kir, Egypt to Nea Moudhania, Greece

Cargo 2200 m/t of fertilizer

Type of Casualty Grounding at Nea Moudhania Port. The vessel was refloated in the afternoon of 16 May 2014.

Type of Claim Possible hull damage and salvage claim



Tao

Yacht, No other details

Date of Casualty 15 May 2014

Voyage Unknown

Cargo n/a

Type of Casualty Water ingress and capsized some 1,200 miles east of Cape Cod. The three crew members abandoned the vessel into a life-raft and were picked up by the vessel *Robero*, one of the many vessels which responded to the request by

the Coast Guard to proceed to the assistance of the crew. Seas were reported to be 10 to 12-foot with 33-knot winds. Click here to see the rescue video.

Type of Claim Total loss claim
See video of this casualty [here](#).

Cheeki Rafiki

Yacht, Built 2006

Date of Casualty 15 May 2014

Voyage Antigua to Southampton, UK
Cargo n/a

Type of Casualty Water ingress with possible capsized 1,000 miles east of Cape Cod. Search and rescue operations were suspended but have since resumed. Both the US and Canadian Coast Guards are involved and the UK Authorities have also sent a C-130 Hercules to assist with the search.

Skansanes

General cargo with container capacity, Built 1985, 1,344 dwt

Date of Casualty 16 May 2014

Voyage Aalesund to Kvernhusvika, Norway

Cargo Sand

Type of Casualty Crashed into rocks at the Storfjord at Skotungneset causing damage to her bulbous bow. The vessel was refloated and docked at Larsnes Port on 19 May 2014.

Type of Claim Hull damage claim

Saga Sapphire

Passenger cruise ship, Built 1981, 5,168 dwt

CASUALTY FOLLOW-UP

Northern Guard – editions 55 & 59 – the vessel remains in Sri Lanka whilst the owners and charterers consider onforwarding arrangements and Adjusters continue to collect GA security.

Galapface 1 – editions 59 & 60 – Mammoet Salvage Americas Inc in association with CPT from Chile have

been contracted by the Ecuador government to remove the vessel after it declared an environmental emergency following reports that contaminated water was leaking from the vessel.

Confid – edition 60 – salvage of the vessel was completed on 14 May by Mammoet Salvage B.V.

Date of Casualty 16 May 2014

Voyage Dover (via Dublin) to Dover, UK
Cargo n/a

Type of Casualty Whilst on a round Britain cruise the vessel suffered a fire in her main switchboard room, disrupting the power supply and leaving the vessel stranded off the Isle of Mull whilst repairs were carried out by the crew.

Type of Claim Possible fire damage and passenger claims



Karmsund

General cargo vessel, Built 1979, 2,020 dwt

Date of Casualty 17 May 2014

Voyage Hirtshals, Denmark to Oslo, Norway

Cargo Unknown

Type of Casualty Ran aground at Langtangen off Kragero, Norway causing damage to her bow and forward ballast tanks. The vessel was refloated with the assistance of tugs *Evis* and *Triset* and has since headed to Odense for repairs.

Type of Claim Hull damage claim

Bulk Trans

General cargo with container capacity, Built 1978, 1,626 dwt

Date of Casualty 17 May 2014

Voyage Rorvik to Laksnes

Cargo Unknown

Type of Casualty Grounding off Vikna. The vessel has since been refloated and following inspection at Bodo, has resumed her voyage.

Type of Claim Possible hull and salvage claim

Sharon/CS1/Navia/Dobra

Sharon - General cargo with container capacity, Built 1999, 5,000 dwt
CS1 - Barge, No other details

Navia - Tug, Built 1998, 358 gt

Dobra - Tug, Built 2003, 189 gt

Date of Casualty 20 May 2014

Voyage In Gijon port

Cargo n/a

Type of Casualty The barge *CS1*, which was under tow of the two tugs, collided with the *Sharon* which was at the quay.

Type of Claim Collision damage claim

Sea Gale

Tender, Built 2013, 65 dwt

Date of Casualty 20 May 2014

Voyage Heligoland, Germany

Cargo n/a

Type of Casualty Fire whilst in the North Sea. Fire-fighters were transferred by helicopter and on board the anti-pollution vessel *Mellum*. The fire was extinguished and the tender was taken in tow by the Dutch tug *Viking* heading to Esbjerg with the *Mellum* escorting.

Type of Claim Fire damage claim

Ulus Prime

General cargo vessel, Built 2004, 3,756 dwt

Date of Casualty 20 May 2014

Voyage origin: Rotterdam, Netherlands to Baku, Azerbaijan

Cargo 2,280 m/t of steel

Type of Casualty Grounding in the Azov Sea. Efforts to refloat the vessel failed due to falling sea levels and the owners are now awaiting an improvement in the weather and an

increase in the tides.

Type of Claim Possible hull damage and salvage claim

Saga Sapphire

Passenger cruise ship, Built 1981, 5,168 dwt

Date of Casualty 20 May 2014

Voyage Dover, UK to Stockholm, Sweden

Cargo n/a

Type of Casualty Power failure whilst on the Elbe. Tugs assisted.

Type of Claim Possible salvage claim



Access all our previous casualty newsletters here 