



### FEATURE CASUALTY

## Nagato Reefer

Reefer, IMO 9227596, Built 2000, 8,105 dwt

**Date of Casualty** 11 November 2014

**Voyage** Southampton UK to Las Palmas, Gran Canaria, Spain

**Cargo** In ballast

**Type of Casualty** Grounding

**Type of Claim** LOF Salvage claim, hull damage claim

Shortly after departing Southampton, the refrigerated cargo ship *Nagato Reefer* ran aground. The vessel had been proceeding in a westerly direction when she grounded on Shingles Bank, which is situated to the west of the Needles near the Isle of Wight, at about 2am on 11 November 2011. The grounding caused a breach in the vessel's hull and water to enter No. 3 cargo hold. No pollution was reported.

The shipowner immediately contracted professional salvors Nippon Salvage jointly with Smit Salvage to assist the vessel under the terms of a Lloyd's Open Form of Salvage Agreement. Smit Salvage dispatched a salvage team from their base in Holland and a local tug *Vortex* also proceeded. However, prior to the tug or salvage team arriving, the *Nagato Reefer* refloated under her own power without any outside intervention. The vessel proceeded to Portland and is now anchored off Weymouth awaiting a survey of the damage.

Where salvors are engaged to provide assistance but ultimately confer no direct benefit to salvaged property, e.g. where a vessel refloats without assistance, it begs the question as to whether the salvors are entitled to claim a salvage reward? Under English law such services fall to be considered as 'engaged services'. Subject to any express provision to the contrary, salvors taking steps to provide assistance when requested to do so, who mobilise tugs or a salvage team and, in doing so, incur expenses, will be entitled to a salvage reward, albeit it is likely to be limited in amount. Salvors acting on speculation, without any request to assist, would not be entitled to claim a reward if they conferred no direct benefit.

### NEW CASUALTIES

#### Tian Xiang 69

General cargo vessel, MMSI 413696770, no other details

**Date of Casualty** 4 November 2014 – Late notification

**Voyage** off Weihai, China

**Cargo** Unknown

**Type of Casualty** Crank case explosion seriously injuring five crew members.

**Type of Claim** Crew claims



#### Nawatrans VI

Self-propelled barge, Built 1921, 1,303 gt

**Date of Casualty** 5 November 2014 – Late notification

**Voyage** Delfzijl, Netherlands to Nordenham, Germany

**Cargo** Lead concentrate

**Type of Casualty** Allision with a steel pillar at the Ems Barrier causing a breach of the vessel's hull and subsequent water ingress into the cargo holds. A transhipment of the cargo is planned.

**Type of Claim** Allision damage claim and possible General Average declaration and cargo damage

#### Pietro Novelli

Ro-ro, IMO 7717339, Built 1979, 900 dwt

**Date of Casualty** 5 November 2014 – Late notification

**Type of Casualty** Allision with the dock at the port of Vulcano causing damage to the vessel and slight

injuries to a passenger and crew member.

**Type of Claim** Hull damage and passenger claims

#### Leonie

General cargo vessel with container capacity, IMO 9331361, Built 2007, 3,638 dwt

**Date of Casualty** 5 November 2014 – Late notification

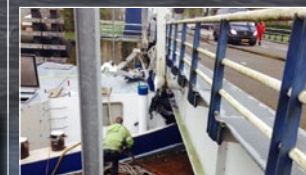
**Voyage** Oulu, Finland to Delfzijl, Netherlands



**Cargo** Unknown

**Type of Casualty** Grounding outside the port of Delfzijl. The vessel was refloated at high tide with tugs *Waterpoort*, *Waterman* and *Waterstroom* in attendance. The vessel shifted to the Royal Niestern Sander shipyard for repairs.

**Type of Claim** Possible hull damage



#### Sympathie

Self-propelled barge, 86m, no other details

**Date of Casualty** 6 November 2014

**Voyage** Delfzijl, Netherlands to Sachsenhagen, Germany  
**Cargo** 1,400 m/t of salt

**Type of Casualty** Allision with the Borg Bridge on the Ems Canal in Groningen. The vessel became stuck and the deck of the bridge was raised by ten centimetres and suffered considerable damage.

**Type of Claim** Allision damage claim



#### CSL Laurentien

Bulk carrier, IMO 7423108, Built 1977, 36,674 dwt

**Date of Casualty** 6 November 2014

**Voyage** Montreal, Canada to Conneaut, U.S.A

**Cargo** Unknown

**Type of Casualty** Allision with the ship arrester at Lock 4 of the St. Lawrence Seaway, Beauharnois, causing temporary closure of the channel.

**Type of Claim** Allision damage claim



#### GSP Saturn

Drill platform, IMO 8767666, Built 1987, 5,235 dwt

**Date of Casualty** 6 November 2014

**Type of Casualty** Damaged during bad weather whilst under tow to Murmansk.

**Type of Claim** Damage claim







## NEW CASUALTIES - Continued - edition (86)

### Transpulp

Ro-ro, IMO 9343261, Built 2006, 13,800 dwt

**Date of Casualty** 6 November 2014

**Voyage** Lubeck, Germany to Gothenburg, Sweden

**Cargo** n/a

**Type of Casualty** Allision with the pier in Travemünde causing severe damage to the pier and some damage to the vessel's bulbous bow. Reports suggest an engine malfunction caused the vessel to veer from its course.

**Type of Claim** Allision damage claim

**P&I** Swedish Club



### Rainbow Quest

Bulk carrier, IMO 9498298, Built 2011, 34,627 dwt

**Date of Casualty** 7 November 2014

**Voyage** New York to Providence, USA

## CASUALTY FOLLOW-UP

**Ocean Drover** – edition 82 – the fire damaged cattle carrier is being towed to Singapore for repairs and is expected to arrive on 25 November 2014.

**Ugo di Carlini** – editions 82 & 83 – has sailed from Buchanan, Liberia with a tug escort and is bound for Cartagena, Spain.

**Rothensee** - editions 84 & 85 – salvors have removed the wreck from the Mittelland Canal, opening the waterway up to the 60 vessels which had been queuing to use the Channel since the collision on 28 October 2014.

**Saga Falcon** – editions 84 & 85 - was finally refloated on 9 November 2014 by the tugs Yagan and Caribe. The vessel was then escorted to Nueva Palmira where she remains.

**Nordnorge** – edition 85 – has been dry-docked for repairs to the damage following the grounding which took place last week as the vessel was departing Skjervøy.

**Myrsini** – edition 85 – has been refloated by Smit Salvage.

**Bahamas Celebration** – edition 85 – Resolve's divers have successfully patched breaches in the hull. Repair works are ongoing.

**Cargo** Unknown

**Type of Casualty** Allision with the Brooklyn Bridge.

**Type of Claim** Allision damage claim  
**P&I** North of England

### Alrek

General cargo vessel with container capacity, IMO 9330953, Built 2006, 4,720 dwt

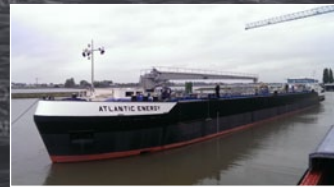
**Date of Casualty** 7 November 2014

**Voyage** Hull, UK to Velsen, Netherlands

**Cargo** General containerised cargo

**Type of Casualty** Loss of containers overboard.

**Type of Claim** Cargo loss



### Atlantic Energy

Bunker tanker, IMO 2335671, Built 2013, 1,560 dwt

**Date of Casualty** 7 November 2014

**Voyage** n/a

**Cargo** Bunkers

**Type of Casualty** Grounding on the shore of the Breediep in the port of Rotterdam. Local port tugs assisted in the refloating efforts and video of the operation can be viewed by clicking [here](#).



### Cosmic 9

Asphalt tanker, IMO 9460306, Built 2007, 3,337 dwt

**Date of Casualty** 8 November 2014

**Voyage** Unknown

**Cargo** 3,000 m<sup>3</sup> of liquid asphalt

**Type of Casualty** Fire whilst at Thuong Ly General oil jetty.

**Type of Claim** Fire damage claim and possible cargo loss



### Atwood Southern Cross

Semi-submersible rig, IMO 7393195, Built 1976, 11,952 gt

**Date of Casualty** 8 November 2014

**Type of Casualty** Loss of anchors during a cyclone off Malta. Tugs were sent to assist.

**Type of Claim** Salvage type claim



### Phuc Xuan 68/Nam Vy 69

*Phuc Xuan 68* - General cargo vessel, IMO 8666056, Built 2008, 1,970 dwt

*Nam Vy 69* - General cargo vessel, IMO 8665753, Built 2008, 2,459 dwt

**Date of Casualty** 9 November 2014

**Voyage** Unknown / to Nha Trang, Vietnam

**Cargo** Unknown

**Type of Casualty** Collision 15m south-east of Nha Trang, Vietnam in the South China Sea leading to the sinking of the *Phuc Xuan 68* and the loss of eight crew members. The *Nam Vy 69* suffered water ingress into its cargo hold.

**Type of Claim** Collision damage and loss of life claims



### Dover Seaways

Passenger ro-ro, IMO 9318345, Built 2006, 6,874 dwt

**Date of Casualty** 9 November 2014

**Voyage** Dover, UK to Dunkirk, France

**Cargo** n/a

**Type of Casualty** Allision with the harbour wall in Dover whilst departing the port. Some passengers were injured.

**Type of Claim** Allision damage and passenger claims

### Rebecca Hammann

General cargo vessel, IMO 9119634, Built 1995, 2,423 dwt

**Date of Casualty** 9 November 2014

**Voyage** Rostock, Germany to Randers, Denmark

**Cargo** Unknown

**Type of Casualty** Grounding on approach to Randers. The vessel was refloated and is now awaiting a dive survey.

**Type of Claim** Possible hull damage claim



Access all our previous casualty newsletters [here](#)

### Heimtun

General cargo vessel, IMO 5298963, Built 1952, 457 dwt

**Date of Casualty** 10 November 2014

**Voyage** Mostraum to Indre Arna, Norway

**Cargo** Sand

**Type of Casualty** Damage caused by a grounding resulting in water ingress and a risk of sinking. Some 150 m<sup>3</sup> of cargo was sacrificed to keep the vessel afloat. The vessel finally docked at Arnävågen in Indre Arna where local fire and rescue services assisted providing additional pumps to control the water levels.

**Type of Claim** Hull damage claim and cargo losses

### Pulpcpa/Stena Flavia

*Pulpcpa* - Ro-ro with container capacity, IMO 9345386, Built 2008, 17,500 dwt

*Stena Flavia* - Passenger ro-ro, IMO 9417919, Built 2008, 7,000 dwt

**Date of Casualty** 11 November 2014

**Voyage** Gdynia, Poland to Travemünde, Germany / Ventpsils, Latvia to Travemünde, Germany

**Cargo** Unknown / n/a

**Type of Casualty** Allision with the Scandianvia Quay in Travemünde leading to considerable damage to the quay, pontoon and port installations. The Ventpsils ferry *Stena Flavia* and a lifeboat were also damaged.

**Type of Claim** Allision damage claim

**P&I** UK Club / Swedish Club

