

FEATURE CASUALTY

Zeus I

Bulk carrier, IMO 9467885, Built 2009, 27,000 dwt

Date of Casualty 25 January 2015

Voyage Montreal, Canada to Spain and Algeria

Cargo 23,800 m/t of wheat

Type of Casualty Loss of power

Type of Claim Possible salvage type claim

Whilst the heavily laden bulk carrier *Zeus 1* was off the Algerian coast with cargo bound for the port of Algiers, she suffered a loss of power during heavy weather and began drifting towards the shore. At the time the engines failed the 169m vessel was some 16 km north of Bordj El Bahri, Algeria. Reports suggest that the bulk carrier had arrived at Algiers ready to discharge her cargo but had been ordered to leave the port due to the approaching storm. After failing to reinstate motive power and with the weather pushing the vessel in the direction of the coast, the Master issued a distress signal requesting immediate assistance. The signal was received by the Algerian National Centre for Surveillance and Rescue Naval Forces (CNOSS) and they immediately dispatched the tug *El Mousanid* to the casualty's location. Two helicopters along with Navy divers and a Navy support vessel were also instructed to proceed.

The *Zeus 1*, which was carrying a cargo of wheat from Montreal and had previously called at Algeciras in Spain, closed the coast rapidly in the deteriorating weather. Waves heights were reported to be 8m. Despite the difficult conditions the Algerian Navy vessel was able to secure a line and tow the vessel away from danger. She has since been taken into the port of Algiers where she remains.

Video of the vessel's predicament can be viewed by clicking [here](#).

NEW CASUALTIES



Seahope II ▣

Bulk carrier, IMO 9486013, Built 2010, 56,894 dwt

Date of Casualty 21 January 2015

Voyage Varna, Bulgaria to Novorossiysk, Russia

Cargo Sulphur

Type of Casualty Smouldering fire in the cargo hold no. 3 whilst loading at Novorossiysk Sea Port.

Type of Claim Cargo damage



Joyful Star ▣

Ro-ro, IMO 7105639, Built 1971, 800 dwt

Date of Casualty 21 January 2015

Type of Casualty Grounding off Leyte in the Philippines. All passengers were rescued.

Type of Claim Possible hull damage and salvage type claim

Reecon Emre

General cargo with container capacity, IMO 9356684, Built 2011, 12,099 dwt

Date of Casualty 21 January 2015

Voyage Mauritius to Reunion

Cargo General cargo

Type of Casualty Engine room fire whilst at Reunion. The fire was

contained but caused resulting in a leak of oil around the vessel.

Type of Claim Fire damage and pollution claims

Selbjornsford/Falkas ▣

Selbjornsford – Passenger ro-ro, IMO 9553335, Built 2010, 1,000

Falkas – General cargo vessel, IMO 7030793, Built 2970, 760 dwt

Date of Casualty 21 January 2015

Voyage N/a/ Bergen to Forus, Norway

Cargo n/a / Sand

Type of Casualty Following an engine blackout, the ro-ro collided with the *Falkas* which was moored at Våge port. The stern of the general cargo vessel was breached and the quay was damaged.

Type of Claim Collision damage claim P&I Gard / Hydor AS



Nalani ▣

Tug, IMO 8973930, Built 1981, 98 gt

Date of Casualty 22 January 2015

Type of Casualty Sinking off West Oahu, Hawaii. All crew were safely rescued. The tug was preparing to tow a ferry barges to South America.

Type of Claim Total loss claim



USNS Sgt. Matej Kocak ▣

Ro-ro with container capacity, IMO 7802706, Built 1983, 24,460 dwt

Date of Casualty 22 January 2015

Voyage Okinawa, Japan to unknown destination

Cargo Military equipment and ammunition

Type of Casualty Grounding on a coral reef off the east coast of Okinawa, Japan. The US Navy and the Japanese authorities are working together to refloat the vessel. 65 personnel have been taken off the vessel.

Type of Claim Hull damage and possible salvage type claim

Detfoss

Fully cellular containership, IMO 9086801, Built 1995, 17,034 dwt

Date of Casualty 22 January 2015

Voyage Frederikstad to Halmstad, Norway

Cargo General containerised cargo

Type of Casualty Fire under deck.

Type of Claim Fire damage claim and possible cargo damage

Wilson Hamburg

General cargo with container capacity, IMO 9088287, Built 1994, 4,170 dwt

Date of Casualty 23 January 2015

Voyage St Malo, France to Szczecin, Poland

Cargo No details

Type of Casualty Allision with the gate of the Northern lock on the

Kiel Canal at Brunsbützel causing severe damage to the gate.

Type of Claim Allision damage claim P&I Swedish Club

CSC Progress ▣

Product tanker, IMO 9344136, Built 2007, 45,791 dwt

Date of Casualty 23 January 2015

Voyage Fujairah, UAE to Colombo and Trincomalee, Sri Lanka

Cargo Unknown product

Type of Casualty Grounding off Trincomalee.

Type of Claim Possible hull damage



Perth I

Bulk carrier, IMO 9583550, Built 2010, 56,781 dwt

Date of Casualty 23 January 2015

Voyage Nikolayev, Ukraine to Istanbul, Turkey

Cargo 53,148 m/t of corn

Type of Casualty Disabled whilst transiting the Dardanelles, Turkey. Coastal safety tugs assisted and towed the vessel to a safe anchorage where repairs are being undertaken.

Type of Claim Salvage fire or claim

Thalassa Hellas ▣

Fully cellular containership, IMO 9665592, Built 2013, 152,344 dwt

Date of Casualty 23 January 2015

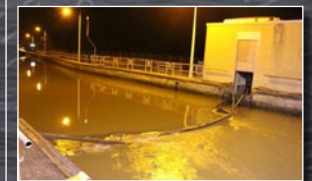
Voyage Malaysia to Piraeus, Greece

Cargo General containerised cargo

Type of Casualty Allision with a pier

whilst berthing in Piraeus causing a 3x2metre breach in the vessel's hull.

Type of Claim Allision damage claim



Bavaria 52 ▣

Self-propelled barge, Built 1972, 1,398 dwt

Date of Casualty 23 January 2015

Voyage to Bamberg, Germany

Cargo 1500 m/t of rape seed

Type of Casualty Allision with the lock gate on the Main-Donau Canal at Erlangen, Germany causing damage to the gate.

Type of Claim Allision damage claim

Fu May

Bulk carrier, IMO 9244831, Built 2002, 76,015 dwt

Date of Casualty 23 January 2015

Voyage Sao Francisco do Sul, Brazil to China

Cargo 65,000 m/t of yellow corn

Type of Casualty Grounding whilst manoeuvring in Santos to load a further 5,000 m/t of yellow corn. The vessel was refloated at high tide using four tugs with a combined bollard pull of 255 tons.



Further casualties overleaf ▶

Roose + Partners

NEW CASUALTIES - Continued - edition 96

The vessel is reported to have suffered some damage with possible water ingress into the cargo holds. She remains anchored of Santos.

Type of Claim Hull and cargo damage claim, possible salvage claim and/or General Average declaration



Giessenstroom

Self-propelled tank barge, No other details

Date of Casualty 24 January 2015

Voyage Unknown

Cargo 2,500 m³ of diesel

Type of Casualty Grounding on the Rhine at Brisfelden, Switzerland. Part of the cargo was lightered to another tanker and traffic was suspended throughout the incident

Type of Claim Possible salvage type claim

Aristote

General cargo vessel, IMO 8203256, Built 1983, 1,821 dwt

Date of Casualty 24 January 2015

Voyage Rotterdam, Netherlands to Dundalk, Ireland

Cargo 1,485 m³ of coal

Type of Casualty Steering failure in heavy

weather off East Goodwin Light. The vessel anchored at South Falls buoy awaiting the assistance of tug *Dutch Pioneer* which then towed her to Hansweert, arriving on 26 January.

Type of Claim Possible General Average declaration



Mentari Pratama

General cargo vessel, IMO 8733433, Built 2005, 5,276 dwt

Date of Casualty 24 January 2015

Voyage Gorontalo to Surabaya, Indonesia

Cargo General containerised cargo

Type of Casualty Fire during welding works at Surabaya. The cargo was reportedly unaffected.

Type of Claim Fire damage claim

Red Eagle

Yacht, No other details

Date of Casualty 24 January 2015

Type of Casualty Capsized in Southampton Water. The Isle of Wight ferry *Aero-Naut* assisted in rescue of the crew and controlled the overturned yacht.

Type of Claim Damage claim

GDF Suez Boston

LNG tanker, IMO 9230062, Built 2003, 77,410 dwt

Date of Casualty 24 January 2015

Voyage Chaguaramas, Trinidad & Tobago to North America

Cargo LNG

Type of Casualty Disabled 110 nm off Martinique following a mechanical breakdown. Tugs proceeded and prevented the vessel from running aground.

Type of Claim Possible salvage type claim

Boudicca

Cruise ship, IMO 7218395, Built 1973, 5,956 dwt

Date of Casualty 25 January 2015

Type of Casualty Engine room fire whilst off Morocco.

Type of Claim Fire damage claim



Geert K

General cargo vessel with container capacity, IMO 9195705, Built 2001, 3,785 dwt

Date of Casualty 26 January 2015

LOF NEWS

Andromeda S

General cargo vessel, IMO 8205216, Built 1983, 3,170 dwt

Date of Casualty 26 January 2015

Voyage Istanbul, Turkey to Tarragona, Spain

Cargo 2,500 m³ of Eitibor-48

Type of Casualty Engine failure 62 nm south east of Tarragona. Tsaviris Salvage were contracted to provide salvage assistance to the vessel on LOF terms. Salvage tug *Marta Mata* was dispatched and took the vessel in tow to Palma de Mallorca Port.

Type of Claim LOF Salvage type claim

Voyage Constantza, Romania to Cartagena, Spain

Cargo No details

Type of Casualty Engine failure whilst transiting the Canakkale Strait. Coastal Safety tugs responded and assisted the vessel to a safe anchorage.

Type of Claim Possible salvage type claim and/or fine



No.201 Melilla

Trawler, IMO 7338559, Built 1966, 2,046 dwt

Date of Casualty 27 January 2015

Type of Casualty Engine failure and grounding in Otago Harbour. The vessel was refloated by tugs.

Type of Claim Possible salvage type claim

Santa Lucia

Reefer, IMO 9194921, Built 1999, 9,500 dwt

Date of Casualty 27 January 2015

Voyage Puerto Limon, Costa Rica to Philadelphia, USA



CASUALTY FOLLOW-UP

Vestas Wind – editions 89, 90, 92 & 93 – the wrecked hull arrived in Genoa, Italy on 26 January on board the containership *Maersk Stockholm*. She will undergo repairs at Persico Marine with the plan that the yacht will rejoin the Volvo Round the World race in June at Lisbon, Portugal.

Norman Atlantic – editions 92 & 94 – Investigators from the Public Prosecutor's Office have reported that the ferry's fire protection system did not work with water inputs in the lower decks failing to open possibly due to poor maintenance and marine growth on the hull. Marine biologists are working with the prosecutors.

Hoegh Osaka – editions 93, 94 & 95 – salvors finally succeeded in reducing the list on the vessel to enable her to be brought into a berth at Southampton port in the evening of 22 January. The LOF salvage contract has been terminated and control of the vessel handed back to the

owners. MAIB inspectors have boarded and commenced their investigation into the cause of the casualty. The vehicles are being discharged and will be subject to full surveys to ascertain the extent of any damage.

Magellan Spirit – editions 93, 94 & 95 – has finally been refloated after 18 days aground following lightering of her cargo. No damage was apparently found to the vessel and she will reload her cargo and then proceed with her voyage.

Citeca – edition 94 – the fire was finally confirmed as extinguished nine days after it was discovered in the plywood cargo.

Coral Opal – edition 95 – the bulker arrived in the port of Amsterdam earlier today for repairs to the severe bow damage from the collision with the *Maersk Etienne* which, as reported last week, is already undergoing repairs in Riga.

to Philadelphia. Coastguard officials engaged with the owners and their salvage representatives to free the vessel. She was refloated in the afternoon and has since dropped anchor at Big Stone Anchorage for a safety inspection before being permitted to proceed to destination.

Type of Claim Possible hull damage, salvage claim and/or General Average declaration

Cargo Fresh produce

Type of Casualty Grounding in Delaware Bay near Miah Maul Shoal whilst inbound

