

FEATURE CASUALTY

Turkish storms

Gülfem Kalkavan – General cargo vessel, IMO 7721873, Built 1979, 3,124 dwt

AK Ceren – Bulk carrier, IMO 8902474, Built 1991, 42,264 dwt

Pasha – General cargo vessel, Built 1971, 1,150 dwt

Gofer B – General cargo vessel with container capacity, IMO 8111283, Built 1983, 4,800 dwt

Melek B – General cargo vessel with container capacity, IMO 8213706, Built 1983, 8,138 dwt

Bodyer – General cargo vessel with container capacity, IMO 8817863, Built 1991, 4,487 dwt

Date of Casualty 1 February 2015

Voyage n/a

Cargo n/a

Type of Casualty Grounding

During the 1 and 2 February, the Turkish coast was battered by a storm which left several vessels aground and damaged. Most of the vessels which were affected by the inclement weather had been laid up or were undergoing or awaiting repairs. The bulk carrier *AK Ceren*, which had been undergoing repairs at Yalova port, broke free of her mooring lines and was forced aground. She was subsequently assisted by Coastal Safety tugs and successfully refloated the following day. *Gülfem Kalkavan*, which was in ballast,

had been laid up offshore near Tuzla's shipyards when her anchors dragged and she became stuck on the rocky coast. Her hull was punctured and water flooded the aft section. Salvage operations are underway.

In the Nemrut Bay Anchorage a number of vessels were affected by the passing storm. The *Melek B*, which has been under arrest at the anchorage since October 2013, grounded and suffered structural failure. The *Bodyer*, which had also been in the anchorage since the middle of 2013 suffered a similar fate and damage. *Gofer B* drifted 3 to 4 miles from her original anchored position and finally ran aground at Piri Reis. Tugs had been unable to assist the vessels due to difficulties with securing lines to the drifting vessels. Both the *Melek B* and the *Gofer B* had a single guard on board each of who were evacuated by helicopter. The *Bodyer* was unmanned.

General cargo vessel *Pasha*, partially sank in a position near Balıkesir'in having been forced aground. The *Pasha* had previously run aground on 12 September 2013 after her cargo shifted whilst en route to Lebanon (see edition 27). The *Pasha* suffered severe structural and has since broken up under the influence of the strong winds and tides.



Gofer B



Pasha



Gülfem Kalkavan

NEW CASUALTIES

Floreana ▣

General cargo vessel with container capacity, IMO 8306474, Built 1984, 1,648 dwt

Date of Casualty 28 January 2015

Voyage San Cristobal to Puerto Ayora, Galapagos Islands

Cargo 1,400 m³ of food cargo, fuel, asphalt and gas cylinders

Type of Casualty Grounding near the Galapagos Islands. The engine room was cracked and flooded. Authorities dispatched tugs and booms were placed around the vessel to protect the environment. Fuel, hydraulic oil and part of the cargo has been removed and the intention is to refloat the vessel and scuttle it away from the Galapagos Marine Reserve.

Type of Claim Hull damage and salvage claim

Yellow River

Fully cellular containership, IMO 9330850, Built 2007, 13,703 dwt

Date of Casualty 29 January 2015

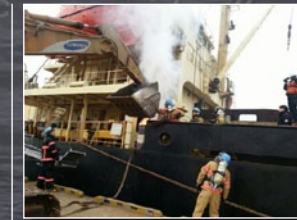
Voyage Valencia to Annaba, Algeria

Cargo General containerised cargo

Type of Casualty Engine room fire whilst at the port of Annaba, Algeria.

Type of Claim Fire damage claim and possible General Average declaration

Further casualties overleaf ▶



Fortune Ocean ▣

General cargo vessel, IMO 9010010, Built 1991, 7,050 dwt

Date of Casualty 29 January 2015

Voyage Hong Kong to Pyeongtaek, South Korea

Cargo Coconut products

Type of Casualty Fire in one of the cargo holds.

Type of Claim Cargo damage



Toskjær ▣

Fishing vessel, No other details

Date of Casualty 29 January 2015

Type of Casualty Sinking during

stormy weather whilst moored at Tommervika. There was some leakage of the vessel's bunkers and the quay was damaged.

Type of Claim Wreck removal type operation, pollution and damage claims



Hjordis ▣

General cargo vessel, IMO 9126235, Built 1996, 6,410 dwt

Date of Casualty 30 January 2015

Voyage Rotterdam, Netherlands to Tornio, Finland

Cargo No details

Type of Casualty Turbocharger explosion while transiting the Kiel Canal. Tugs towed the vessel to Rendsburg.

Type of Claim Possible General average declaration

Berezovneft

Product tanker, IMO 7109336, Built 1971, 1,660 dwt

Date of Casualty 30 January 2015

Voyage to Vladivostok

Cargo In ballast



Roose + Partners

NEW CASUALTIES - Continued - edition 97

Type of Casualty Engine room fire whilst approaching Vladivostok, Russia.

Type of Claim Fire damage claim

Svyatoy Georgiy ▣

Reefer, IMO 8330700, Built 1985, 1,036 dwt

Date of Casualty 30 January 2015

Voyage Petropavlovsk-Kamchatskiy

Cargo Reefer cargo

Type of Casualty Water ingress and listing whilst at the port of Petropavlovsk-Kamchatskiy. Salvors dewatered the vessel.

Type of Claim Salvage type claim



Umm Salal

Fully cellular containership, IMO 9525857, Built 2011, 145,328 dwt

Date of Casualty 31 January 2015

Voyage Antwerp, Belgium to Le Havre, France

Cargo General containerised cargo

Type of Casualty Grounding on the River Scheldt following engine failure. The vessel was refloated with the assistance of five tugs. She then proceeded to the Deurganck dock for inspection. She has since continued with her voyage.

Type of Claim Possible salvage type claim



Rain Maker ▣

Catamaran, Built 2014

Date of Casualty 31 January 2015

Type of Casualty Abandoned and lost off the coast of North Carolina during storms. The vessel is valued at USD2.5million and it is hoped to recover the vessel.

Type of Claim Total loss or salvage claim



Gunesli ▣

Passenger ro-ro, IMO 8012592, Built 1981, 2,022 dwt

Date of Casualty 31 January 2015

Voyage Tekirdag to Bandirma, Turkey

Cargo n/a

Type of Casualty Draggd at anchor during adverse weather. The vessel suffered structural failure.

Type of Claim Hull damage and possible salvage claim

Gokay K/Ismael Mehieddine ▣

Gokay K - General cargo vessel, IMO 8604773, Built 1987, 7,750 dwt

Ismael Mehieddine - General cargo vessel with container capacity, IMO 7616171, Built 1976, 11,897 dwt

Date of Casualty 31 January 2015

Type of Casualty The *Gokay K* was struck

CASUALTY FOLLOW-UP

Hoegh Osaka - editions 93, 94, 95 & 96 - news reports advise the car carrier will be repaired in Southampton. The repair work is expected to extend to cleaning compartments which suffered water ingress and some small structural damages incurred as a result of the movement of cargo and salvage operations.

Red 7 Alliance - edition 95 - completed repairs on 31 January at the Lindenau-Yard in Kiel-Friedrichsort. She has since proceeded to Great Yarmouth.

by the *Ismael Mehieddine* after she dragged at anchor during poor weather.

Type of Claim Collision damage claim

P&I Club Skuld / n/a

Rani

Research vessel, IMO 8748725, built 1978, 151 gt

Date of Casualty 1 February 2014

Voyage to Bergen, Norway

Cargo No details

Type of Casualty Collision with a speed boat near the port of Bergen.

Type of Claim Collision damage claim



Godfjord ▣


Ro-ro, Built 1987, 137 dwt

Date of Casualty 1 February 2015

Type of Casualty Grounding near the ferry quay in Forvik in Vevelstad. The ferry has previously featured in the Newsletter (edition 68) following incidents on 3 and 7 July 2014

Type of Claim Possible hull damage claim and passenger claims

USNS Sgt. Matej Kocak - edition 96 - professional salvors Smit Salvage and Nippon Salvage have jointly carried out salvage operations to the grounded US Naval vessel. Dewatering operations were completed and bunkers were lightered to a bunker tanker on 2 February and the vessel was refloated on 3 February during the high tide. She was able to proceed under her own power into White Beach, Okinawa where she berthed at 17.42pm. Damages to the vessel and coastal area are being assessed.

Access all our previous casualty newsletters here 

Peter Ronna

General cargo with container capacity, IMO 9198628, Built 2002, 4,303 dwt

Date of Casualty 2 February 2015

Voyage Leixoes, Portugal to Peterhead, UK

Cargo No details

Type of Casualty Engine failure off Brest.

Tug *Abeille Bourbon* assisted and towed the vessel into Brest.

Type of Claim General average declaration



Undine 2 ▣

Self-propelled barge, No other details

Date of Casualty 2 February 2015

Voyage Unknown

Cargo 700 m³ of sand

Type of Casualty Allision with a pier near Emmerich, Germany following engine failure. The pier suffered significant damage.

Type of Claim Allision damage claim

Piz Arina

Self-propelled tank barge, Built 1999, dwt

Date of Casualty 2 February 2015

LOF NEWS

Magellan Spirit - editions 93, 94, 95 & 96 - we understand the assistance rendered to the laden tanker was carried out by Smit Salvage on LOF terms.

Other shipping news FACTS AND FIGURES

The fully cellular containership *Maersk McKinney Moller* set a world record last week becoming the first vessel to sail with over 18,000 TEU. The vessel, one of Maersk's Triple E vessels sailed with the record load from the port of Algeciras, Spain to Tanjung Pelepas in Malaysia. She sailed with a record of 18,168 TEU breaking the previous record of 17,603 TEU, set by another Maersk vessel.

Voyage Unknown

Cargo 1,500 m³ of glycol

Type of Casualty Grounding on the Rhine. Lightening of the cargo was carried out and the vessel refloated in the afternoon of 3 February. She was towed to a berth for inspection.

Type of Claim Possible hull damage and salvage type claim

Tatamailau ▣

Passenger/cruise vessel, IMO 8915639, Built 1990, 1,399 dwt

Date of Casualty 2 February 2015

Type of Casualty Grounding near Port Poumako, Papua, Indonesia. The vessel had 300 passengers on board.

Type of Claim Possible hull damage and salvage claim

